



MetroGIS Coordinating Committee

Wednesday, January 22, 2025





MetroGIS Coordinating Committee

Wednesday, January 22, 2025

- 1) **Call to Order**
- 2) **Approve Today's Meeting Agenda**
- 3) **Minutes from last meeting on November 14, 2024
(Minutes are available at metrogis.org)**

Tanya: Review action items from last meeting

4) **Administrative Item**

Request to change the November in-person meeting date. November 19 is GIS Day 2025.

Suggestions: Wed November 12, Thursday Nov 13, Tuesday Nov 18, Thursday Nov 20





MetroGIS Coordinating Committee

Wednesday, January 22, 2025

Welcome new members

- **Aaron Goemann**, Mississippi Watershed Management Organization – Watershed Seat
- **Mirae Guenther**, Mississippi Watershed Management Organization – *alternate*



Agenda Item 5

MetroGIS Survey Results

Survey distributed to Coordinating Committee members and alternates after last meeting to firm up our understanding of what the primary needs are that the collaborative can meet.

MetroGIS role has evolved in the past 15 years:

- Maintenance of the regional datasets
- Develop standards as needed
- Projects of shared/interjurisdictional need

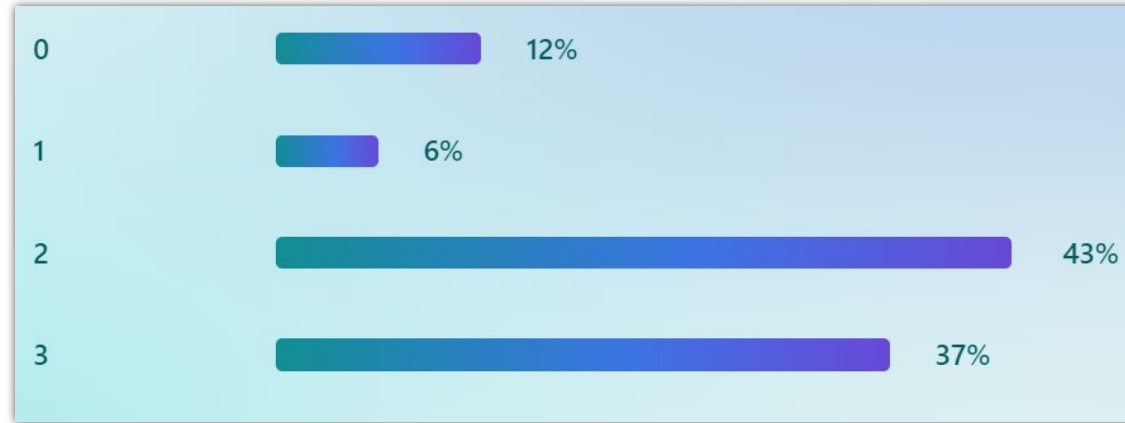
16 Responses ~ 47%



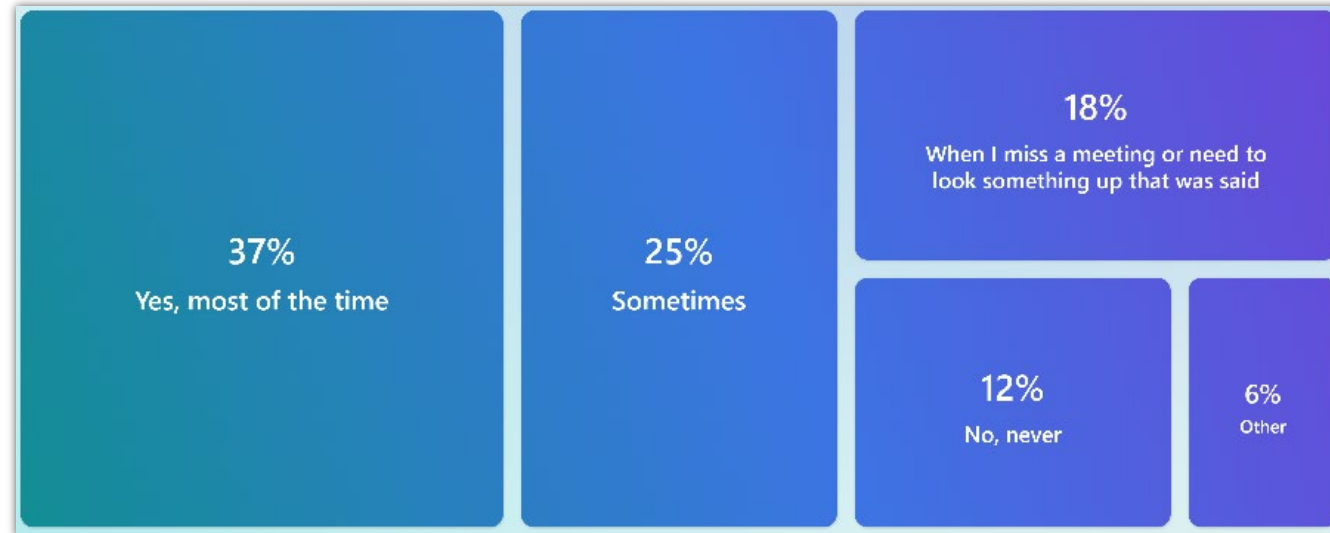
Agenda Item 5

MetroGIS Survey Results - Participation

How many MetroGIS Coordinating Committee Meetings did you attend in 2024?

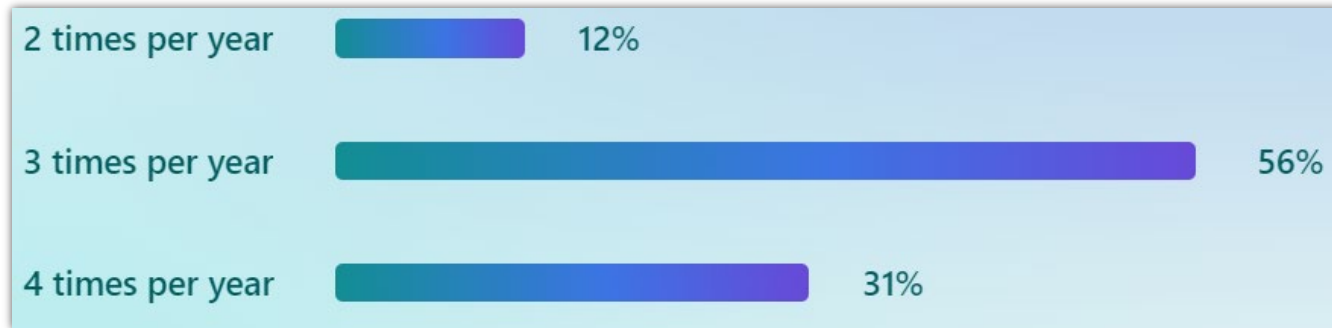


Do you review the minutes or presentation materials after the meeting?

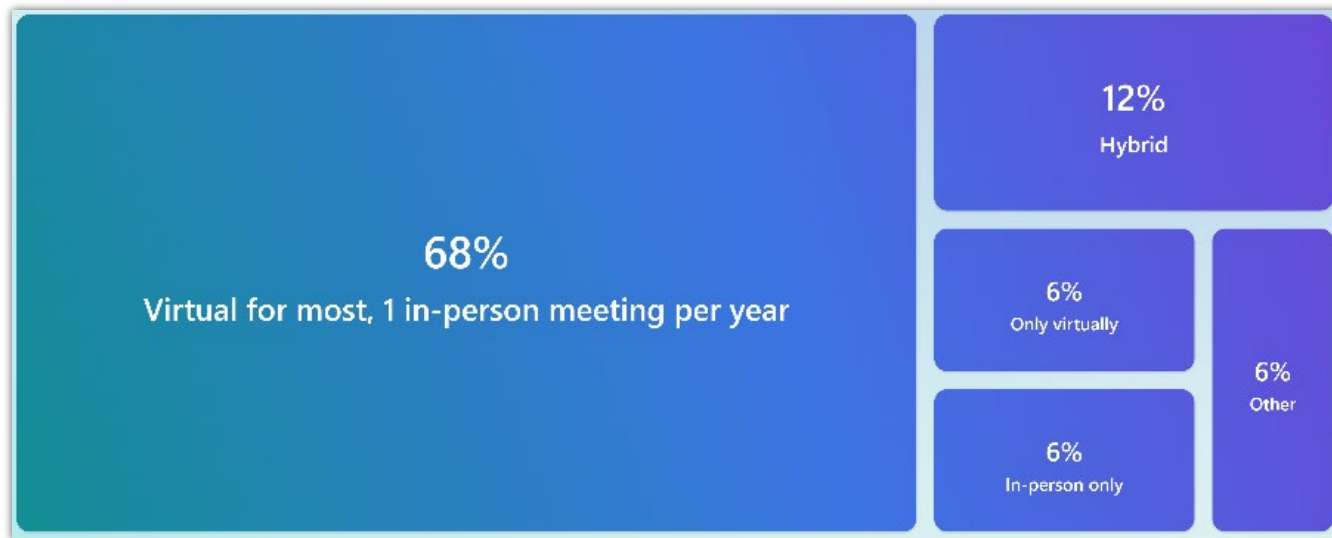


MetroGIS Survey Results - Participation

Meeting Frequency. I prefer to meet ...



Meeting Style. I prefer meeting ...



Agenda Item 5

MetroGIS Survey Results - Participation

What do you like about the MetroGIS meetings? What do you find most useful?

- Collaboration with agencies I don't normally interact with.
- To hear about what is going on across the metro.
- The opportunity to get involved with projects that benefit my organization.
- Updates on major GIS initiatives
- Networking with other GIS people.
- Connect with the other GIS professionals
- Connections with fellow GIS experts from a variety of professional backgrounds.
- Opportunity to discuss topics with a different group of GIS professionals.
- Understanding of regional dataset work, updates.
- Lidar project updates.
- Updates from individual committee members.
- Learning about what's going on across the metro.
- Networking with folks across career stages, organizations, and work areas.
- Getting a chance to think more deeply about GIS challenges and opportunities.
- To stay in touch with regional projects.
- Connect with GIS professionals from many sectors.
- Being able to associate names with specific agencies and organizations.
- Hearing what items are of most concern to organizations in other parts of the public sector.
- Hearing and participating in shared objectives.
- Hearing what everyone is working on and what projects are presented.
- The call to keep the Metro datasets for Roads, address points, and parcels going. I found it useful to be reminded not to take this stuff for granted.
- Sharing ideas
- Excited to see what it's about.



Agenda Item 5

MetroGIS Survey Results - Participation

What do you like about the MetroGIS meetings? What do you find most useful?

Three Themes

- Networking and Connecting with other GIS Professionals
- Updates, Learning or Hearing about
 - regional and state GIS dataset work;
 - regional and state GIS projects;
 - what various organizations across the metro are working on;
 - shared objectives.
- *Collaborating, Participating or Discussing with* a group of GIS professionals and organizations on
 - shared objectives;
 - regional projects;
 - current topics;
 - challenges;
 - opportunities.



Agenda Item 5

MetroGIS Survey Results - Participation

Are there any topics you would like presented or do you have anything you would like to present in an upcoming meeting?

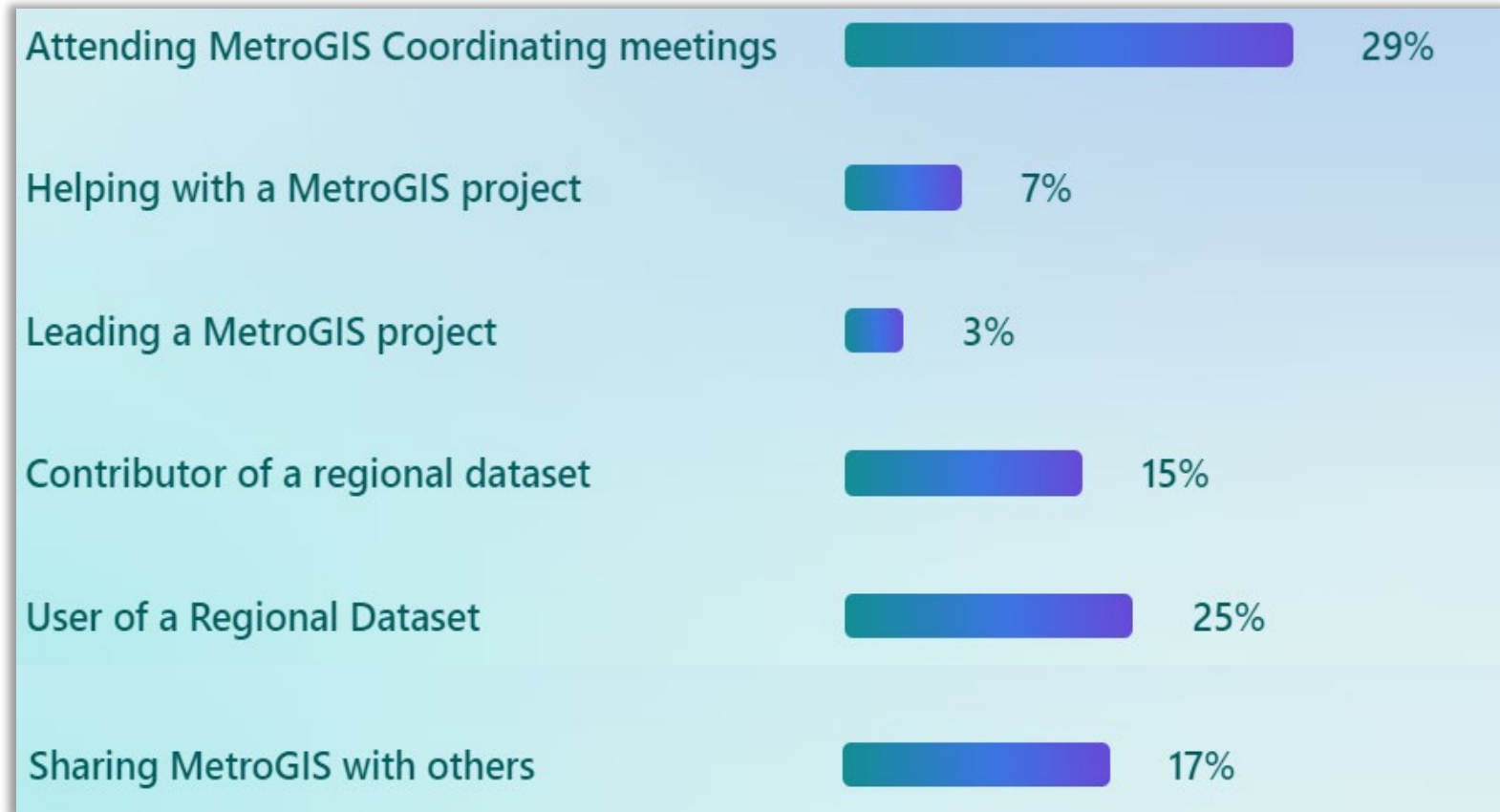
- I would like to **hear more about the various sectors people represent.** *Successes and challenges, interesting work.*
- **Creating and maintaining high quality authoritative data of all kinds.**
- **Asset Management**
- I would like to see a presentation on **data flow from counties to MetroGIS, to the MESB.** And see a presentation on **the development of written agreements to ensure this process is maintained after key people retire.**
- I'd love to hear **more from the organizations that use the platform (and the public) to learn how it could potentially be improved upon!**
- **Data visibility and GIS as organizational systems of record.**
- *Use cases on* **point cloud-generated 3D buildings and AI-assisted GIS processes.**
- I appreciate being included in these meetings and would be *happy to collaborate on any presentation that would involve state-wide or agency-wide efforts that impact MetroGIS.*



Agenda Item 5

MetroGIS Survey Results - Participation

How are you participating in MetroGIS?



MetroGIS Survey Results - Organization

How well does the MetroGIS collaborative meet the needs of your organization?



How would you rate your overall satisfaction with the MetroGIS Collaborative?



Agenda Item 5

MetroGIS Survey Results - Organization

Do you have ideas/needs for expanding/changing the functions of MetroGIS?

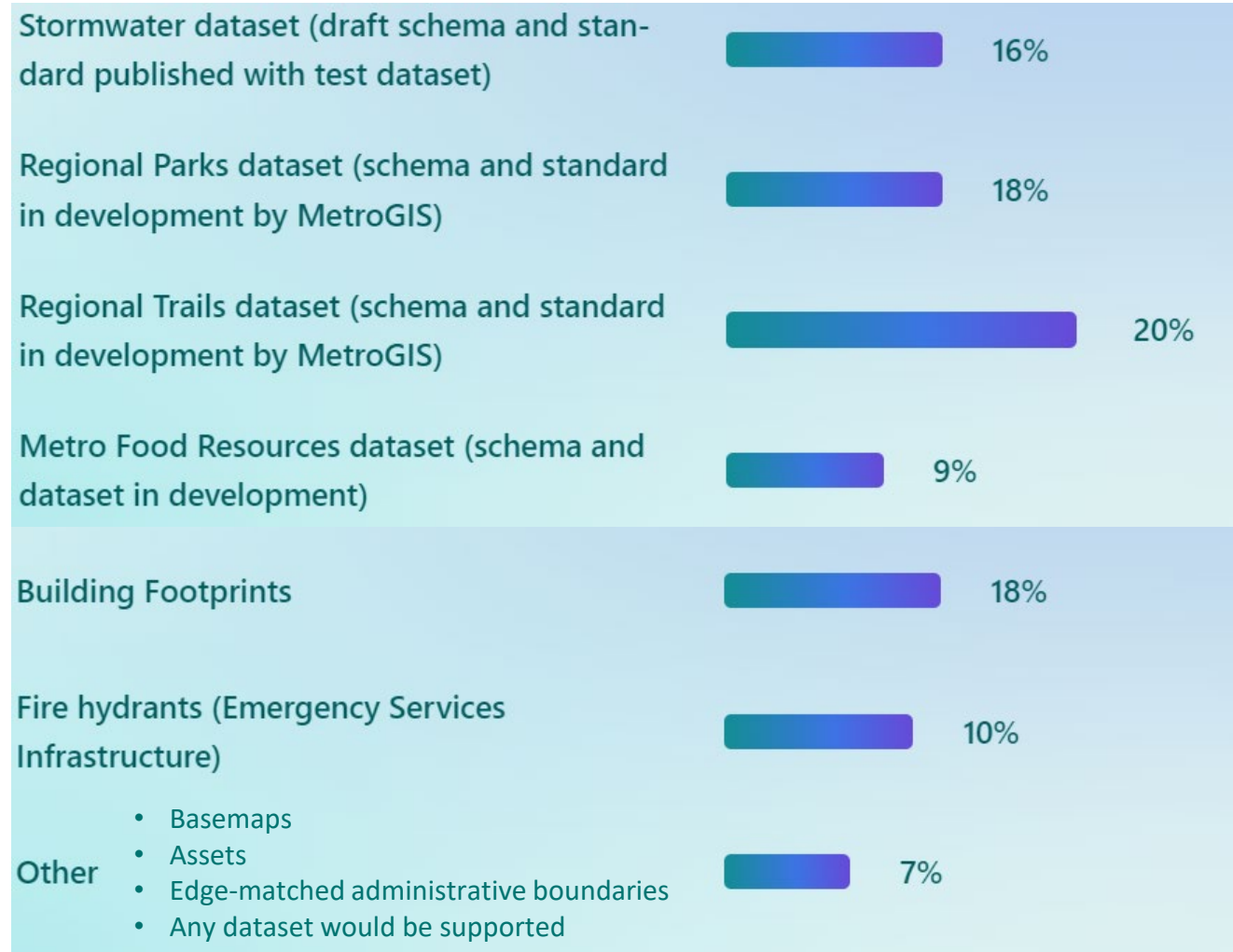
- The exhausting work of **convincing management of our utility and viability**. Management and leadership at agencies simply does not understand GIS technology and makes incorrect assumptions about how our work is conducted.
- Organizations: **Get cities more involved**; at least one per county if not two (one large and one small).
- Subject: **Asset management**, ultimately 17 different types of infrastructure that our public agencies manage as identified in past asset management surveys and reports.
- I would like to see an off the shelf **library/toolkit of written agreements between Counties and cities for providing address information**.
- MetroGIS currently functions as a conduit/catalyst/test bed for large-scale statewide GIS projects. We could use **an ambassador to advocate GIS to policy makers now Commissioner Reinhardt retired**.
- Not yet!



Agenda Item 5

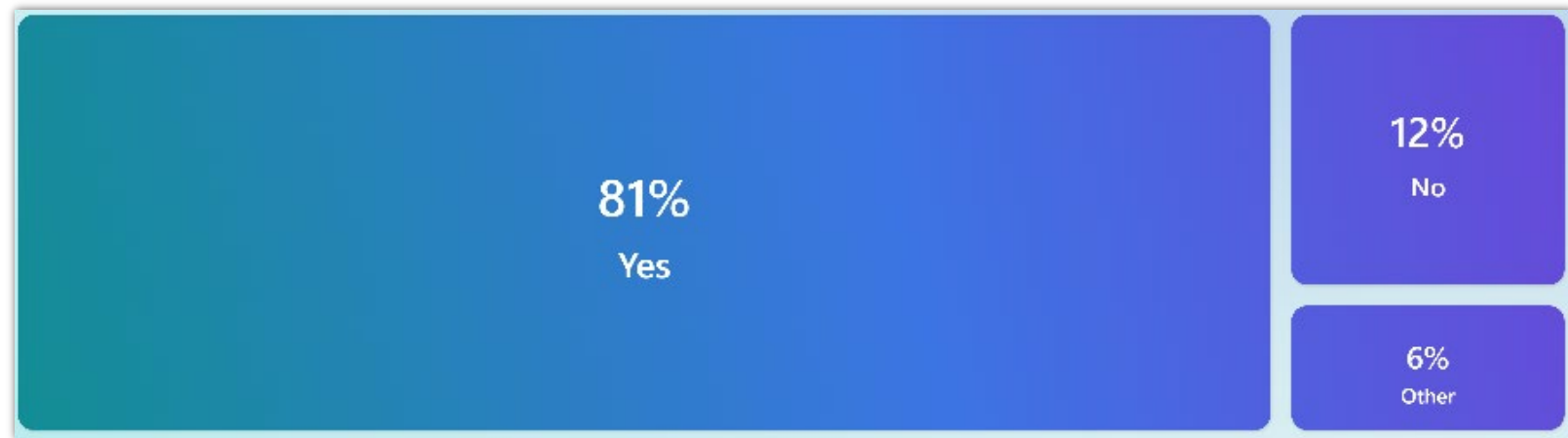
MetroGIS Survey Results - Organization

In addition to the 3 regional datasets, what other regional core datasets are important for your organization?



MetroGIS Survey Results - Organization

Does your organization have people whose main job is the creation and maintenance of GIS data for your organization's needs?



This is a consistent challenge. Leadership is not understanding the resources we need to do this.



Agenda Item 5

MetroGIS Survey Results - Organization

Please expand on the maintenance plan for your organization's major datasets.

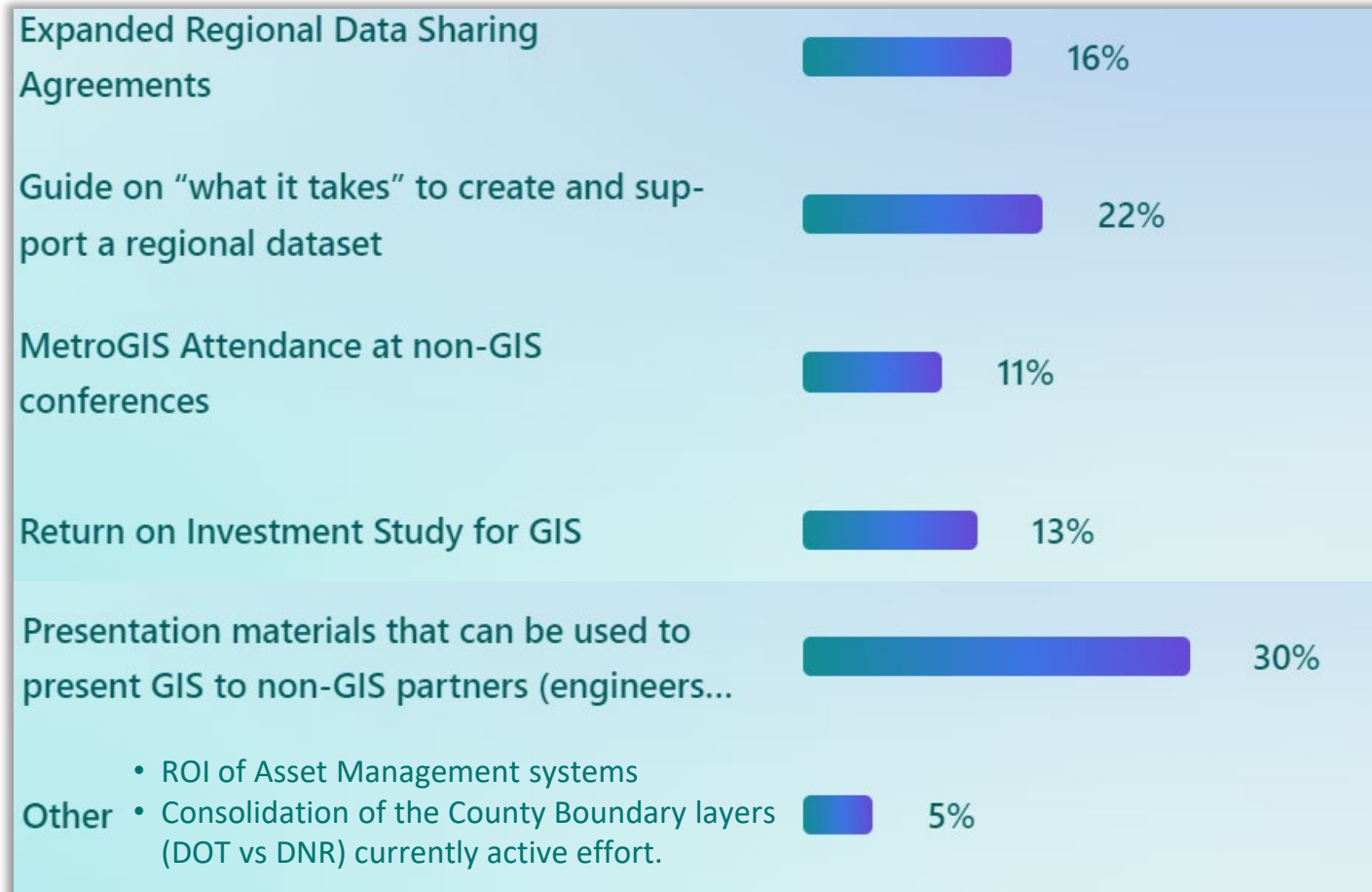
What do you do to keep them up to date?

- The GIS Coordinator performs large-scale data editing and schema updates. The Utilities staff perform day-to-day updates on sewer and water data. Our Streets department handles day-to-day edits of trail and crosswalk datasets and streetlights.
- We have staff dedicated to the maintenance of parcels, centerlines and address points. Parks and Trails maintenance has been accomplished with intern work once a year. Food Resources data maintenance will be done by Public Health staff.
- Organization is currently hiring staff to maintain major datasets. Had previously relied upon contractors.
- Built into existing processes. Shared position with our cities contributes.
- That applies to each agency and each type of infrastructure. MetroGIS is a vehicle to share that information.
- MnDOT - and MNIT, by extension - have numerous functional units and established business processes dedicated to the maintenance of our agency's major datasets. These practices can vary widely depending on the scope and utilization of these specific datasets.
- We have dedicated staff in the GIS Section and in divisions (data stewards) - we also work closely with other agencies including MetroGIS to maintain the Geospatial Commons objectives.
- We have staff that maintain some of our data. We have some data that needs additional maintenance. We also use seasonal staff to assist in updating data.
- For address points and road centerlines we have a dedicated person who continuously updates and improves the data. There is a separate group in the Assessor's office for maintaining the parcels.
- All major datasets are maintained by the Anoka County GIS Dept. This is done mostly by our GIS technician but is shared amongst all staff when necessary.
- I'm not the best person to comment on this. Hennepin County does have a whole department dedicated to updating these datasets, they have extensive protocol and have been working with us to switch to Arc Pro (but I am not in this department).
- LOGIS GIS creates and maintains datasets for other internal business lines such as Fiber, Permitting and Public Safety. We have dedicated staff to help maintain fiber assets and integrate GIS with other business databases to enable location-based decisions.
- *No:* Whoever has the most experience with GIS takes on the maintenance of GIS tools and datasets. Maintenance approach is dependent on dataset, but across the organization we are working to clean up our shared storage space and better organize that space for future work.
- *No:* We're on the consumer side



MetroGIS Survey Results - Organization

What other regional projects or efforts would benefit your organization?



Agenda Item 5

MetroGIS Survey Results - Organization

Would you have time to lead or participate in any current/new project/effort?

Yes

- I want to **participate in** regional dataset creation, particularly: **Stormwater and trails**
- Yes, **participate**, parks dataset.
- Time to **ID candidates** who could **lead or participate**.
- Yes, I would **participate in** anything related to **public safety**.
- Yes, I'm happy to **participate in or lead** the **stormwater dataset project**.
- I will serve as the chair to the MGAC Outreach Committee in 2025. Committee members from Legislative Coordinating Commission and Ramsey County will work to inform public policy makers and stakeholders via geospatial story-telling. Our Success Story Workgroup can **amplify regional win-wins that started at MetroGIS**.

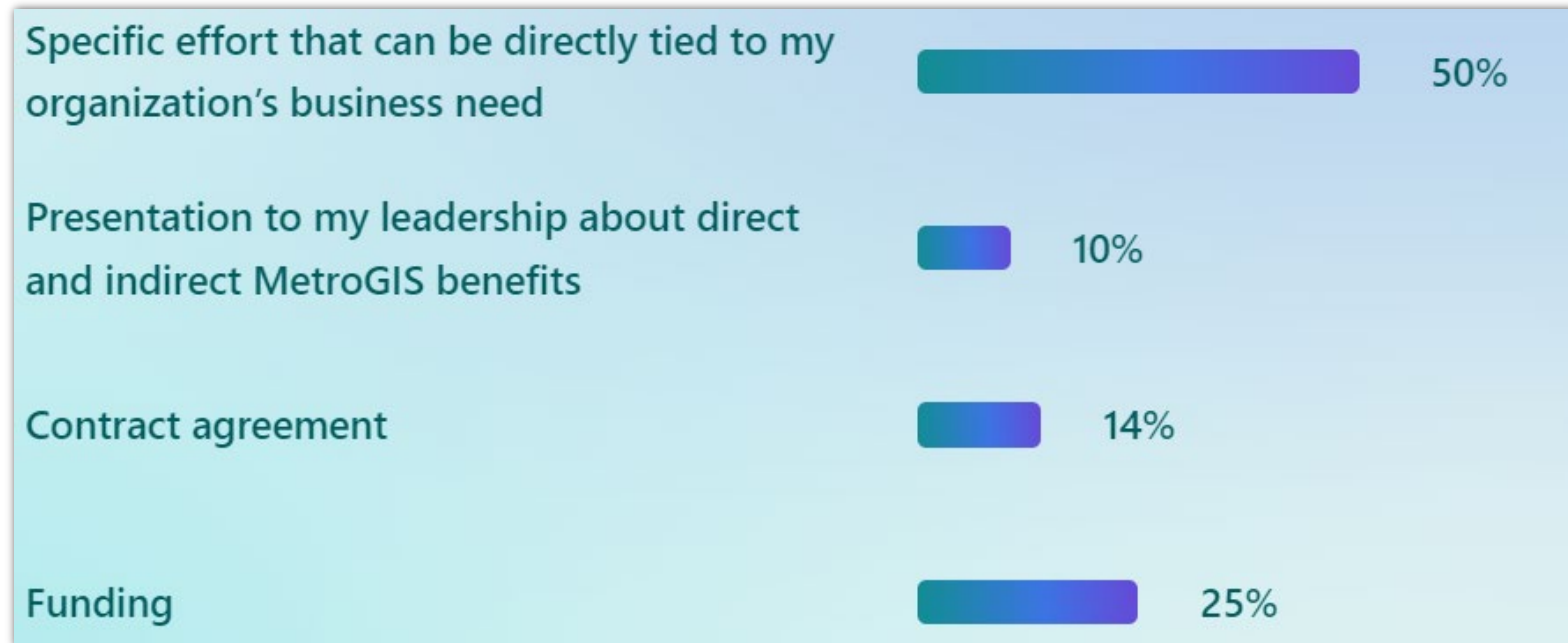
No or Not currently

- I am already pretty involved with *limited time to take on more*.
- No, but would be *happy to support MetroGIS efforts within my role at MNIT DNR*
- Not at the moment, but I could see *value in introducing some of the broader Natural Systems data work I'm doing with several partners across Hennepin* in the future.
- No, at least *not until the positions I'm still backfilling have replacement staff* hired.
- No. Workload has meant that it was difficult to attend the meetings last year, *no additional bandwidth for new projects* unfortunately.
- I do not honestly know how long I will be working in the GIS field in the mid-term future.
- 2 - Not currently



MetroGIS Survey Results - Organization

What would help enable you to dedicate more time to MetroGIS?



Agenda Item 5

MetroGIS Survey Results - Organization

What additional comments, suggestions or questions do you have for the MetroGIS Collaborative?

- Happy to help where I can.
- Every organization has infrastructure. Infrastructure is expensive, has a finite life, is largely buried or hiding in plain sight. AM helps engineers improve infrastructure management. AM uses GIS and AM systems; generally, one GIS system and as many as 100 AM systems to manage 17 infrastructure types around the state.
- I would probably stay away from underground utility mapping.
- Are there introductory materials I can share with colleagues who are interested in being involved?
- Looking forward to getting to know the group.



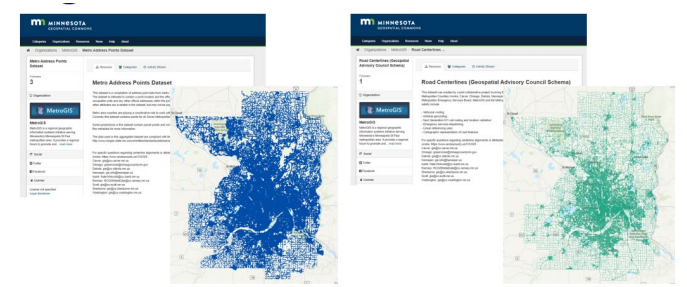
Agenda Item 6

Work Plan Projects Update

- #1 – Regional Data Provisioning** (Maas)
- #2 – Metro Park and Trail Data Standard** (Maas)
- #3 – New Regional Data Sharing Agreements** (Mayer)
- #4 – MetroGIS Operational Guidelines + Procedures**
(Brandt - *Needs volunteer*)
- #5 – External Platform Publishing** (Brandt, Metro GIS Managers)
- #6 – Metro Regional Data Viewer** (Maas)
- #7 - Metro Food Resources Web Map and Dataset** (Maas)



#1 – Regional Data Provisioning



This is the central function of the MetroGIS collaborative

- Ensuring the continuity of the Metro County/Metropolitan Council/MESB working relationships
- Error Reporting, Troubleshooting, Communication, Etc.
- Updated agreement language in 2025-26 (Item #3)
- Biggest upgrade in 2025:
Adding CARTOCLASS attribute to Road Centerlines
- Other needs?



#2 – Metro Park/Trail Data Standard

Project in progress:

Virtual Session on December 18th with good turnout to review and refine the initial rough draft standard

Developing a draft schema to meet multiple needs

May need to pull back and more fully document the needs to be met and/or develop a limited number of shared attributes

Challenges:

Municipal needs vs. County needs vs. Regional needs vs. State needs

Every agency has different methods of managing their data

Every agency has different priorities/purposes for their data



Metro Trail Data Standard Attribute Example (DRAFT FOR REVIEW)



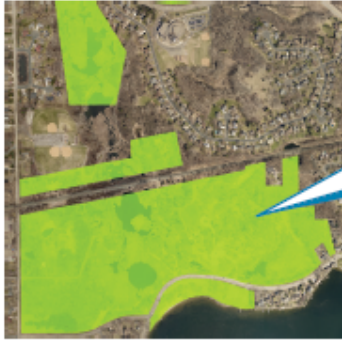
Example of a map flyout if all/most of the attributes were populated.

The attributes in **blue** are those specifically requested by the Metropolitan Council

GUID	77058B59-CF6b-4477-AB24-F99788DE4C80
Unique ID	10-053-7824277367
Trail Name	Medicine Trail
Regional Trail Name	None
Secondary Trail Name	< insert secondary name if applicable >
Agency Manager	Three Rivers Park District
O&M Funding Agency	Three Rivers Park District
Contract Agency Partner	Three Rivers Park District
Trail Type	Primary
Trail Administrative Agency	District-Regional
Trail Status	Open All Year
Associated Park	Clifton E. French Regional Park
Point of Contact	763-694-7750
Year Built	Unknown
Search Corridor	No
Length	1687.27
Width	8.5
Surface Material	Bare Earth
Directionality	Two Way No Restrictions
Segment On Roadway	No
Associated Roadway	Not Applicable
Striping	No
Grade	2.61
Elevation	853.44
Flooding	No
Open To Public	Yes
Multiuse Trail	Multiuse
Foot Traffic	Yes
ADA Accessable	No
Interpretive Trail	No
Cycling	Yes
E-Bikes Permitted	No
Dog walking	Yes
Horseback riding	No
Motorized use	No
Snowshoeing	Yes
X-Country skiing	Yes
Grooming	Groomed for skate and classic x-country skiing
Snowmobile	No
Grant In Aid	Not Applicable
Snow Only	No
Difficulty Rating	Easy
Emergency Vehicle Access	Yes
Use Count	16070
Use Count Year	2023
Plow Route	No
Mow Route	No
Associated As-Built Drawing	< name/ID of associated as-built drawing >
Associated Maintenance Agreement	< name/ID of associated maintenance agreement >
Condition Score	Good
Condition Date	8/22/2009



Metro Park Data Standard Attribute Example (DRAFT FOR REVIEW)



Example of a map flyout if all/most of the attributes were populated.

The attributes in blue are those specifically requested by the Metropolitan Council

GUID	8829CC61-DE7c-5588-BC35-G88677EF5D91
Unique ID	3-123-7153782230
Park Name	Tony Schmidt Regional Park
Regional Unit Name	Tony Schmidt Regional Park
Abbreviated Name	Tony Schmidt
Agency Manager	Ramsey County
O&M Funding Agency	Ramsey County
Contract Agency Partner	Ramsey County
Category	Regional Park
Site Control	Owned
Public	Open to Public
Implementation Phase	< value >
Park administrative type	County-Regional
Park status	Open
Hours of Operation	Monday-Sunday, 5 am - 11 pm
Point of Contact	651-266-0300
URL	https://www.ramseycounty.us/residents/parks-recreation...
Address	3500 Lake Johanna Blvd, Arden Hills, MN 55112
Open To Public	Open to Public
Acres	133.31
Boundary	Boundary created by snapping to parcel data
Public Water Inventory	0.1
Created By	J. Smith
Date Created	8/22/2009

JOIN

Amenities/Uses Look Up Table

Unique ID	3-123-7153782230
Park Name	Tony Schmidt Regional Park
Site has ADA Accessibility	Yes
Restrooms Available	Yes
Potable Water Available	Yes
Picnic Area Available	Yes
Playground Area Available	Yes
Outdoor Fitness Amenities Available	No
Benches Available	Yes
BBQ Grills Available	Yes
Fire Pits Available	Yes
Baseball Field Available	No
Basketball Court Available	No
Pickleball Court Available	No
Tennis Court Available	No
Volleyball Court Available	No
Soccer Field Available	No
Water Access Available	Yes
Swimming Beach Available	Yes
Boat Ramp Available	Yes
Skate Park Available	No
Pavilion Available	No
Walking Paths Trails	Yes
X-County Ski Trail	Yes
Biking Trails	Yes
Dogs Allowed	Yes
Ice Rink	No
Warming House	No

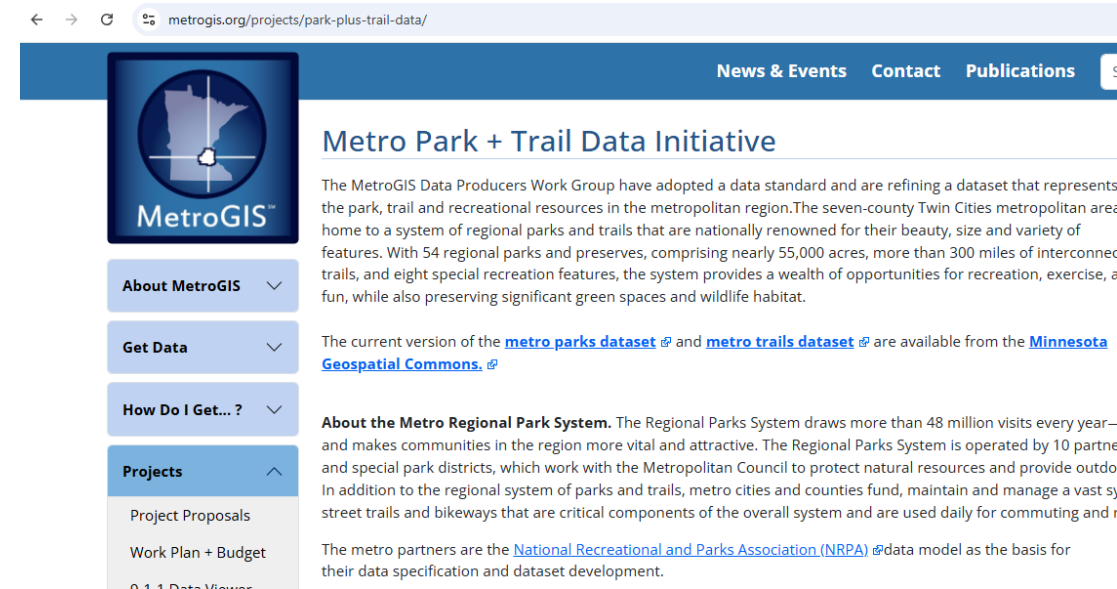


#2 – Metro Park/Trail Data Standard

Next Steps:

- **Revise existing draft**
- **Complete and publish the 'needs' documentation**
- **Virtual work session in March 2025**
- **Sample Area/Draft dataset for testing in March 2025**

Update Parks/Trails info on
metrogis.org (out of date) >>



The screenshot shows a web browser window with the URL metrogis.org/projects/park-plus-trail-data/. The page features a blue header with navigation links for "News & Events", "Contact", and "Publications". A sidebar on the left contains a "MetroGIS" logo and a menu with items: "About MetroGIS", "Get Data", "How Do I Get...?", "Projects", "Project Proposals", "Work Plan + Budget", and "0.1.1 Data Viewer". The main content area is titled "Metro Park + Trail Data Initiative" and contains text about the data standard and dataset refinement. It mentions that the current version of the [metro parks dataset](#) and [metro trails dataset](#) are available from the [Minnesota Geospatial Commons](#). A section titled "About the Metro Regional Park System" describes the system's scale and management. The page concludes by stating that metro partners are the [National Recreational and Parks Association \(NRPA\)](#) and that their data model serves as the basis for data specification and dataset development.



#3 – New Regional Sharing Agreements

- Builds on existing documents and practices
- Ensures continuity of the data and workflows
- Initial discussion with County GIS Managers group (Feb)
- MetroGIS Executive Team to work on revised language
- Work with County GIS Managers group to refine/tidy
- Present to MetroGIS Coord. Com. at June 2025 meeting
- Work through legal/contract process at County/Council
- Implement for 2026 onward



#4 – Revamp MetroGIS Operational Guidelines + Procedures

Existing OG+P language dates from 2016

Needs a full-on refresh

Geoff will take a look at it in March/April revamp for June Agenda Item

Goals for revamping the OG+P:

- Expanded membership potential
- Ease path to membership and participation
- Align OG+P with current actions (operations/maintenance)
- Emphasis on membership's ownership of the collaborative



#5 – External Platform Publishing

Update from the MN Geospatial Advisory Council
Contributing to Nationwide & Commercial Data Assets Committee (CANDo)

The CANDo team met with Google and reviewed the Maps Content Partner Program on Jan 14

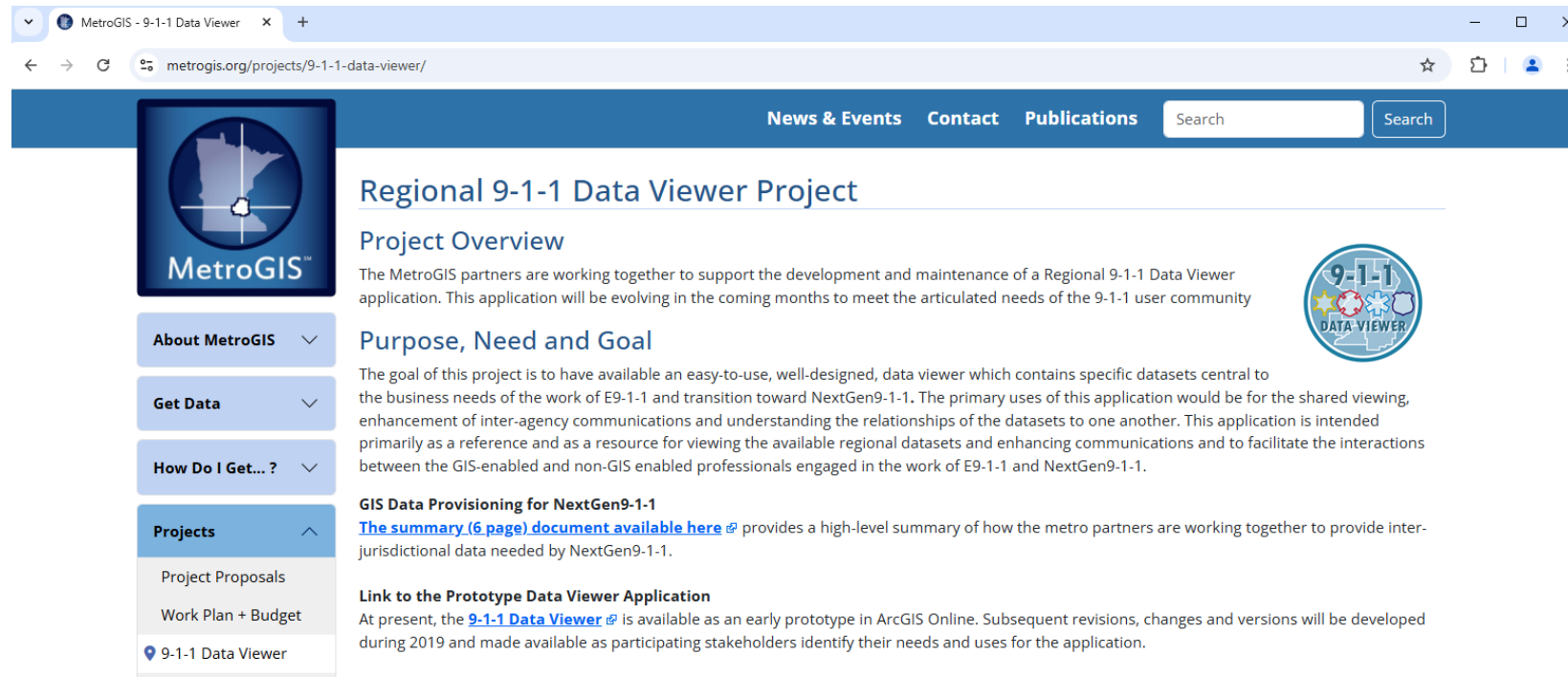
- <https://contentpartners.maps.google.com/>
- Data sharing can be done at an aggregated level
- Open-source data feeds (no credentials) can be pulled by Google
- Google pulls NAD quarterly
- For more immediate updates to the road features in Google, there is an edit tool for Maps Content Partners.



#6 – Regional Data Viewer

Initial purpose: Non-GIS 9-1-1 staff could view the most current road centerline, service boundaries and address points.

Needs, updates, uses, expansions for the Viewer?



MetroGIS - 9-1-1 Data Viewer

metrogis.org/projects/9-1-1-data-viewer/

News & Events Contact Publications Search

Regional 9-1-1 Data Viewer Project

Project Overview

The MetroGIS partners are working together to support the development and maintenance of a Regional 9-1-1 Data Viewer application. This application will be evolving in the coming months to meet the articulated needs of the 9-1-1 user community

Purpose, Need and Goal

The goal of this project is to have available an easy-to-use, well-designed, data viewer which contains specific datasets central to the business needs of the work of E9-1-1 and transition toward NextGen9-1-1. The primary uses of this application would be for the shared viewing, enhancement of inter-agency communications and understanding the relationships of the datasets to one another. This application is intended primarily as a reference and as a resource for viewing the available regional datasets and enhancing communications and to facilitate the interactions between the GIS-enabled and non-GIS enabled professionals engaged in the work of E9-1-1 and NextGen9-1-1.

GIS Data Provisioning for NextGen9-1-1

[The summary \(6 page\) document available here](#) provides a high-level summary of how the metro partners are working together to provide inter-jurisdictional data needed by NextGen9-1-1.

Link to the Prototype Data Viewer Application

At present, the [9-1-1 Data Viewer](#) is available as an early prototype in ArcGIS Online. Subsequent revisions, changes and versions will be developed during 2019 and made available as participating stakeholders identify their needs and uses for the application.



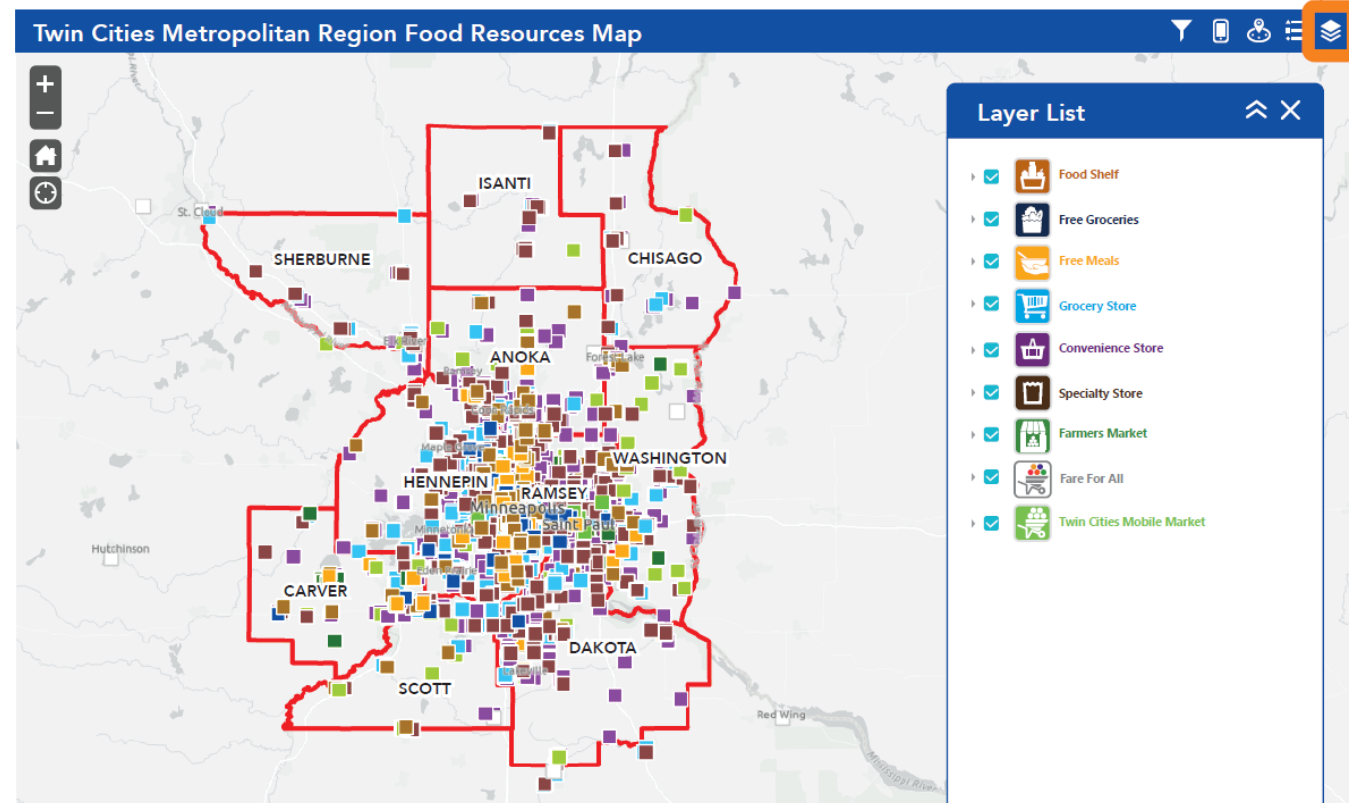
#7 – Metro Food Resources Map

Data assembled (Dec-Jan) from participating counties
First metro wide prototype to be launched in late January

Calendar 2025 will be the *'test it in the public sphere'* phase of the project.

Refine its content and functions based on community input.

“Data rich & user friendly”



#7 – Metro Food Resources Map



Food Shelf



Free Groceries



Free Meals



Grocery Store



Convenience Store



Specialty Store



Farmers Market



Fare For All



Twin Cities Mobile Market

“Data rich & user friendly”

- *Locations and details*
- *Hours of operation*
- *SNAP, WIC, and other program participation*
- *URLs where available*
- *Other data as needed/relevant to food resources*

Resource for *public users* and for *nutrition staff/public health staff* to assist residents.

Dataset to be downloadable as well
(excellent for ‘food desert’ research work)





Agenda Item 7: Lightning Round





2025 Coordinating Committee Meeting Calendar

June 4, 2025

(Virtual)

November 12, 2025

(In Person)

(new November date)





Agenda Item 8: Adjourn

