

MINNEHAHA CREEK

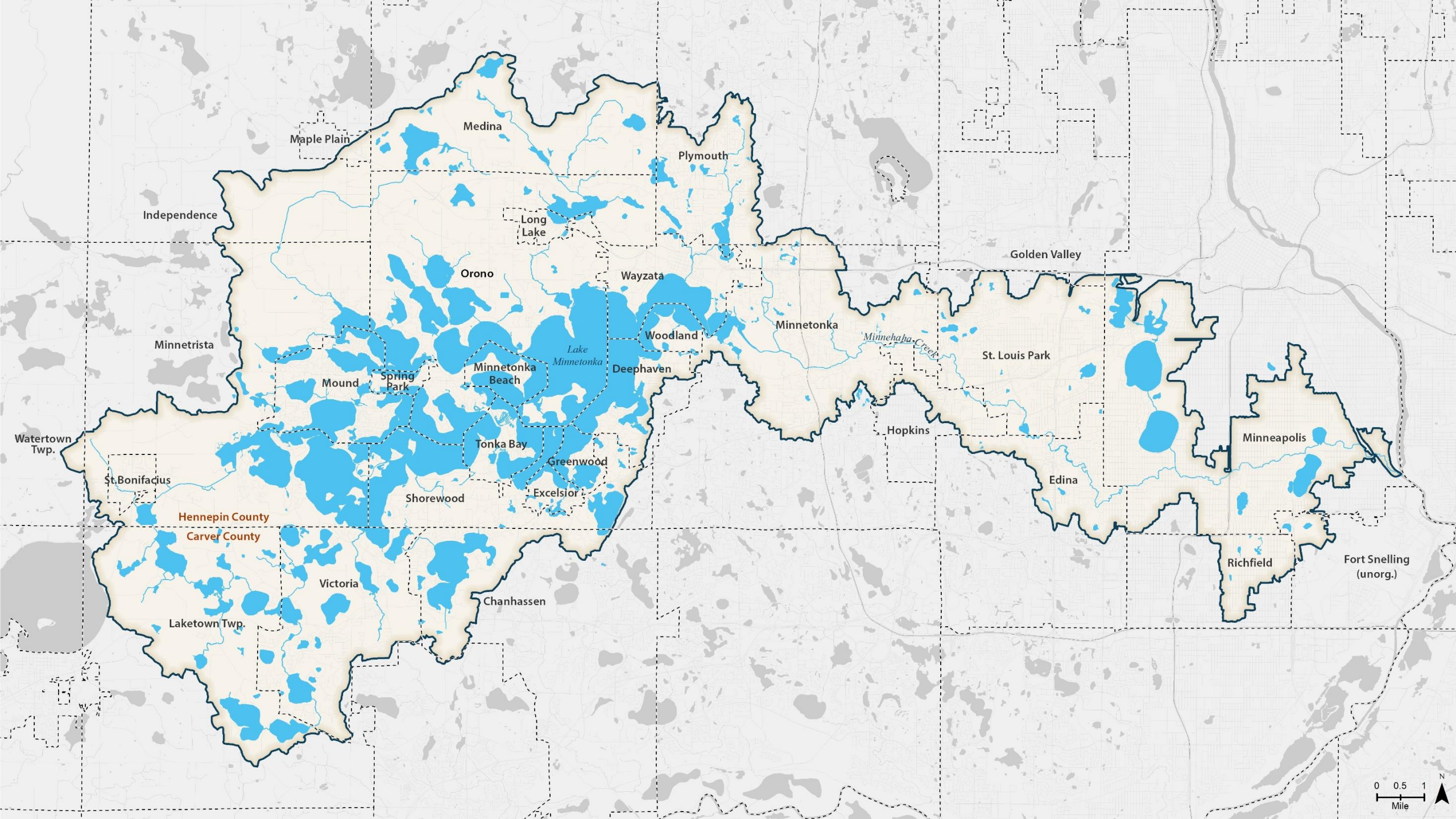


WATERSHED DISTRICT

QUALITY OF WATER

QUALITY OF LIFE

METRO STORMWATER GEODATA STANDARD
Metro GIS Coordinating Committee



Independence

Maple Plain

Medina

Plymouth

Long Lake

Orono

Wayzata

Golden Valley

Minnetrista

Woodland

Minnetonka

St. Louis Park

Mound

Spring Park

Minnetonka Beach

Deephaven

Minnehaha Creek

Minneapolis

Watertown Twp.

St. Bonifacius

Tonka Bay

Greenwood

Hopkins

Edina

Hennepin County

Carver County

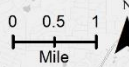
Victoria

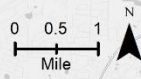
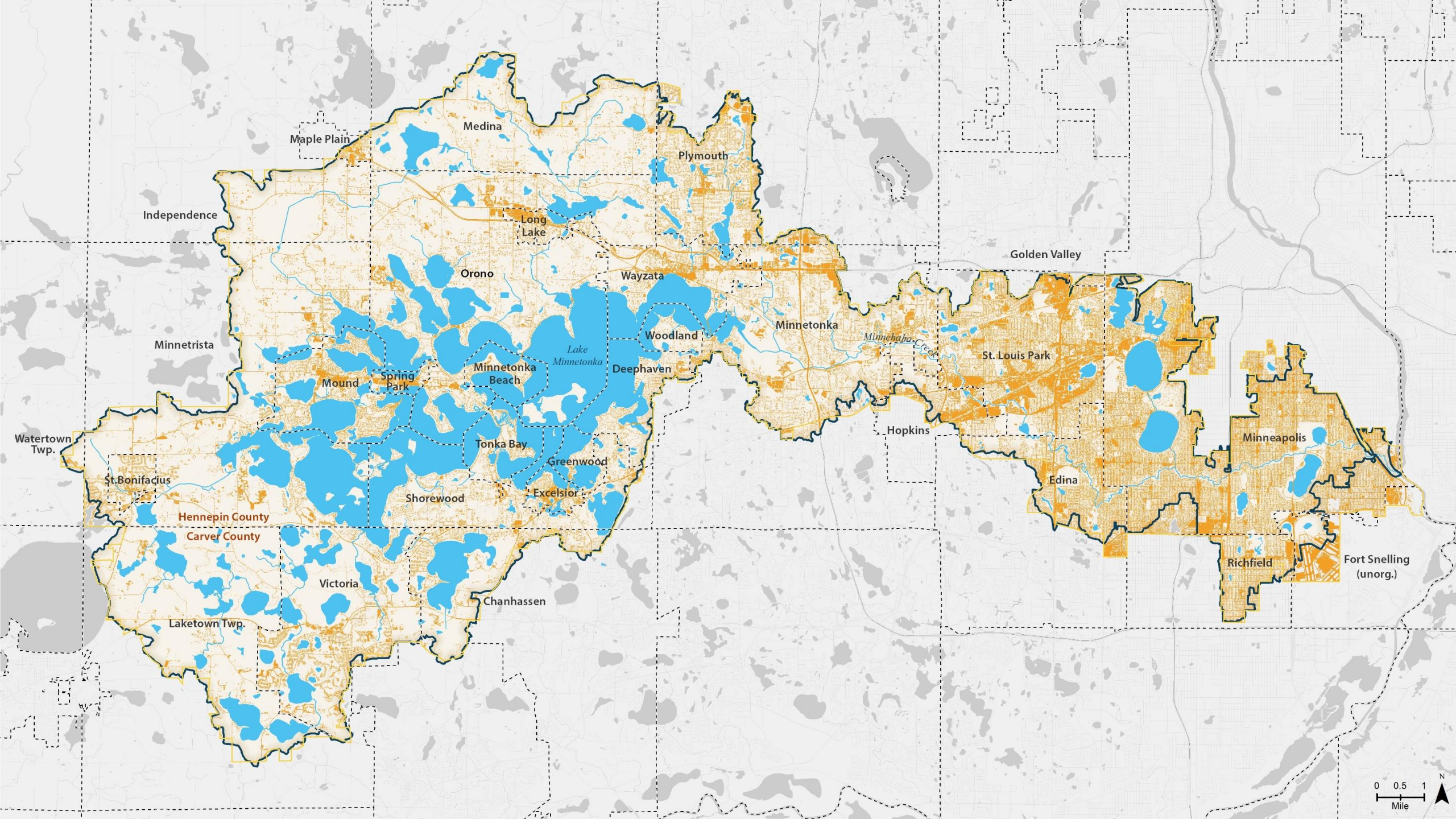
Chanhassen

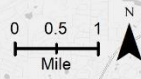
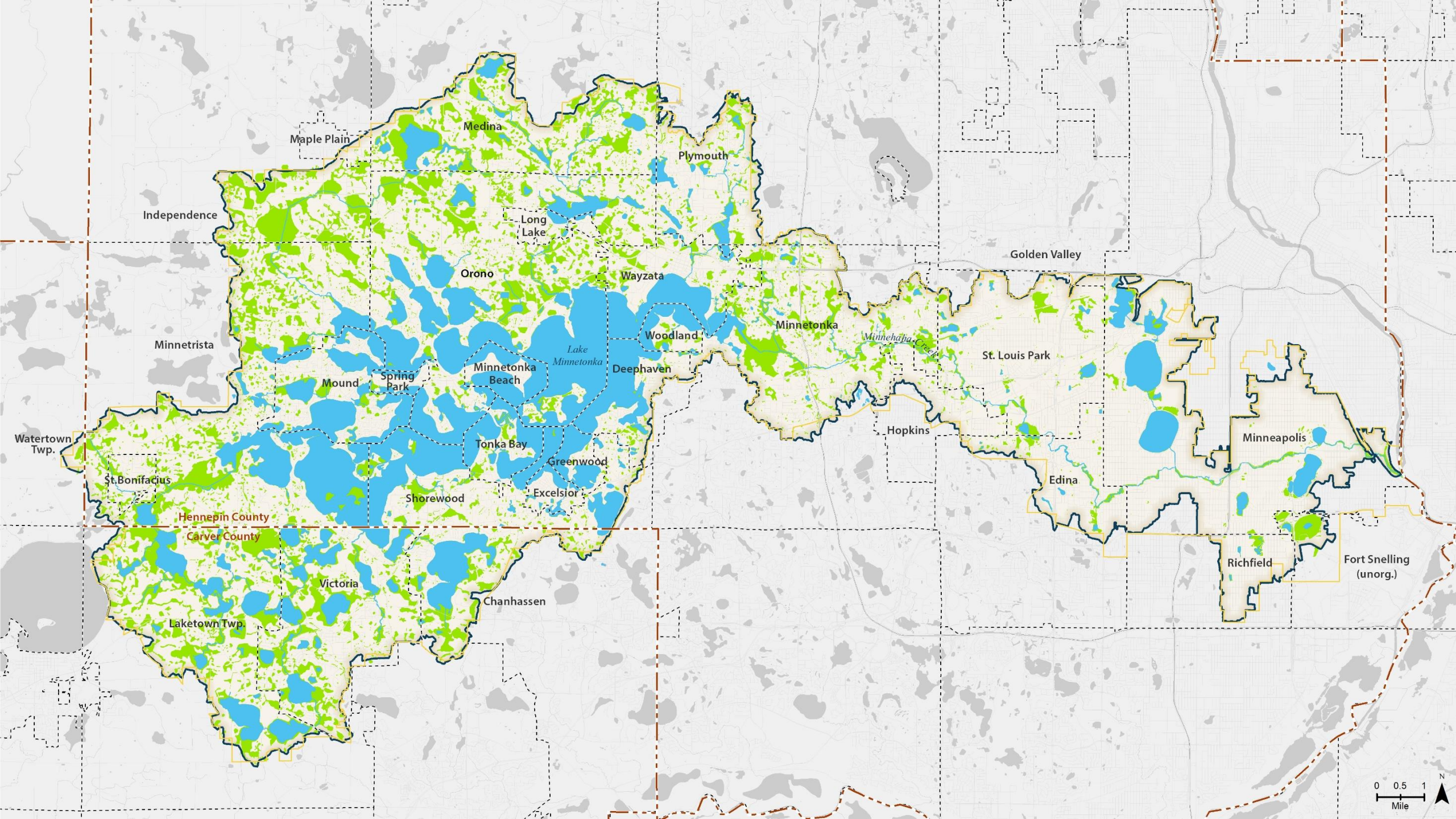
Laketown Twp.

Richfield

Fort Snelling (unorg.)







Maple Plain

Medina

Plymouth

Independence

Long Lake

Golden Valley

Orono

Wayzata

Minnetrista

Woodland

Minnetonka

St. Louis Park

Mound

Spring Park

Minnetonka Beach

Deephaven

Minnehaha Creek

Watertown Twp.

Hopkins

Minneapolis

St. Bonifacius

Tonka Bay

Greenwood

Edina

Hennepin County

Carver County

Shorewood

Excelsior

Richfield

Fort Snelling (unorg.)

Victoria

Chanhassen

Laketown Twp.

Goals



Water Quality



Water Quantity



Ecological Integrity



Thriving
Communities

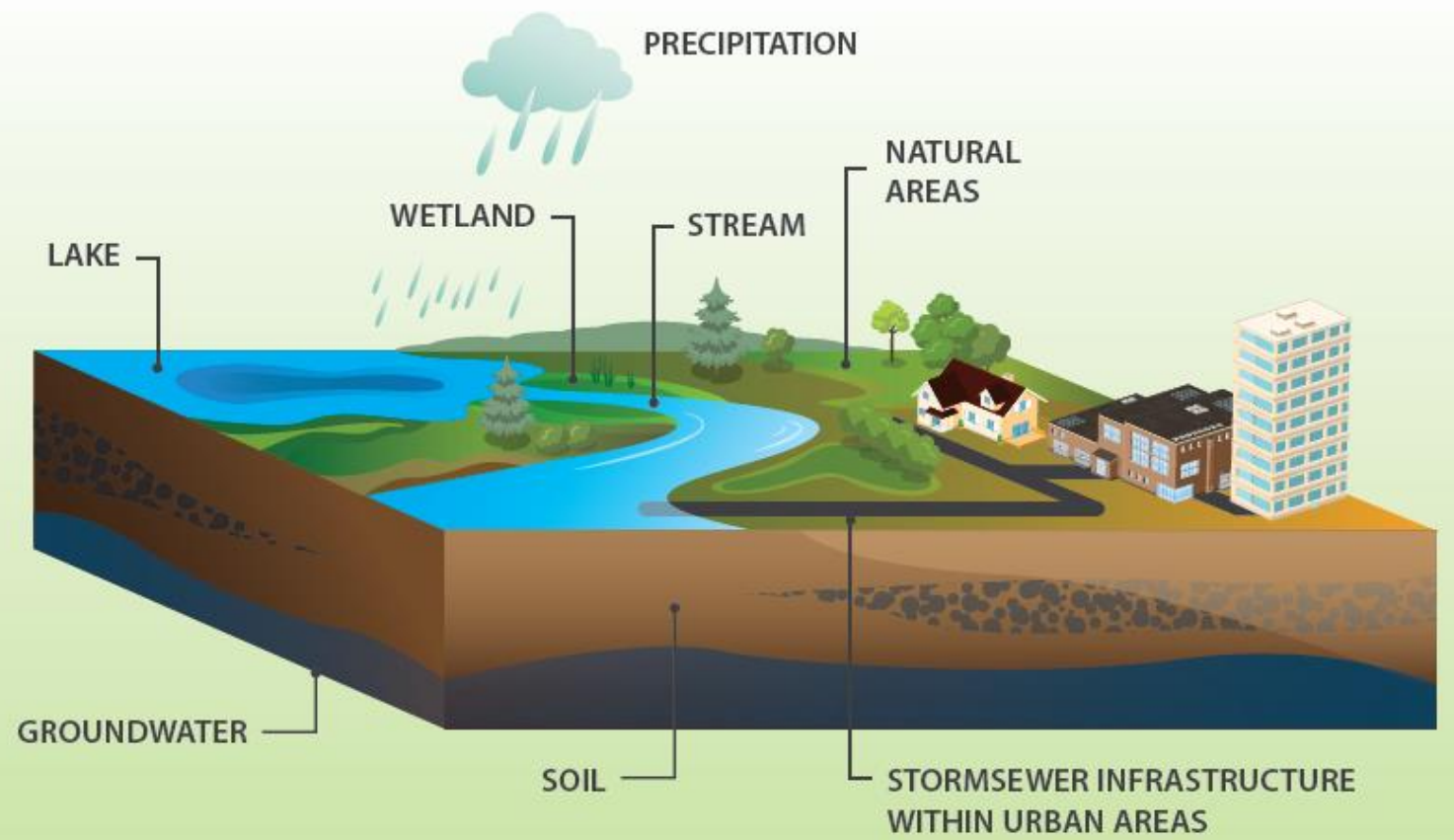
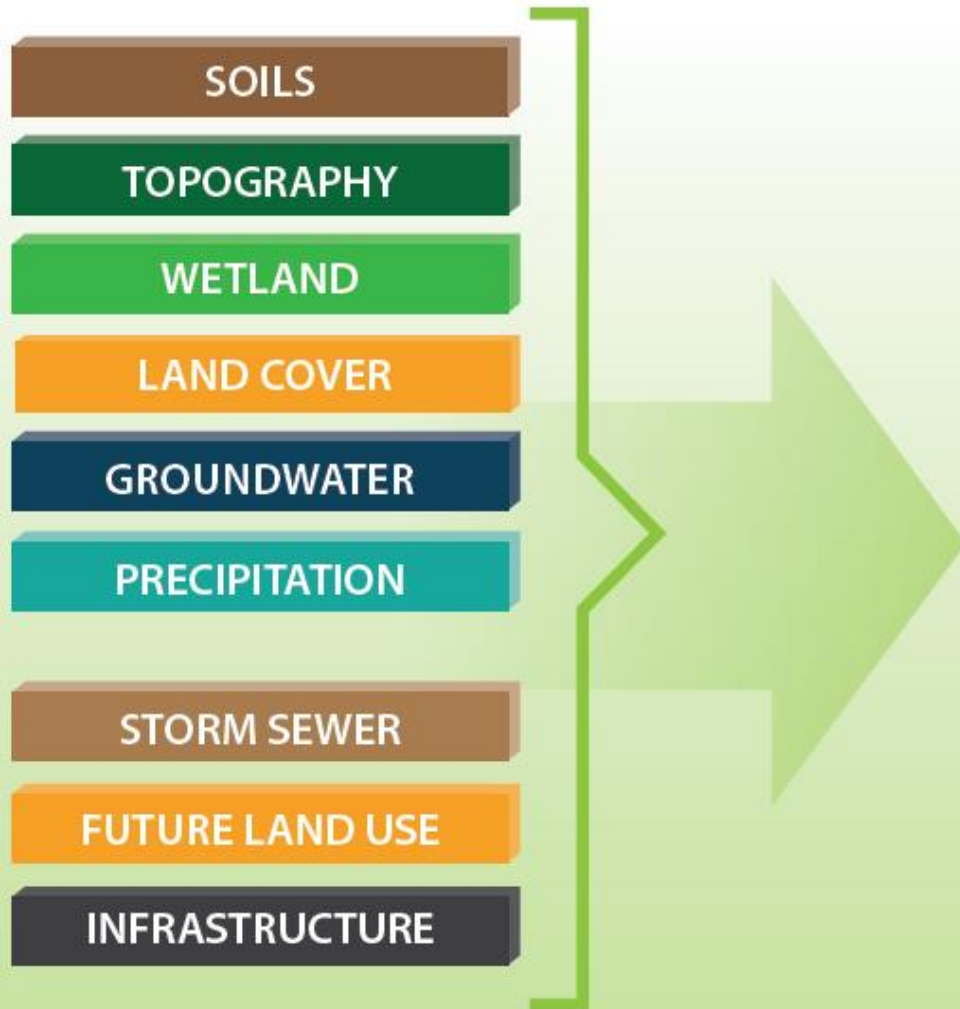
Guiding Philosophy

“ Rather than viewing the natural and built environments as a clash of opposing forces, we see the interrelated and interdependent character of modern life; communities cannot thrive without healthy natural areas, and healthy natural areas become irrelevant without the interplay of human activity. This is the setting in which we live.

- MCWD's Balanced Urban Ecology policy



Data-Driven

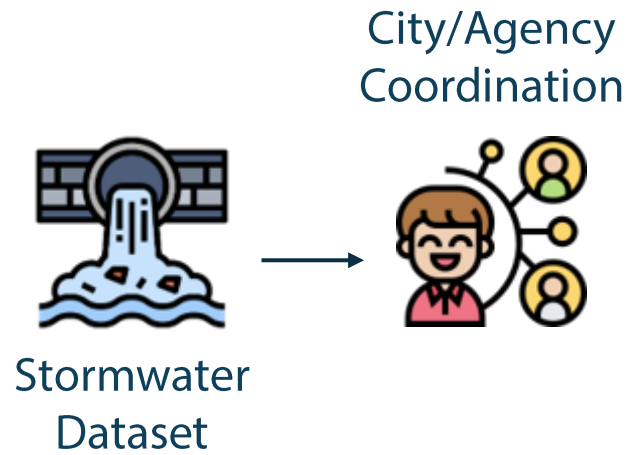


Standardization Process

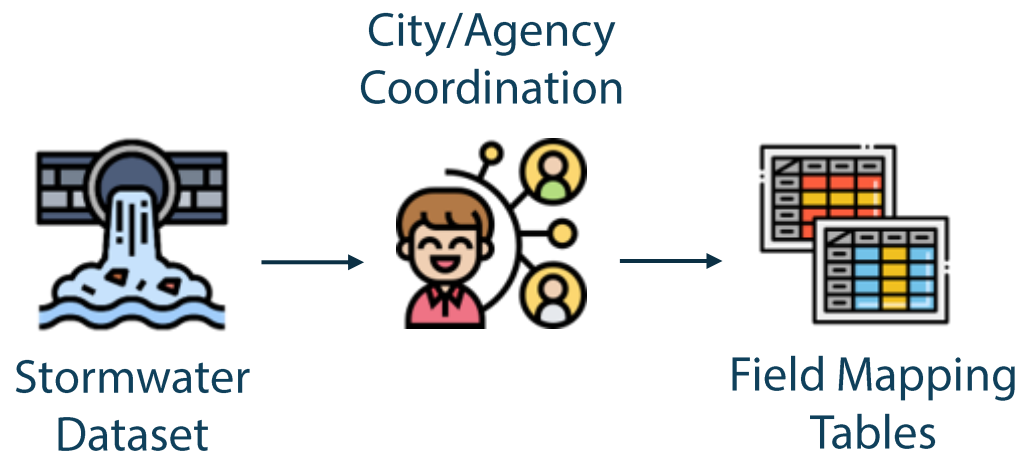


Stormwater
Dataset

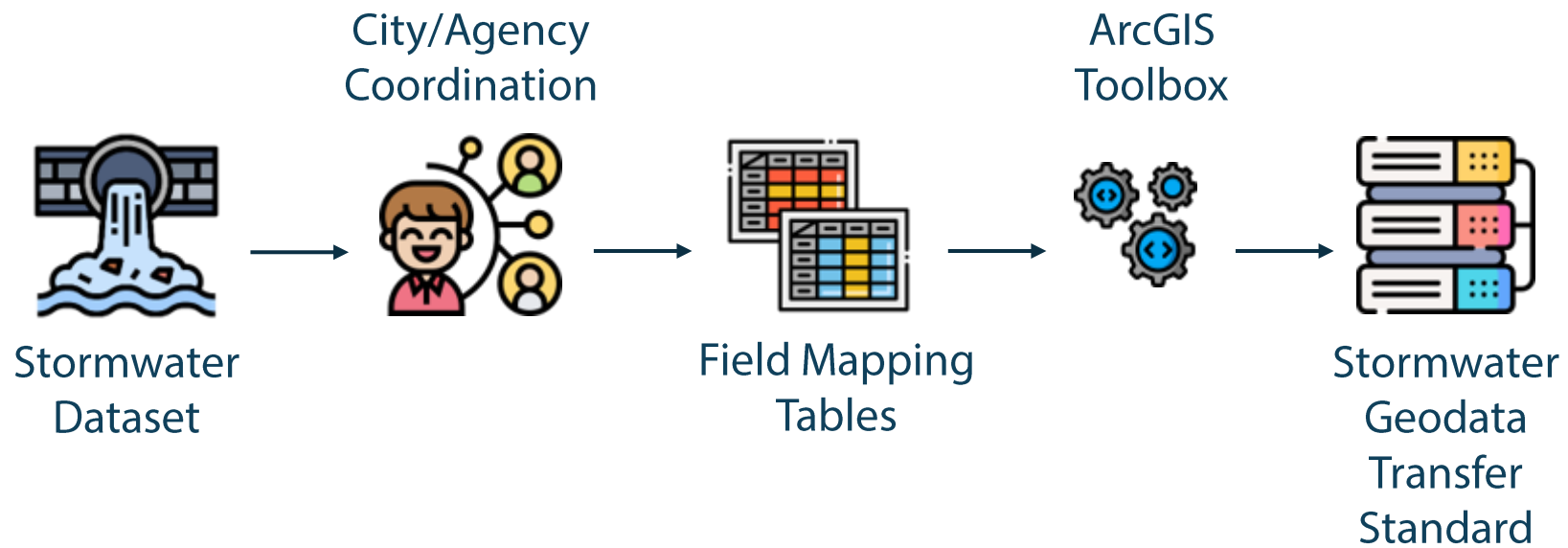
Standardization Process



Standardization Process



Standardization Process



MINNEHAHA CREEK



WATERSHED DISTRICT

QUALITY OF WATER

QUALITY OF LIFE

