

MetroGIS Coordinating Committee: Meeting Minutes

Thursday, March 24, 2016, 1 PM - 3:30 PM

Metro Counties Government Center, 2099 University Avenue, St Paul

Draft Minutes – Pending Approval of Coordinating Committee



In Attendance:

Matt Baker, Metropolitan Airports Commission

David Brandt, Washington County (Vice Chair)

Erik Dahl, EQB (Chair)

Brad Henry, University of Minnesota

Pete Henschel, Carver County

Mark Kotz, Metropolitan Council

Matt Koukol, Ramsey County

Eric Menze, Resource Data, Inc.

Nancy Read, Metro Mosquito Control

Dan Ross, MnGeo

John Slusarczyk, Anoka County

Ben Verbick, LOGIS

Sally Wakefield, MnDOT

Hal Watson, DNR

Ron Wencil, USGS

Carrie Magnuson, Ramsey-Washington-Metro Watershed District

Tony Monsour, Scott County

Bob O'Neill, City of Bloomington (alternate for Hal Busch, City of Bloomington)

Warren Fong, Hennepin County (alternate for Gary Swenson, Hennepin County)

Absent:

Gary Swenson, Hennepin County

Hal Busch, City of Bloomington

Curtis Carlson, Northstar MLS

Gordy Chinander, MESB

Len Kne, U-Spatial

Randy Knippel, Dakota County

David Bitner, dbSpatial

Jeff Matson, CURA/Non-Profit

Mark Maloney, City of Shoreview

Guests:

Sue Hauge, Metropolitan Council

Mike Dolbow, MnGeo

Allison Kampbell, Carver County

Matt McGuire, Metropolitan Council

Staff:

Geoff Maas, MetroGIS Coordinator

1) Call to Order

Chair Dahl called the meeting to order at 1:09 PM

2) Approve Meeting Agenda

No changes advanced; Motion: Magnusson, Second: Verbick

3) Approve Meeting Minutes from August 27, 2015

No changes advanced; Motion: Kotz, Second: Verbick

4) MN2050 Survey Update – Lessons Learned

Brad Henry provided an overview of the findings and results of the MN2050 infrastructure survey and some of the resulting outreach. With the new Federal Transportation Bill, recipients of federal funds must have a Transportation Asset Management Plan. Recently, Governor Dayton was quoted as saying Minnesota's roads, bridges and transit need more funding.

Henry outlined the findings of the recent MN2050 survey, one surprising finding is that cities (both larger and small) were managing fourteen (14) to fifteen (15) categories of assets compared to larger agencies such as the Metropolitan Council or the Minnesota Department of Transportation (MnDOT). Additionally, the survey revealed that over forty (40) different assets were being deployed by the agencies.

In terms of value, large infrastructure management agencies such as the Metropolitan Council and MnDOT account for only approximately ¼ of the total value of the infrastructure in the state. Small and large cities have the majority of the dollar value; this is in contrast to the current funding model where the state does not heavily fund local infrastructure.

Henry elaborated on the additional information gathering and continued outreach work of the MN2050 effort. He talked about the role of the Local Road Research Board coming up with a standard for asset management for counties to make use of and the efforts of the Rural Water Association to assist small cities perform their asset management work, which can hopefully be a model to be replicated across the state. LRRB recognizes that many small communities have limited resources for this work and offers a set of low cost tools to assist small cities. Many small cities, such as Ostrander (Fillmore County, population 507) and Rushford (Fillmore County, pop 1,720) are well aware of the value and status of their infrastructure.

5) Carver County Asset Management System

Allison Kampbell and Pete Henschel of Carver County's GIS Office gave a presentation on how Carver County is partnering with its constituent cities in its asset management efforts.

Kampbell emphasized the success of the work between county and city efforts as the results of their shared GIS position, county-wide enterprise license agreement, shared workflows for asset collection and management, using common data models, data sharing between organizations and network connectivity.

Initially cities in Carver County had limited GIS experience and resources, but with support from the county in processing project requests, understanding the data workflow and building relationships through the County User Group they have realized significant organizational and operational success.

Kampbell outlined the shared GIS position benefits included lowering the costs of work, speed and efficiency of getting GIS set up and running, sharing knowledge and data and sharing their workflows for asset management. By partnering with the cities, the relationships between the cities and counties has strengthened and the county's data is more accurate by leveraging and tapping into local knowledge. To further the efficiency, Carver County maintains an ESRI Enterprise License Agreement where cities can be added, with additional costs negotiated and costs being split based on population.

Regarding asset management, cities are able to use county GPS resources and equipment to collect information on water, sanitary sewer, storm water networks. Cities also desired their own paper maps, wall maps, map books and web applications which the county was able to configure and share to facilitate map creation. The city-county partnership is also leveraging the ArcGIS Online platform for viewable web maps and collector updates for maintenance; facilitating the use of tablets and phones for ease and efficiency of use.

Carver County and its cities state that key to organizing the data was using the ESRI local government model; leveraging standard layers and information using best practices from the industry. Using this kept everyone from having to start from scratch, pre-set attributes and domains to build upon and later modify made things easier.

In terms of sharing data, the county hosts databases and services for the cities using ArcServer, these are managed by the Shared GIS Position, county-wide datasets are shared with the cities (these include parcels, address points, centerlines, imagery, etc.) and city data (utilities, water, sanitary, stormwater, etc.) are shared with the county departments. Cities contribute and edit local data within the county-wide datasets; partners have direct access to the data, there are no copies or ftp sites to deal with, keeping the data always in sync. Network connectivity is provided by CarverLink, fiber connection between County and Cities. The trust built up between the city and county partners enables direct access and usage of one another's live data.

Upcoming projects include working on a data warehouse to be hosted at the County, one single portal for all GIS data (city and county), developing and refining county-wide utility datasets, rolling out maintenance and inspection forms and facilitating mobile devices to do that work and the deployment of operations dashboards to managers for asset management tracking and measurement.

Sally Wakefield: I'm curious about the how other cities which are not participating, how you plan to bring them in.

Pete Henschel: We have approached all the cities in the county, and most are for participating. At present (City of) Carver have a contracted engineer and planning. Chanhassen has their own GIS staff, but she works very closely with us.

Brad Henry: When engineering projects are in the planning stage, what do you do with as built drawings?

Allison Kampbell: Either quarterly or semi-annually we send the dataset back to the engineers, most of the cities have an outside engineers for updates.

Brad Henry: Are they updating the data during construction?

Allison Kampbell: The county may do it often times these updates come from the engineers.

Matt McGuire: Are you and the cities all using ESRI to do asset management or just to store and view data?

Allison Kampbell: Chanhassen and Waconia are using Cartograph, Norwood-Young America is using the ESRI platform and Watertown is examining using ESRI. The smaller cities don't feel they need a full asset management package like Cartograph.

Brad Henry: (State Auditor) Rebecca Otto's pitch behind smart city infrastructure stress tool would be for us all to have one place to go to in Minnesota to get infrastructure data. Her office is examining how to take the lead on that.

Sue Hauge: Are there any security issues about having the data on the devices?

Allison Kampbell: The data is not resident on the devices, all the utility data is secure (Secured at the service level) users must log in to view it and use it.

6) State of the Commons

MnGeo GIS Supervisor Mike Dolbow gave a presentation on the current status of the Minnesota Geospatial Commons and tendered a request to the MetroGIS Coordinating Committee for \$14,110 of its 2016 Project budget.

Dolbow emphasized the on-going collaborative approach, the Commons is not just a MnGeo or MN.IT Services effort; it's about the entire state having a resource and site to publish data, acquire data and engage. He cited that since 2014, the Commons has expanded significantly with recent contributors including Itasca County, MVTA, Dakota County, MetroGIS and the Metropolitan Council putting the number of resources available over the 530 mark, which is still growing. There is an awareness and recognition of many more potential contributors as well which are certainly welcomed.

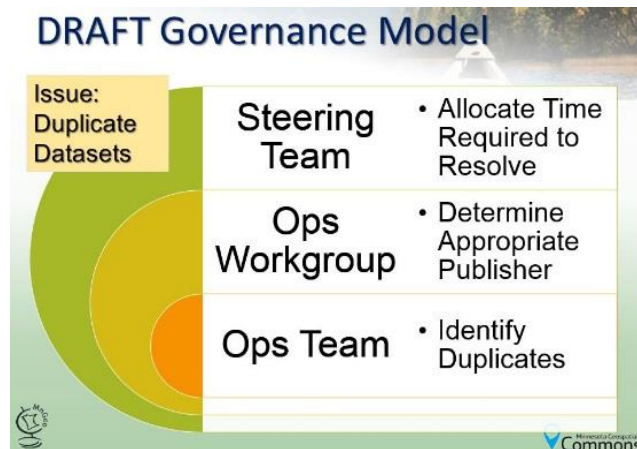
Dolbow provided context about the architecture behind the Commons, describing how the GeoBroker enables contributors to control access to and manage their data and the roles of the FTP and GDRS in facilitating the data acquisition process.

Dolbow highlighted the on-going need for governance of the Commons; it has a strong operations team, but leadership for policy and costs decisions is also needed. Current Commons Operations Team members include: David Fawcett, Karl Hillstrom, Andrew Koebrick, Brent Lund, Nancy Rader, Alison Slaats and Zeb Thomas. Dolbow indicated that he would welcome a non-state agency member to participate on the Operations Team.

Dolbow further cited that sustainability of operations is vital to keeping the Commons up and that the governance piece will be important for that, defining how decisions are made. The team has already

worked out key decision like who can publish (organizations and not individuals), the need for registered users identified by their real name and the organization they represent and the conditions of what can be published (data should be free and open, must cover at least part of Minnesota, non-geospatial data is ok as long as it has a foreign key for linkage or contains a geocodable address. Discussions continue about CAD data, duplicative datasets (Same data produced by two agencies), aggregated data (multi-city or multi-county) and metadata expectations. Data resources hosted on the Commons may be limited due to the size of the file. New questions continue to arise and need to be addressed. Dolbow indicated that they were in the process of drafting a governance model, and cited the example of how governance would operate on the sample topic of duplicative datasets.

The slide at right examines the sample issue of Duplicate Datasets, the Ops Team would identify the duplicates, the Ops Workgroup would determine who is the appropriate publisher and the Steering Team would allocate the time required to resolve the problem. Current ideas about Steering Team membership include including representatives from the five (5) largest publishers/contributors.



Anticipated needs and upcoming work with are currently funded include how to stabilize the infrastructure, addressing the disk capacity needs, reduction of GDRS duplication and diversifying the publishing methods. Unfunded, but also much needed activity, includes streamlining the implementation of new data types, tiling of datasets, data aggregation, prioritizing search results, and prompts to data publishers for updates and issues and harvesting data in and out of the Commons.

Request of funding from MetroGIS 2016 Budget. Dolbow tendered a request of \$14,110 to the Coordinating Committee from the 2016 MetroGIS budget, this is intended to compliment anticipated and committed contributions from other agencies including MnDOT, MPCA, Department of Agriculture and the Department of Health. Contribution to the funding of the Commons positions MetroGIS to have increased input on the resource and its governance.

Mark Kotz: We see that we’re at the point with the Common’s development that there is the hope that non-state partners are being invited to publish. Do you have a plan to ask for funding from those interests as well or is that still in discussion?

Mike Dolbow: I believe I will pass that over to Dan [Ross] to answer.

Dan Ross: We would like to not have to charge anyone, however, it does have a cost to maintain. Our executive leadership indicates that we have costs we need to recover. MnGeo covers a significant portion from its General Fund allotment, and in the near future I do not see a scenario where it will be completely free. Some of the specific things we are working on such as more storage, particularly as some of our partners are off loading their larger raster data sets presents affects the costs. We do not intend to approach every actor in the state, we are working primarily with the larger providers first.

Mark Kotz: There may be data producers who are considering placing their data on the Commons, but there isn't clarity as to if they will be charged for that service. Or there is no charge when they first publish, but two years later they are asked to contribute and then they could potentially take down their data. We understand the challenge of getting funding, but it would be good to have some clarity for the entire community of producers on how that is going to be managed. If you are below a certain threshold, you don't get charged, if you are above a certain threshold you will be charged or asked to contribute.

Dan Ross: Right, and our 'ask' today is really for two things, one, is for the contribution of the \$14,110 to help with operational costs, and the second, as Mike [Dolbow] mentioned, is for a member of this group to help with the governance. By helping us work out the criteria Mike talked about we can better understand the costs we need to address.

Ron Wencil: So, in your ask for members of the governance group are there some guidelines or types of candidates you want specifically?

Dan Ross: As of now, our steering team has not been ratified so we are feeling that out. I would really like to see another data publisher have a representative on it. To publish data is both a technical operation decision and a policy and cost decision. The ones publishing the data are the ones making those decisions. If we get a monetary contribution from MetroGIS, that clears a path to having a seat.

Dave Brandt: Something that occurs to me is that, MetroGIS gets its money from the Metropolitan Council. The "ask" is coming to MetroGIS, but the MetCouncil makes those funds happen so is it then the Council's seat?

Nancy Read: Something I'd like clarified would be, is this a one-time ask or something that would be an annual request? Very often MetroGIS has funded things as a one-off, is this an effort to get sustained funding?

Mike Dolbow: This isn't a one-time project ask, we would be looking for funding again, but, we would be re-evaluating the costs each year as needed, and we can anticipate some costs of the running the Commons as declining over time.

Nancy Read: So, if someone can re-fresh my memory, how did we fund DataFinder?

Mark Kotz: The Metropolitan Council paid for it, putting together and maintaining DataFinder was essential labor. When we hired consultants, the MetroGIS body approve funds for that, but the cost of operations were absorbed by the Metropolitan Council. The Commons is not a savings to the Council, we are not saving a ton of money by publishing to the Commons, this similar work on a different platform.

Sally Wakefield: I'd like to hear from the county members around the table about what efficiencies are offered to them by the Commons.

Matt Koukol: At present we [Ramsey County] are not publishing data to the Commons. To be honest, at we don't anticipate any greater efficiencies in doing something different than publishing from our county portal. We use web services for a lot of our internal data needs and we intend to keep doing that.

Dan Ross: We still would like to be able to link from the Commons to your local sites, and we realize that we need some additional metadata work performed by the counties.

Ben Verbick: In looking at the resources to fund this beyond MetroGIS. If the Commons is looking to small data producers to fund this, I tend to agree with Mark [Kotz], that this may not be the most effective way to go long term. Matt [Koukol], you gave us part of that answer in that you don't see a significant benefit to have your county's data up there, and you are already doing work to collect your city's data and put it up through your county site. Cities may not have a real incentive to put their data up on the Commons. Lone, small producers who might be creating really valuable data might not have the ability to participate if the cost of entry to the Commons remains. Long-term funding for the resource needs to be addressed. Cities really like the site as data consumers of state and regional data but are not in any position to contribute to the funding.

Dan Ross: That is understood, still we want to emphasize the value in being able to acquire or at least locate the data from one place. One example is Waseca County, they are looking to open up their data, but don't have the resources to stand up a portal, they can benefit by using the Commons to get it out there. We recognize we don't need to be all things to all people.

Ben Verbick: We all agree it's an amazing resource, but its key that we address the long-term sustainable funding, we don't want to see a scenario where we charge the users and at the same time costs have to be recovered that aren't addressed by your general fund allotment.

Dan Ross: We know we have more to discuss on this.

Erik Dahl: We will vote on approval of funding during Agenda Item 10c when we have our existing project updates.

7) Image Tiling Specification – Request to Create Work Team

Matt McGuire of the Metropolitan Council reminded the group of a short presentation he gave in March of 2015 on the potential for an image tiling scheme. He showed a number of slides with the current publicly available imagery and their tile scales.

County Tile Scales: March 2016

He stressed that the constituent members of the MetroGIS community create basemaps or image map web services that are tiled and cached and using a uniform system would better enable us to leverage one another's data.

He outlined how the Metropolitan Council deploys ArcGIS Collector for a variety of field work uses (waste

Anoka County	Carver County	Dakota County	Hennepin County	Ramsey County	Scott County	Washington County
				240		225
				360		
600	564.25	600	600	600	600	550
1200	1128.50	1200	1200	1200	1200	1128.50
2400	2256.99	2400	2400	2400	2400	2256.99
4800	4513.99	4800	4800	3600	4800	4513.99
9600	9027.98	9600	9600	8000	9600	9027.98
19200	18055.95	19200	19200	16000	19200	18055.95
38400	36111.91	38400	38400	32000	38400	36111.91
76800	72223.82	76800	76800	64000	76800	72223.82
153600	144447.64	153600	153600	125000	153600	144447.64
200000	288895.27	307200	400000	175000	307200	288895.27
	577790.55					577790.55

water treatment assets, manhole covers, etc.) and how incredibly useful the high resolution county data is for detecting small features in the collector application. Very helpful to have good imagery during periods of snow cover. Many metro counties produce 6" resolution imagery and serve it up as web services which the Council, and presumably others, harvest for a variety of uses. He also shed light on the 'elephant in the room' issue of the willingness to discuss and adopt the Web Mercator projection for tiling scheme activity.

Matt postponed the creation of MetroGIS work group to discuss and develop a set of best practices for a regional tiling scheme. Matt indicated that this group would have no more than six meetings, one in person with the remainder as conference calls over the course of the spring and early summer. The group would work to develop a unified solution, with a draft specification for review and sanction of the Coordinating Committee at its next meeting.

Nancy Read: How might this relate to the Image Service?

Matt McGuire: The Image Server is a great resource, but as it exists, it doesn't support the kind of tiling we are looking at. With so much of what we're dealing with being base map driven setting up a consistent tiling scheme would facilitate easier consumption of the image.

Tony Monsour: Would this tiling scheme be a requirement?

Matt McGuire: No, this is not a requirement on any participating partner or agency, it is simply the opportunity to discuss the issue and see what everyone's needs are and see if we can generate a recommendation or a best practice; entirely voluntary in nature.

Mark Kotz: Matt, do you have any documentation of what we are going to do?

Matt McGuire: I am in the process of developing that, I plan to have those materials ready prior to any first meeting to circulate to the participants.

Mark Kotz: I'd suggest the goal of this work group be to present us (the Coordinating Committee) with a recommendation for a tiling scheme and the goal of this group to approve it as a best practice tiling for MetroGIS' stakeholders

Motion to approve the creation of a MetroGIS Imagery Tiling Work Group

Motion was made by David Brandt, seconded by Mark Kotz.

Vote: Unanimous in favor.

8) Policy Board Update

Geoff Maas gave a quick update on the upcoming MetroGIS Policy Board meeting, He reminded the group that the Policy Board now officially meets in person once per year, with periodic electronic update to the group as warranted. The next meeting is scheduled for Wednesday, April 27, 2016, 7 pm at the Metro County Government Center. Key agenda items include:

The formal adoption of the revised Operating Guidelines and Procedures

Brief updates on current MetroGIS projects

Informational item about the Utility Infrastructure Integration (UI2) project in Golden Valley

Maas asked the group if they had additional items of policy or significant fiscal import that they wish to present or have presented at the Policy Board. Hearing none, Maas, gave the group a very brief overview of the forthcoming UI2 initiative.

The UI2 is a pilot study/proof of concept being led by Hennepin County's Public Works Department, the City of Golden Valley and the Metropolitan Council's Environmental Services Department. Xcel Energy and CenterPoint Energy have also expressed their interest in participating. For the pilot, each agency with existing or forthcoming projects within the City of Golden Valley will agree to put their information into a format (with 8-12 key attributes about the project, agency contact and start/end dates) so all parties can view and consume one other's information and leverage shared excavation work. A 'Utility Summit' will be held on April 6 in Medina for the partners and other agencies interested.

9) MetroGIS' 20th Anniversary

Geoff Maas showed a few slides from MetroGIS' past, including old logos, news articles and email correspondence and ran down the original 13 data needs expressed by the collaborative partners in 1996-97 and rated how MetroGIS has fully, partially or not satisfied those needs to date. Maas also mentioned that he would be submitting an abstract to the GIS/LIS Annual Conference in Duluth to talk about MetroGIS's 20 year milestone in terms of what has been accomplished and what remains to be done.

10) MetroGIS Project Updates

10a) Address Point Aggregation. Maas provided an updated on the status of address point aggregation. A regional effort with DNR partnership took place in fall 2015 using data from Carver and Dakota Counties. This group confirmed a process testing and using GDRS and FTP, tasks remaining in that effort include completion of the backend aggregation and creating a package for other data producers to use so they can easily contribute data using the same workflows.

This group met with MnGeo staff who are constructing the MRCC and NextGen911 portals on January 26 to discuss merging their efforts. Continued work on this is anticipated after the Metro and 911 interests better understand and document what their shared needs are for address point data attributes.

The Metropolitan Council offered to continue to collect, aggregate and publish the address points of the seven metropolitan counties until the state portal method is complete.

Geoff Maas showed a few slides from MetroGIS' past, including old logos, news articles and email correspondence and ran down the original 13 data needs expressed by the collaborative partners in 1996-97 and rated how MetroGIS has fully, partially or not satisfied those needs to date. Maas also mentioned that he would be submitting an abstract to the GIS/LIS Annual Conference in Duluth to talk about MetroGIS's 20 year milestone in terms of what has been accomplished and what remains to be done.

10b) Metro Regional Centerline Collaborative (MRCC). Maas provided an update on the MRCC project, indicating that the data from the ‘First Build’ was collected in December of 2015, Hennepin County’s Tracy Tisbo performed an assembly and audit of the data and the MRCC team members met on 2/29/16 for a Milestone Meeting to adjust the MRCC data specification to reflect needed changes and errors encountered. The timeline for the MRCC includes a ‘Second Build’ of the data through the summer of 2016, with 9/30/16 identified as a goal date for 90-95% of the attributes to be populated and the data going into maintenance mode with monthly updates and full public availability. All project documents are available on the metrogis.org website under Projects >> Metro Centerlines.

10c) Support for the Geospatial Commons. To follow on from Mike Dolbow’s presentation earlier in the meeting, the Committee debated the approval of MetroGIS budget funds in 2016 to provide support to the Geospatial Commons. Maas illustrated the current 2016 MetroGIS budget as follows:

Total 2016 Budget	\$86,000
2016 Parcel Contract	-\$28,000
Historical Aerial Project	-\$5,076
Miscellaneous Expenses	-\$2,000*
2016 Available Project Funds:	\$50,924
Commons request:	-\$14,110
Remaining 2016 funds:	\$36,814

**Earmarked, but not formally or contractually committed*

Chair Dahl asked if there was a motion to approve.

Sally Wakefield: I propose a motion, and I’d like to elaborate on a few additional points. In so far as we are in a position to provide financial support, I think we should accept Mike’s [Dolbow] offer to then have a seat and a voice in the governance of the Commons. We all know as data consumers it is time consuming to have to visit many sites, so in our spirit of regional collaboration we should continue to examine and support things that make data centralization happen.

Nancy Read: I would agree and second the motion.

Chair Dahl asked if there was any additional discussion on the topic.

Mark Kotz: I would echo what Sally said. Speaking from the Council’s perspective, moving our data into the Commons from DataFinder wasn’t motivated by cost savings, DataFinder was not costly; we did so from the stand point of providing good government. It is the right thing to do and the right way to serve our citizens and it aligns with our mission and the Commons’ mission.

Nancy Read: When we had DataFinder active, we had an annual report on its metrics, is this possible to get from the Commons as well? This could help us understand who to connect to for funding and to participate on the Commons governance and steering team.

Dan Ross: We can pull together the metrics on users and share that with the group.

Mike Dolbow: We are currently using Google Analytics to track the use of the Commons.

**Chair Dahl cited that there was a motion and a second and asked for a vote.
Vote was unanimous in favor.**

10d) Free + Open Geospatial Data. Maas cited that with Hennepin County granting its approval, all seven metropolitan counties data can be freely re-distributed by the Metropolitan Council, even though the Parcel Contract extension through the end of 2016 remains in effect. Maas showed the updated MetroGIS website for parcel data and the updated Free and Open Public Geospatial Data map (as of December 15, 2015), notably, Itasca County adopted a free and open data resolution on December 9, 2015 and Rice and Waseca counties are actively pursuing paths to free and open data. Maas also cited that the White Paper II resource had been updated on December 23 with future updates anticipated and encouraged.

10e) 2016 Aerial Imagery Collection. Mark Kotz described the main contract as being an inter-agency agreement between the Metropolitan Council and MnGeo. MnGeo is managing the contract with Surdex for 1' imagery, with four metro counties (Dakota, Scott, Carver and Anoka) participating in the buy-up for 6" imagery. The Council assumes the cost of the 1' imagery, and if the counties fly the 6" inch, receive the cost break and the Council will accept imagery down sampled back to 1' resolution. The flight lines have been defined, ground controls are in place, they estimated 4 days of flying to perform the 1' capture of the metro, again, with much of this dependent on the weather. If there is a time crunch or weather issues, they may need to abandon the 6" imagery, we certainly hope it doesn't come to that. Delivery of the data is anticipated in August, with final delivery by the first of December, however, Surdex has made mention that it could very well be earlier. All this data will be freely and openly available to the public.

10f) Historic Aerial Imagery Mosaic and Archive Project. Geoff Maas reminded the group of its decision to support and fund a Council/U of Minnesota project to scan, geo-rectify and serve historic aerial imagery of the metro from the Borchert Map Library archives; \$5076 of the 2016 MetroGIS budget has been allotted to the effort. The contract language has been drafted and approved by the legal counsel of both agencies, however, during the due diligence research it was discovered that the 1966 set of images were no longer in the ownership of the Metropolitan Council, ownership of these materials had been transferred to the ownership of the State Historical Society. Maas is following up with State Historical Society legal counsel to keep the issue moving.

10g) Statewide Park and Trail Data Standard. DNR and MnGeo are the project sponsors, no progress on the project to date.

10h) Metro Regional Stormwater Research Two additional stakeholder's business cases have been documented Metropolitan Council Water Supply Program (Environmental Services) and Metropolitan Council Local Planning Assistance Climate Resiliency Project (Community Development). We will continue to document the business cases of self-identifying partners as they emerge.

11) Lightning Round: Participants are encouraged to share any updates they have on what their agency is doing in the realm of GIS projects and initiatives.

Matt Koukol (Ramsey County): Ramsey County is looking at a large asset management system including all kinds of analysis including things like depreciation curves and how we can sustain our assets. We are also looking as to how we can take on ESRI Roads and highways, and looking at moving toward some large open data portal (not just geospatial) initiatives.

Pete Henschel (Carver County): We are underway with re-branding our web applications so they all look the same.

Warren Fong (Hennepin County): We are deeply involved in our local build of the MRCC, working to coordinate six different departments within Hennepin County. We are also working with our community corrections folks on an initiative for GPS tracking for parole officers, we have around 300 parole officers in the field in the county.

Adam Iten (ECN/MN.IT Services): We are in the first review of draft NextGen911 standard, we have it out for review and comment and we anticipate at least two more review periods. This first review period ends in April, having been distributed to all PASP and GIS partners; we continued to encourage GIS offices to develop good relationships with and work closely with their PSAPs. We also will be convening a group to work on the Address Points Standard. We anticipate having a standard by June for everyone to work with and evaluate.

Mike Dolbow (MnGeo): Thanks for the affirmative vote

Ron Wencil (USGS): I'd like to let everyone know that we will be beginning production on updated topographic mapping in June, and we will have more activity on the national hydrographic requirements work,

Sally Wakefield (MnDOT): MnDOT's metro office has received STIP Authorized funding for a project via to start deploying ArcGIS Online, also we have a huge asset management collection effort underway, specifically working with LiDAR, we are contracting out for the collection, but we will process it "in house"

Carrie Magnuson (RWMWD): No updates.

Ben Verbick (LOGIS): LOGIS has been working with Hennepin County in deploying the Address Point Editor to establish a data flow with our cities, Golden Valley has gone live, they are editing with the editor and the datasets at Hennepin County are being populated directly with that. We are also working with Minnetonka and Maple Grove, we are using a configuration very similar to that in use by Carver County. Cities are also looking at and evaluating the MRCC model. Most of our cities have AGOL and we are actively looking for collaborative opportunities; ESRI licensing doesn't presently allow a 'pool of users' but we'd like to see how others are working together on it.

Eric Menze (Resource Data, Inc): No updates.

Sue Hauge (Metropolitan Council): I'm here as an observer today, it's exciting to see the work you are all engaged in together.

Bob O'Neill (City of Bloomington): We are now up to about 30 users of ArcGIS across our various divisions in the City of Bloomington, we have implemented a portal and are looking to do more with web apps.

Nancy Read (Metro Mosquito Control): We have finished our survey of over 70,000 wet areas in the metro region, we will have that as a piece of data, and I have made a resolution to get that into the Commons.

Mark Kotz (Metropolitan Council): I have already mentioned the aerial imagery collection. We are working to better formalize the role of AGOL in the Council, enable our various divisions to use it to publish it, or make an app, we need to do additional work in communicating and coordinating with our various departments to make this successful. We are in the process of upgrading to 10.3 and we are continuing to develop field collection applications to deploy on iPads and Windows 10 tablets.

Geoff Maas (MetroGIS): I will be giving short presentations at the UMGEOCON Conference in La Crosse in late May on the open data effort and the MRCC.

David Brandt (Washington County): We are working to a lot with CAD and automated RMS (Records Management Systems) and improving our data. We have had some help from the state on cleaning up our address information. We also are working with our yard waste planning process with the Health Department on route planning and placement.

Erik Dahl (MnEQB): No updates from the Environmental Quality Board.

12) Next Coordinating Committee Meeting:

The next meeting of the Committee is scheduled for Thursday, June 23, 2016, 1 pm

13) Adjourn

Motion to adjourn: Ross, Second: Kotz

Chair Dahl adjourned the meeting at 3:29 pm.