



# MetroGIS Coordinating Committee

Thursday, January 25, 2024




# MetroGIS Coordinating Committee

January 25, 2024

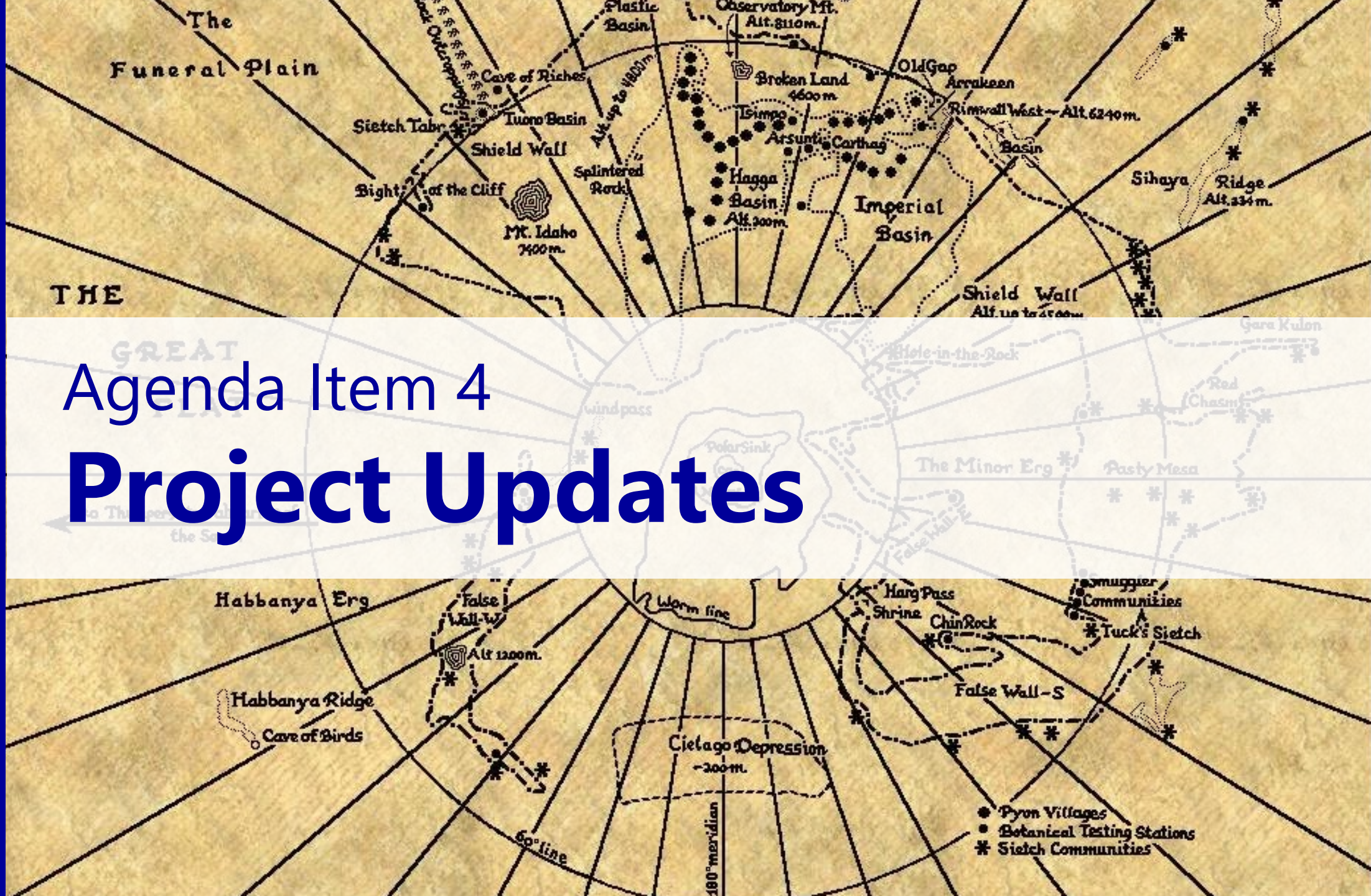
- 1 ) Call to Order
- 2 ) Approve Today's Meeting Agenda
- 3 ) Approve Minutes from last meeting on October 26, 2023  
Minutes are available at [metrogis.org](https://metrogis.org)

**Tanya: Review action items from last meeting**





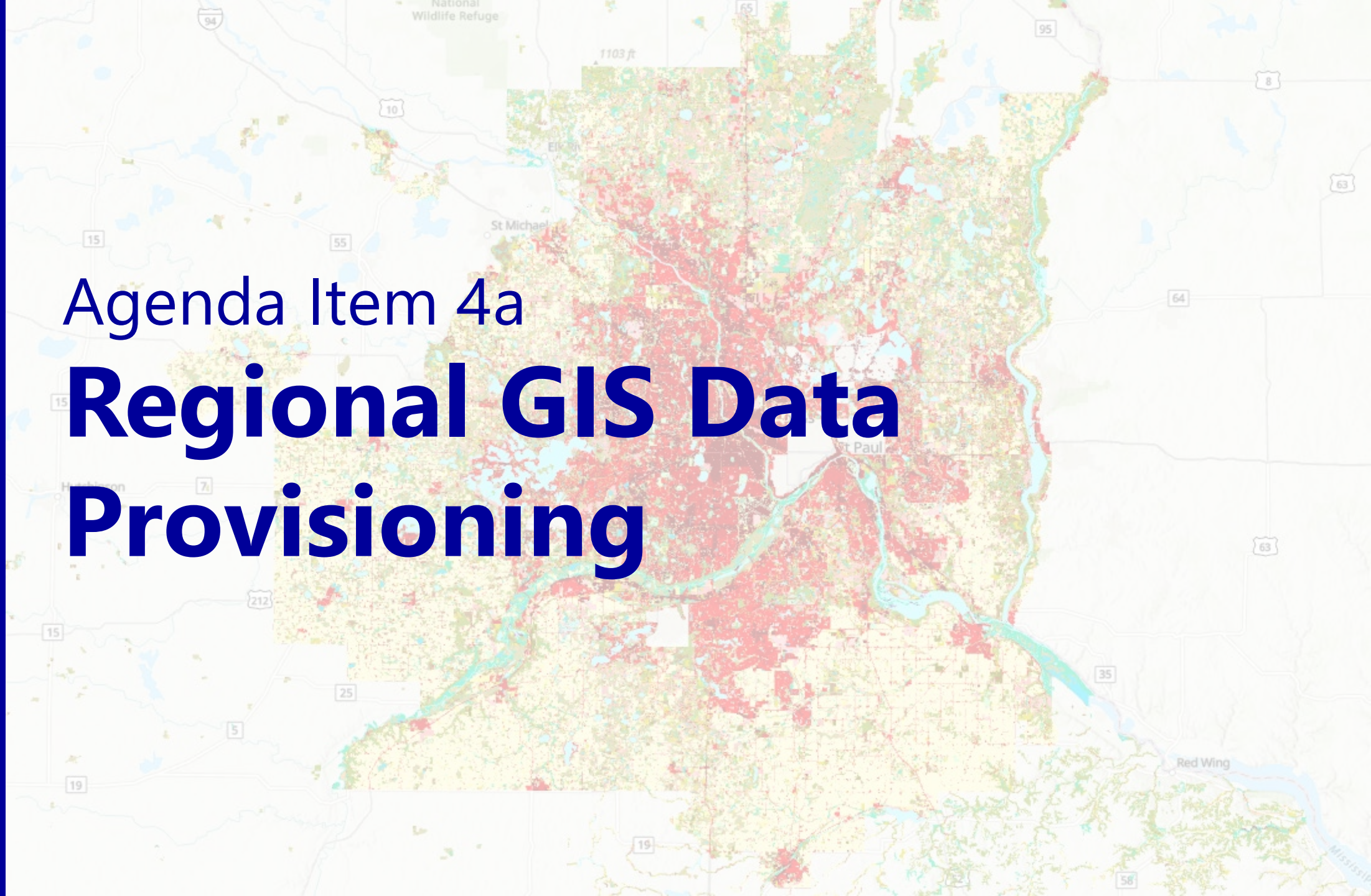
# Agenda Item 4 Project Updates



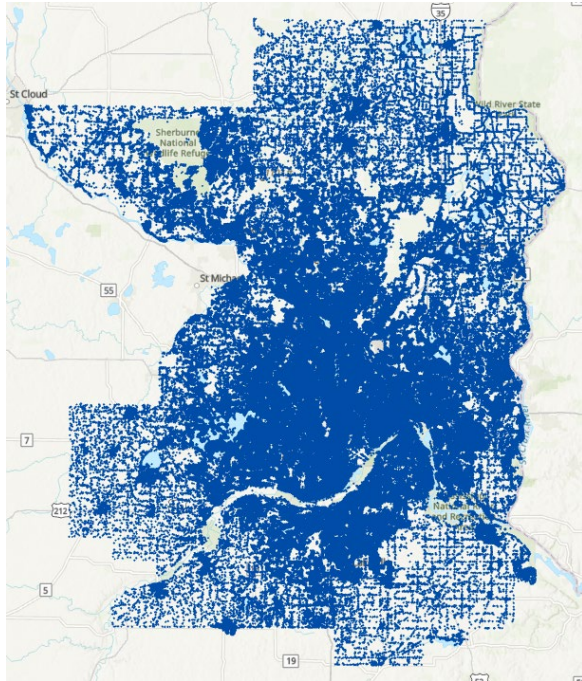


Agenda Item 4a

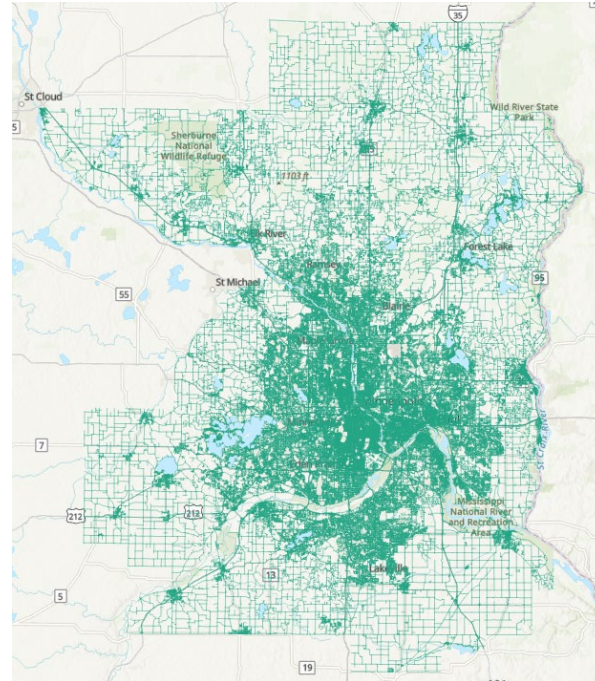
# Regional GIS Data Provisioning



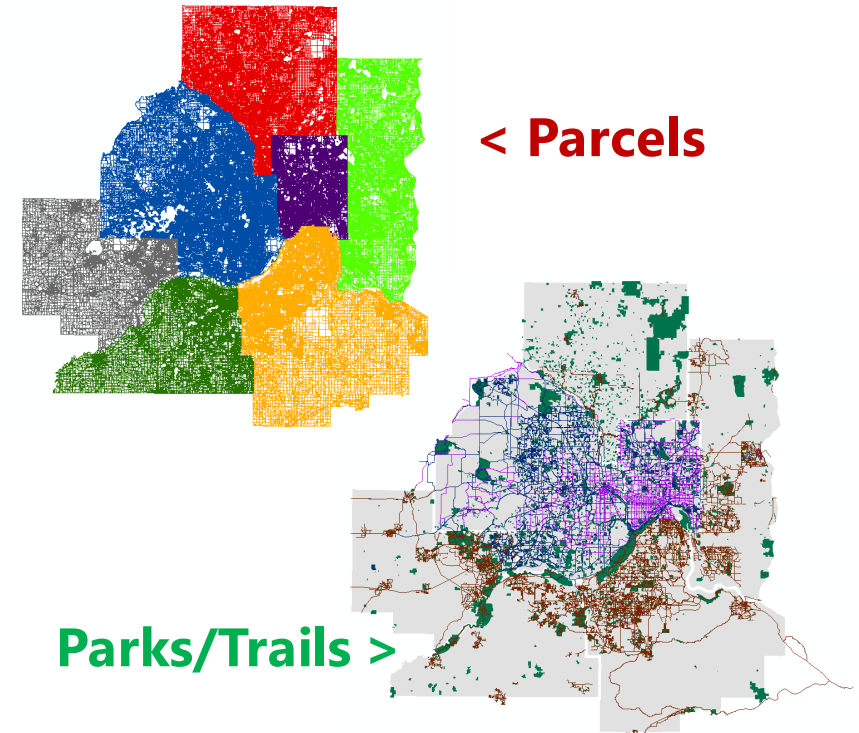
# Key function of MetroGIS: Regional Datasets



Address points



Road centerlines



# Key function of MetroGIS: Regional Datasets

**m MINNESOTA**  
GEOSPATIAL COMMONS

Categories Organizations Resources News Help About

Organizations / MetroGIS / Metro Address Points Dataset

**Metro Address Points Dataset**

Followers: 3

Organization: MetroGIS

**MetroGIS**  
MetroGIS is a regional geographic information systems initiative serving Minnesota's Minneapolis-St Paul metropolitan area. It provides a regional forum to promote and... read more

**Metro Address Points Dataset**

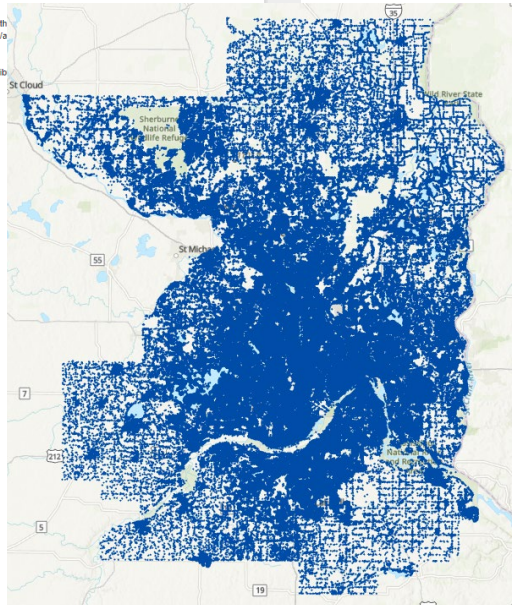
This dataset is a compilation of address point data from metro area address authorities, which are predominantly cities. The dataset is intended to contain a point location and the official address (as defined by the address authority) for all occupiable units and any other official addresses within the jurisdictional boundary of each address authority. A number of other attributes are available in the dataset, but may not be populated by some address authorities.

Metro area counties are playing a coordinative role to work with cities to create, maintain and aggregate address points. Currently this dataset contains points for all Seven Metropolitan Counties as well as participating bordering counties.

Some jurisdictions in this dataset contain parcel points and not complete address points. See Completeness in Section 2 of this metadata for more information.

The data used in this aggregated dataset are compliant with the <http://www.mngeo.state.mn.us/committee/standards/address/>

For specific questions regarding centerline alignments or attrib: Anoka: <https://www.anokacounty.us/315/GIS>  
Carver: [gis@co.carver.mn.us](mailto:gis@co.carver.mn.us)  
Chicago: [gisservices@chisagocountymn.gov](mailto:gisservices@chisagocountymn.gov)  
Dakota: [gis@co.dakota.mn.us](mailto:gis@co.dakota.mn.us)  
Hennepin: [gis.info@hennepin.us](mailto:gis.info@hennepin.us)  
Isanti: [Nate.Kirkvold@co.isanti.mn.us](mailto:Nate.Kirkvold@co.isanti.mn.us)  
Ramsey: [RCGISMetaData@co.ramsey.mn.us](mailto:RCGISMetaData@co.ramsey.mn.us)  
Scott: [gis@co.scott.mn.us](mailto:gis@co.scott.mn.us)  
Sherburne: [gis@co.sherburne.mn.us](mailto:gis@co.sherburne.mn.us)  
Washington: [gis@co.washington.mn.us](mailto:gis@co.washington.mn.us)



**m MINNESOTA**  
GEOSPATIAL COMMONS

Categories Organizations Resources News Help About

Organizations / MetroGIS / Road Centerlines ...

**Road Centerlines (Geospatial Advisory Council Schema)**

Followers: 1

Organization: MetroGIS

**MetroGIS**  
MetroGIS is a regional geographic information systems initiative serving Minnesota's Minneapolis-St Paul metropolitan area. It provides a regional forum to promote and... read more

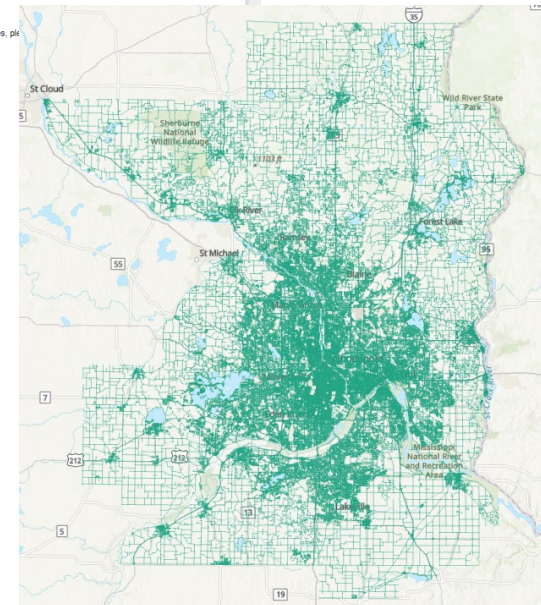
**Road Centerlines (Geospatial Advisory Council Schema)**

This dataset was created by a joint collaborative project involving the technical and managerial GIS staff from the ten Metropolitan Counties (Anoka, Carver, Chicago, Dakota, Hennepin, Isanti, Ramsey, Scott, Sherburne and Washington), the Metropolitan Emergency Services Board, MetroGIS and the Metropolitan Council. Core needs this dataset are intended to satisfy include:

- Vehicular routing;
- Address geocoding;
- Next Generation 911 call routing and location validation;
- Emergency services dispatching;
- Linear referencing uses;
- Cartographic representation of road features;

For specific questions regarding centerline alignments or attributes, please contact:

Anoka: <https://www.anokacounty.us/315/GIS>  
Carver: [gis@co.carver.mn.us](mailto:gis@co.carver.mn.us)  
Chicago: [gisservices@chisagocountymn.gov](mailto:gisservices@chisagocountymn.gov)  
Dakota: [gis@co.dakota.mn.us](mailto:gis@co.dakota.mn.us)  
Hennepin: [gis.info@hennepin.us](mailto:gis.info@hennepin.us)  
Isanti: [Nate.Kirkvold@co.isanti.mn.us](mailto:Nate.Kirkvold@co.isanti.mn.us)  
Ramsey: [RCGISMetaData@co.ramsey.mn.us](mailto:RCGISMetaData@co.ramsey.mn.us)  
Scott: [gis@co.scott.mn.us](mailto:gis@co.scott.mn.us)  
Washington: [gis@co.washington.mn.us](mailto:gis@co.washington.mn.us)



# Regional Datasets

## Four Priorities:

- 1 – Integrate our data into external systems
- 2 – Maintain and improve validation and standard adherence
- 3 – Documentation (processes and workflows)
- 4 – Identify roadblocks to long term sustainability



# Regional Data

## Four Priorities:

- 1 – Integrate our data
- 2 – Maintain and improve
- 3 – Documentation
- 4 – Identify roadblock

ns  
standard adherence  
(policies)  
sustainability





# Regional Datasets

## 1 – Integrate our data into external systems

### External Platform Publishing

*Google*

*ESRI Community Base Map*

*Open Street Map*

*HERE*

*Etc.*



***MetCouncil able to contribute to ESRI Geocoding Service  
GAC Work Group 'CANDO' – External Publishing***



# Regional Datasets

## 2 – Maintain and improve validation and standard adherence

**Maintenance of current practices and actions**

**MOA/Contract renewal (roles)**

**Edits and revisions as needed**

**Usage for/Connectivity to NG9-1-1**

**Availability of high-quality data**

**2023: New validation scripts (Python 3)**

**Pro-active report on the regional process**

**Logs and reports on when submittals are made**



# Regional Datasets

## 3 – Documentation

**Preserve knowledge our work**

**Document the “what/why/how”**

**Resource for new staff/new participants**

**Processes and workflows**



# Road centerlines (5 years old...)



Supplemental information on Geocoding Side Elements



## Actual (Assigned) Vs. Theoretical Addresses

After carrying both actual (assigned) and theoretical address ranges in early draft versions of the standard, the MRCC opted to drop theoretical ranges and carry only the **actual (assigned)** address ranges.

Under state statute (§412.221, Sub. 18) only cities are vested with the ability to assign legal addresses, so any address range within a city (incorporated municipality) will reflect the ranges they have legally assigned to their street or road segment.

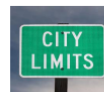
In townships and un-organized areas, there remains an obvious need for address ranges. County governments generally hold sway in these areas and often assign addresses out of necessity. When a city annexes an area of an adjoining township, they may renumber that segment of road which now fall into the city to match their existing road system. This happens with some frequency in the metro counties.

**Theoretical ranges** differ from actual ranges in that they are mathematically interpolated based on their location along a given street segment line (e.g. a point in the exact middle of a segment with a theoretical range of 0 to 100 would have a value of '50').



## What is the difference between CTU and a Postal Community?

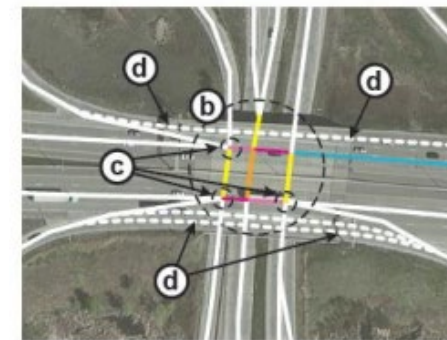
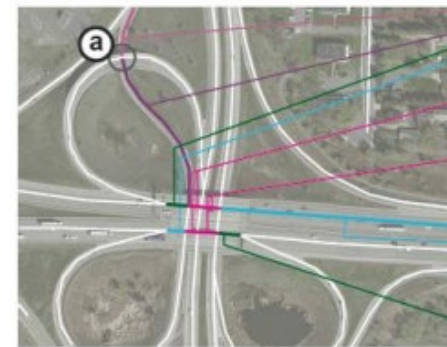
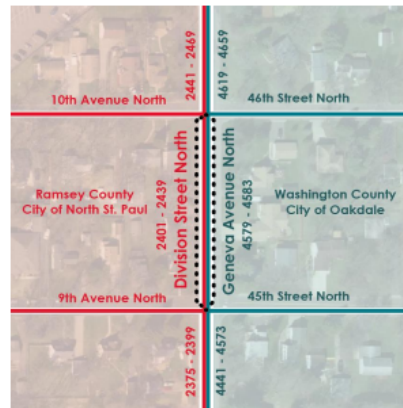
**CTU\_L** or **CTU\_R** is the name of the city, township or unorganized territory which is on the left or right side of a given street segment. **Postal Community (POSTCOMM\_L or POSTCOMM\_R)** is the name of the city of the mailing address as defined by the U.S. Postal Service. These two fields may be different since the USPS allows the use of more than one city name for some ZIP codes.



## Coincident Example:

The map at right illustrates a standard example for where and how the 'coincident exclusive' technique is used. In this example, a road forms the boundary between Ramsey County (left side in red) and Washington County (right side, in teal).

In Ramsey County, the street is known as **Division Street North**, while in Washington County, the street is known as **Geneva Street North** (to make matters more interesting, a portion of this road is also coincident with State Highway 120, which would be carried as an alternate street name). Also shown are the address ranges for each segment, which differ between the two counties (in Ramsey County, the ranges are in the 2300s to the 2400s, while in Washington County they are in the 4400s to the 4600s).



ELEV_FROM	ELEV_TO
0	-1
ELEV_FROM	ELEV_TO
-1	0

Westbound

ELEV_FROM	ELEV_TO
1	0

Eastbound

ELEV_FROM	ELEV_TO
0	1

ELEV_FROM	ELEV_TO
1	1
ELEV_FROM	ELEV_TO
1	1

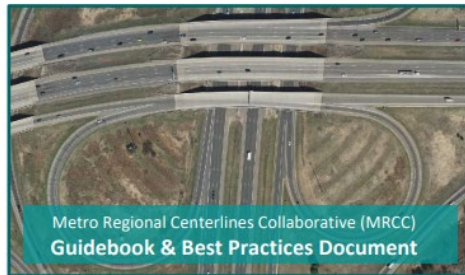
Westbound

ELEV_FROM	ELEV_TO
0	1

Eastbound

ELEV_FROM	ELEV_TO
1	0

- a** Roads below grade will use negative values;
- b** Each intersection of lines creates separate segments;
- c** Best practice: On/off ramps should connect to minimize small segments
- d** Best practice: Connectivity of the ramp to the main road is of more importance for routing and maintenance than the accurate representation of the shape of the ramp;



Published: May 31, 2018 (v. 1.0)



Prepared for the partner agencies of the Metro Regional Centerline Collaborative (MRCC)

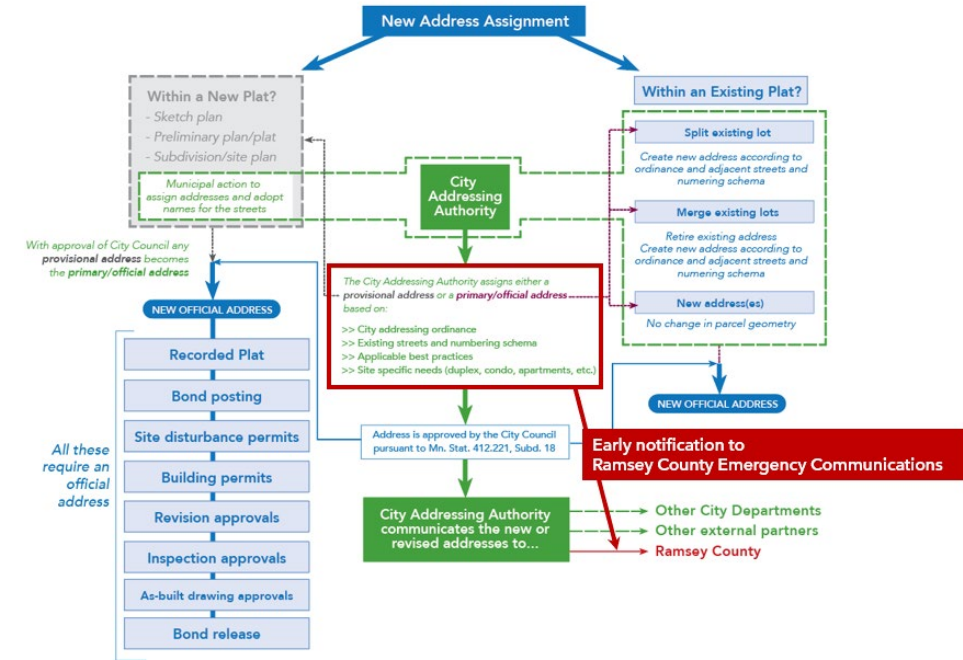
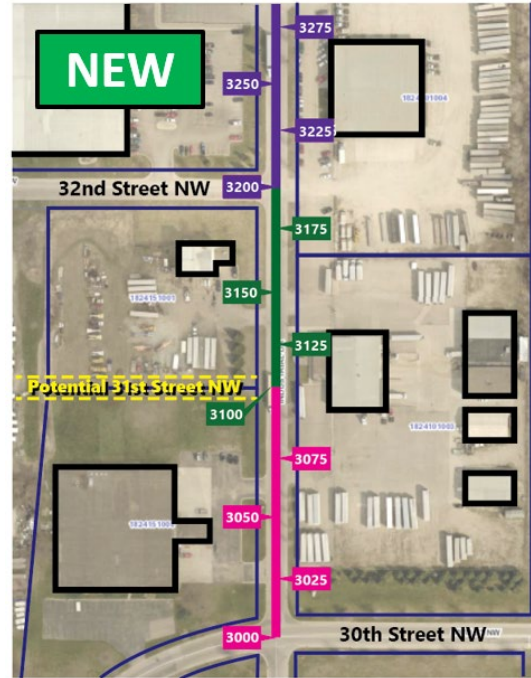
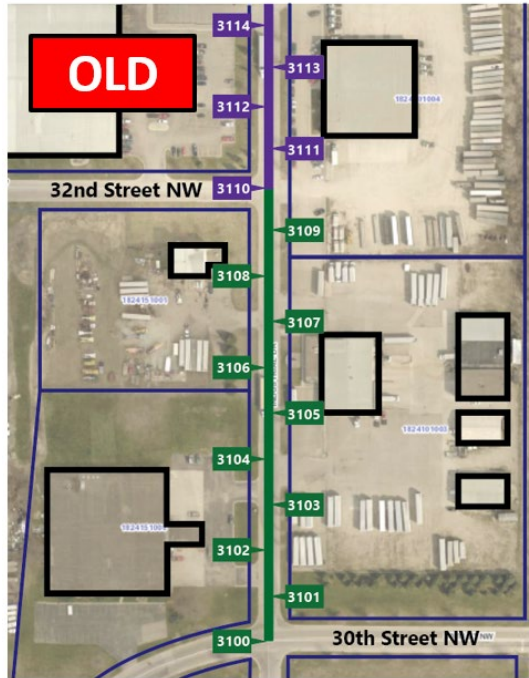
Anoka County  
Dakota County  
Ramsey County  
Washington County  
Metropolitan Emergency Service Board

Carver County  
Hennepin County  
Scott County  
Metropolitan Council  
MetroGIS



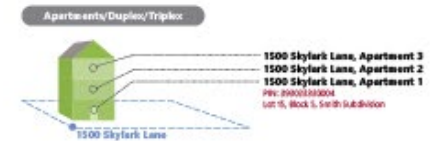
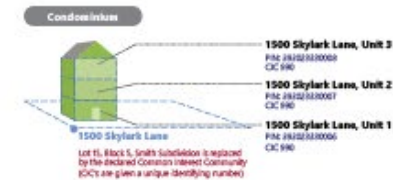
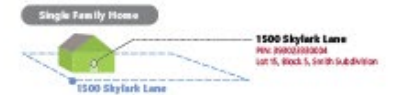
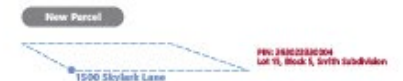
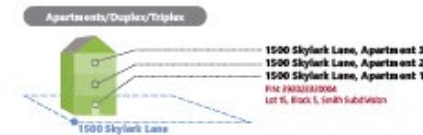
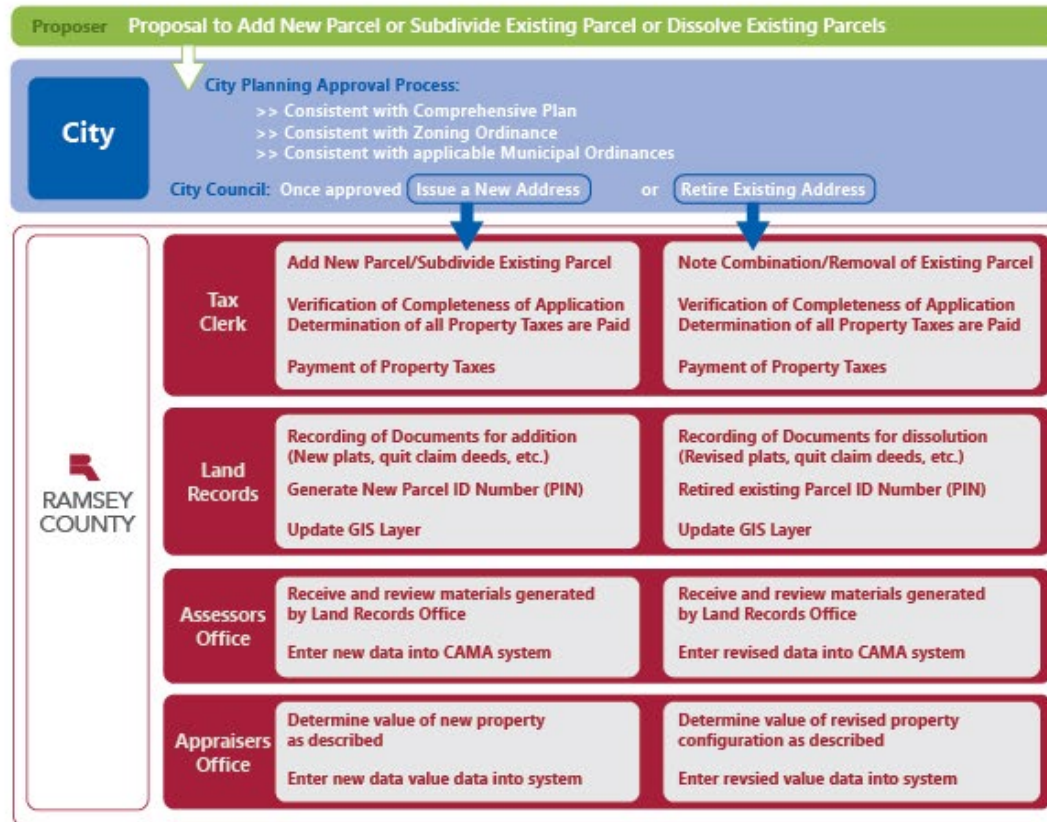
# Addressing

Process, authority, data, situations, etc.



# Addressing

## Process, authority, data, etc.



**Parcel Combination**

Beginning point: two separate parcels under two separate owners



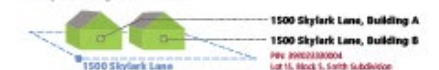
Removal of one property



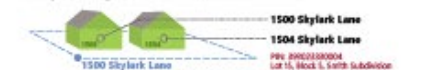
Resulting property: one parcel in single ownership spread across two lots



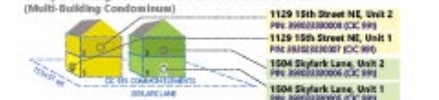
**Multiple Buildings: Same Address**



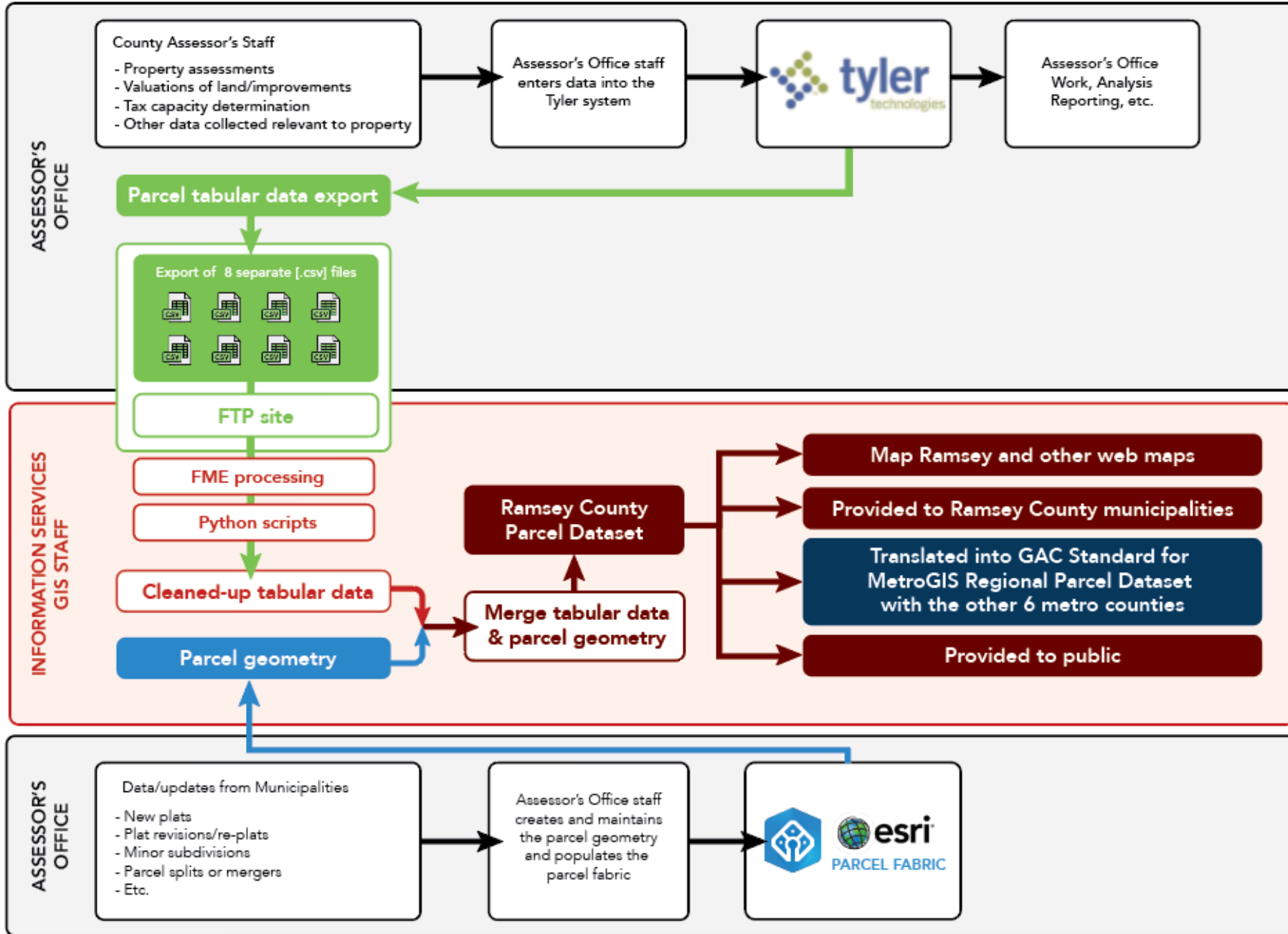
**Multiple Buildings: Different Address-Same Orientation**

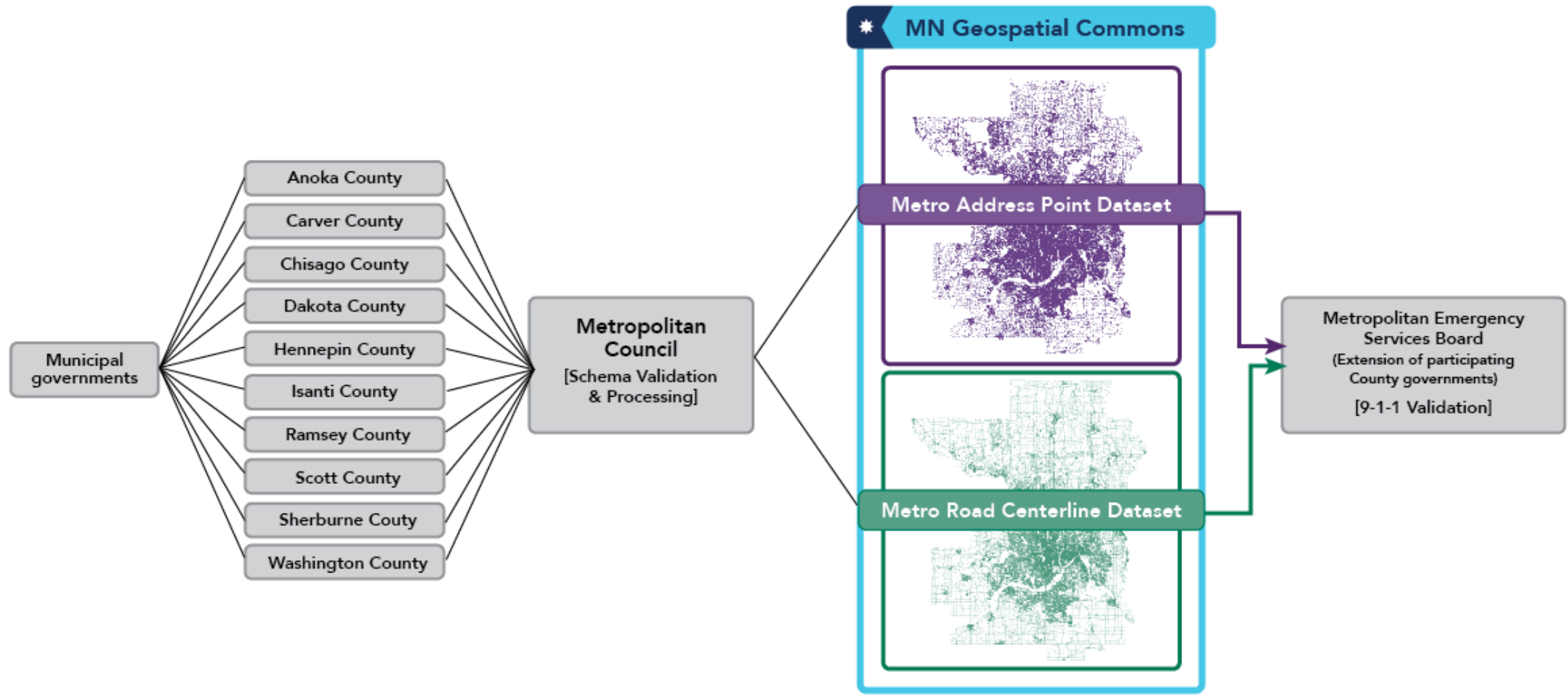


**Multiple Buildings: Different Address-Different Orientation (Multi-Building Condominiums)**

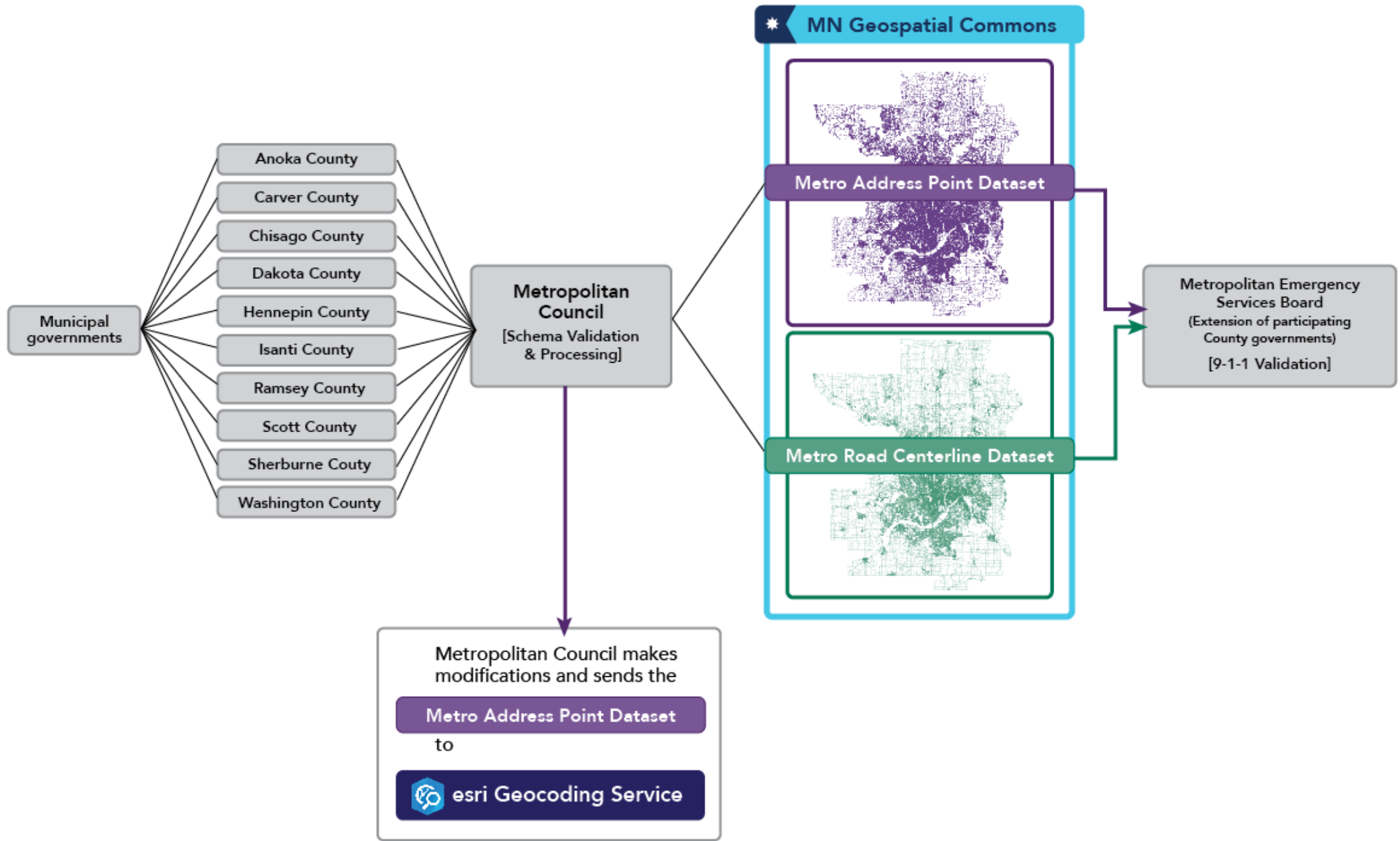


# Ramsey County Parcel Data - Workflow Process









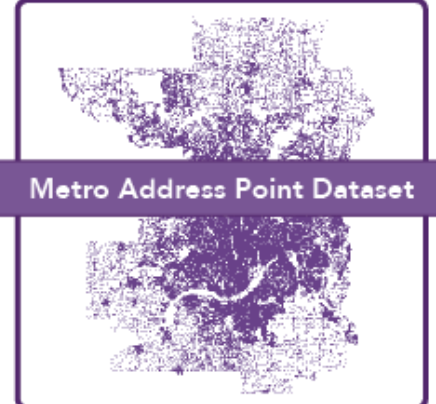
Municipal governments

- Anoka County
- Carver County
- Chisago County
- Dakota County
- Hennepin County
- Isanti County
- Ramsey County
- Scott County
- Sherburne County
- Washington County

**Metropolitan Council**  
[Schema Validation & Processing]

Metropolitan Council makes modifications and sends the  
**Metro Address Point Dataset**  
to  
 **esri Geocoding Service**

**MN Geospatial Commons**

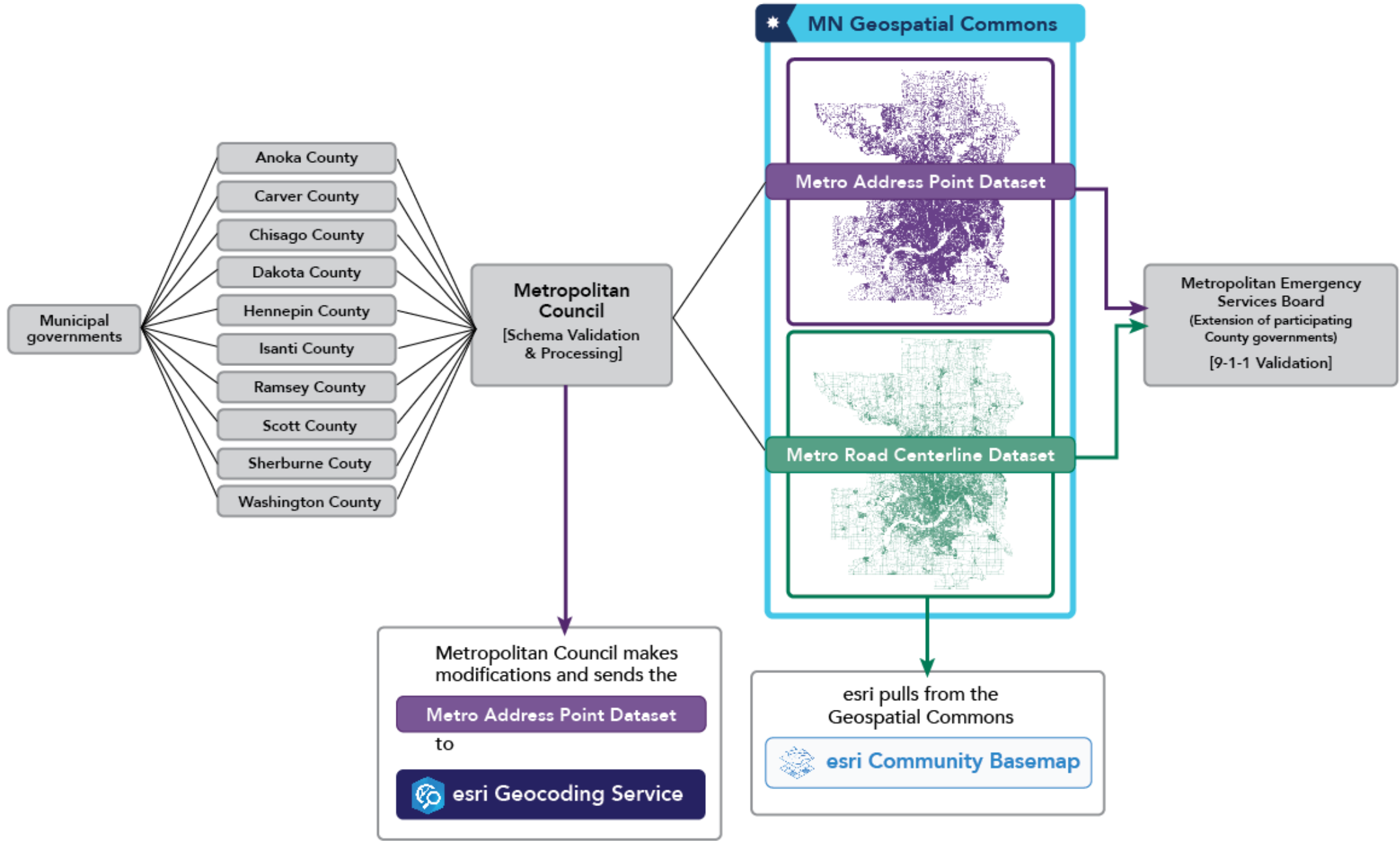


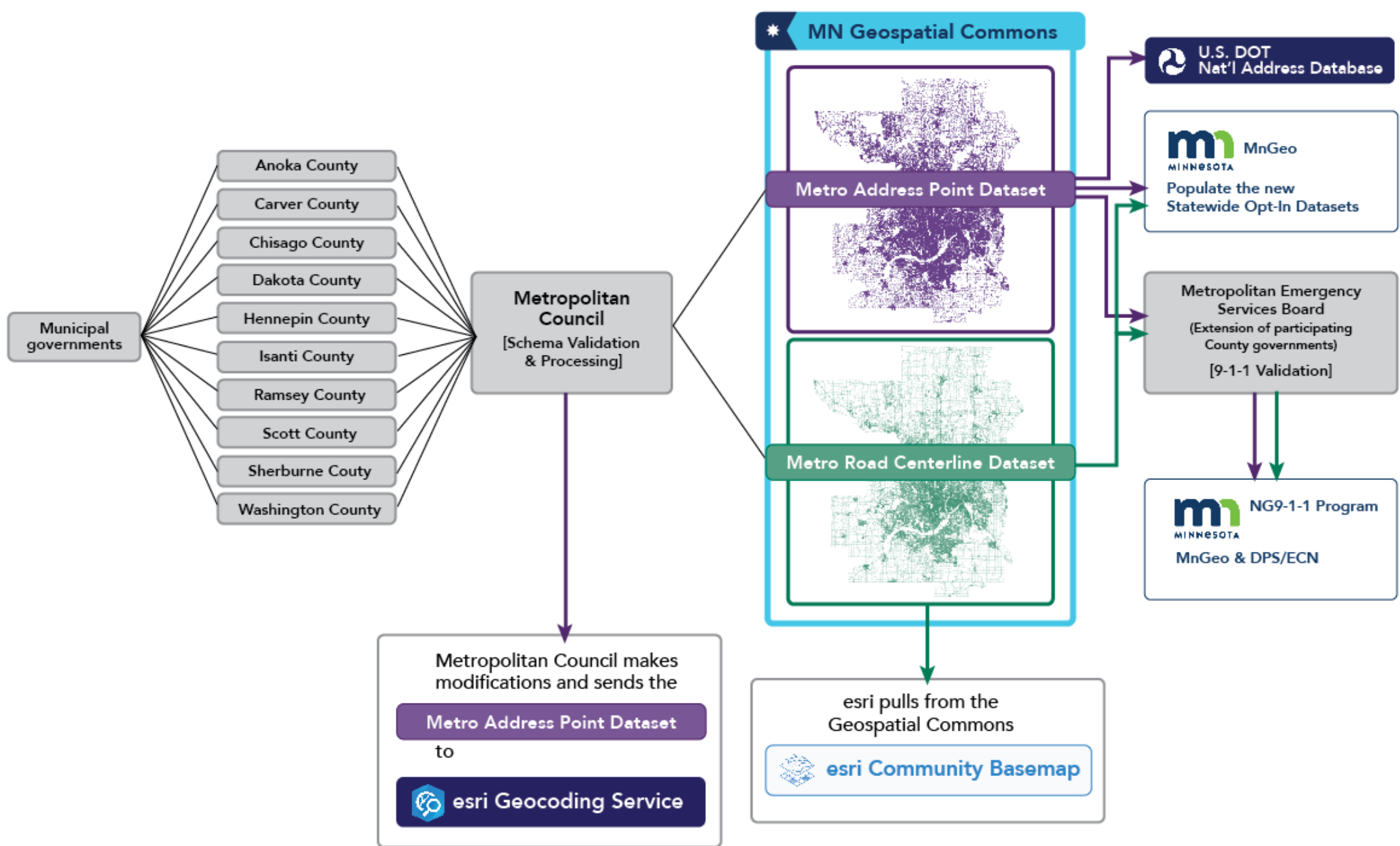
**Metro Address Point Dataset**

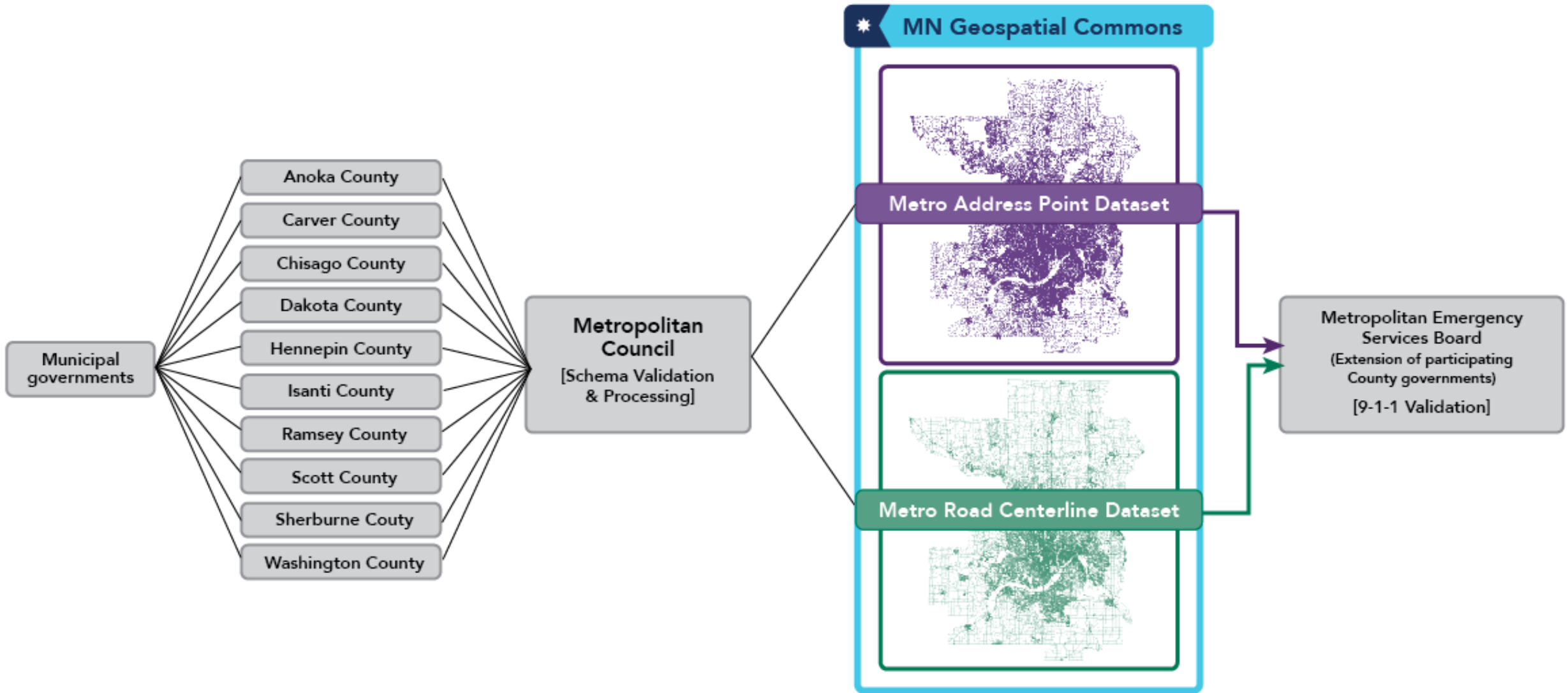


**Metro Road Centerline Dataset**

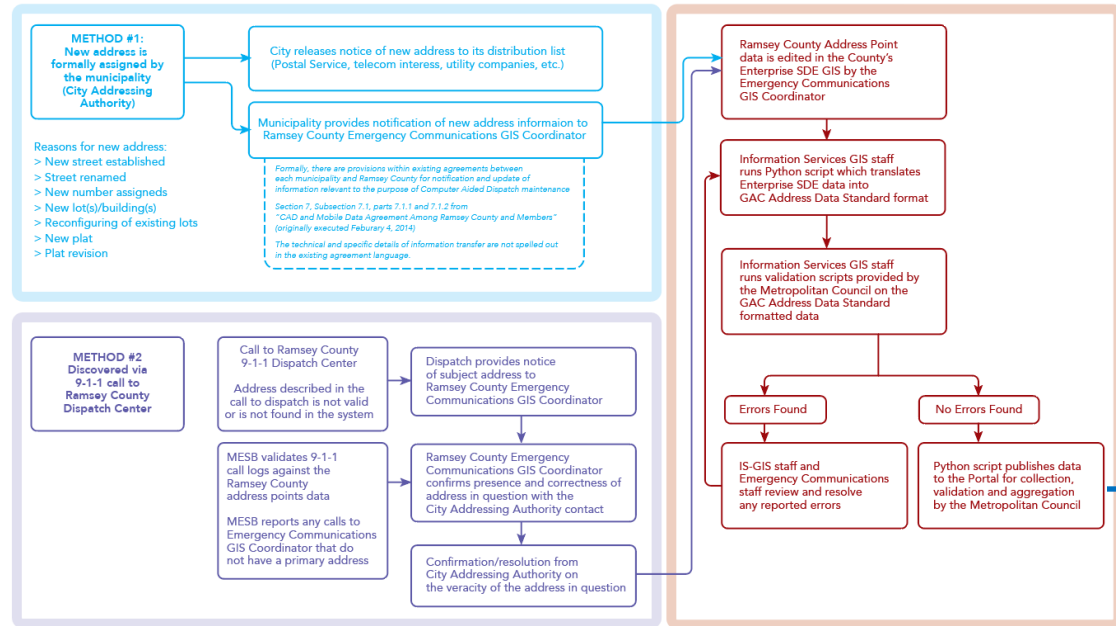
**Metropolitan Emergency Services Board**  
(Extension of participating County governments)  
[9-1-1 Validation]



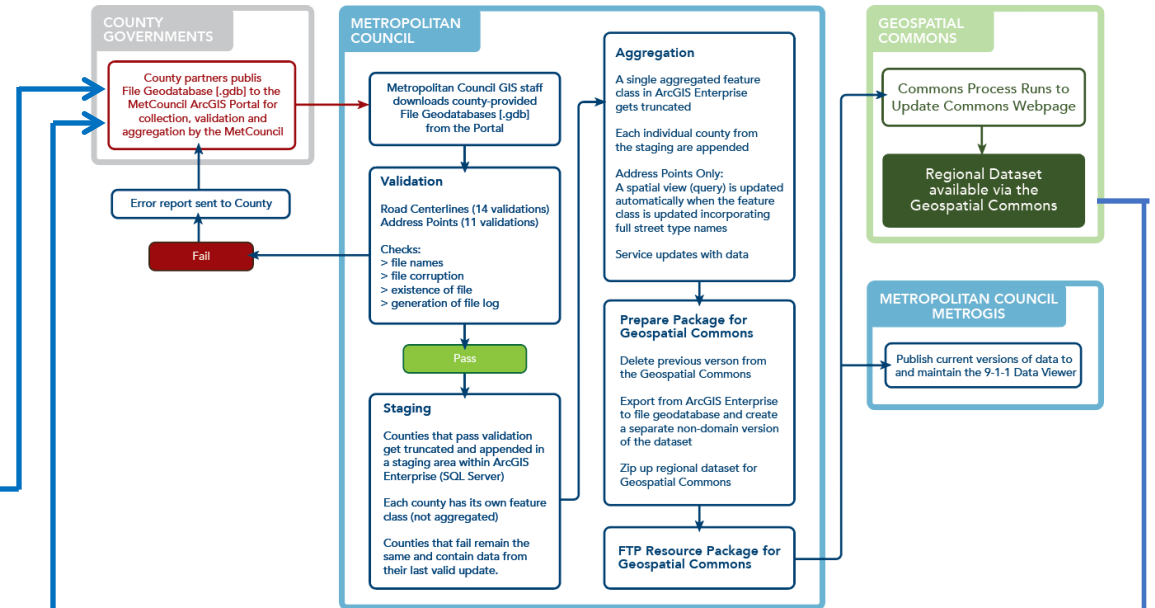




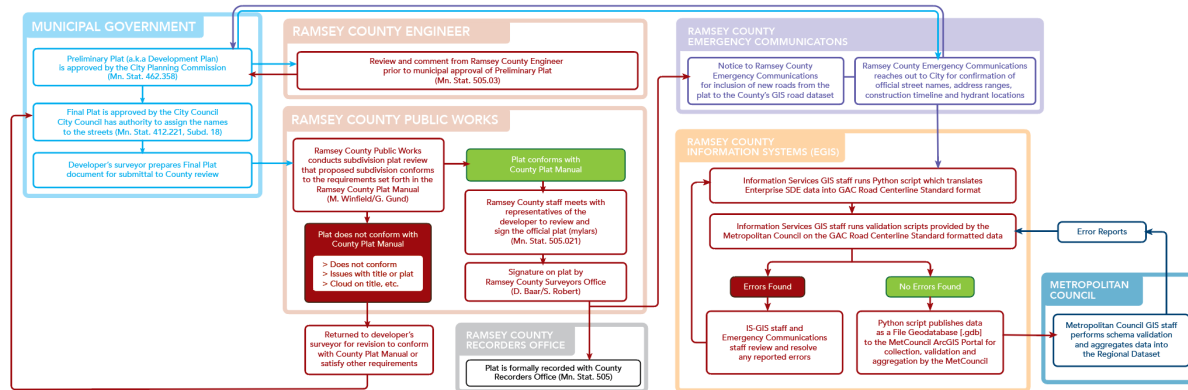
# CITY/COUNTY PROCESS - ADDRESS DATA



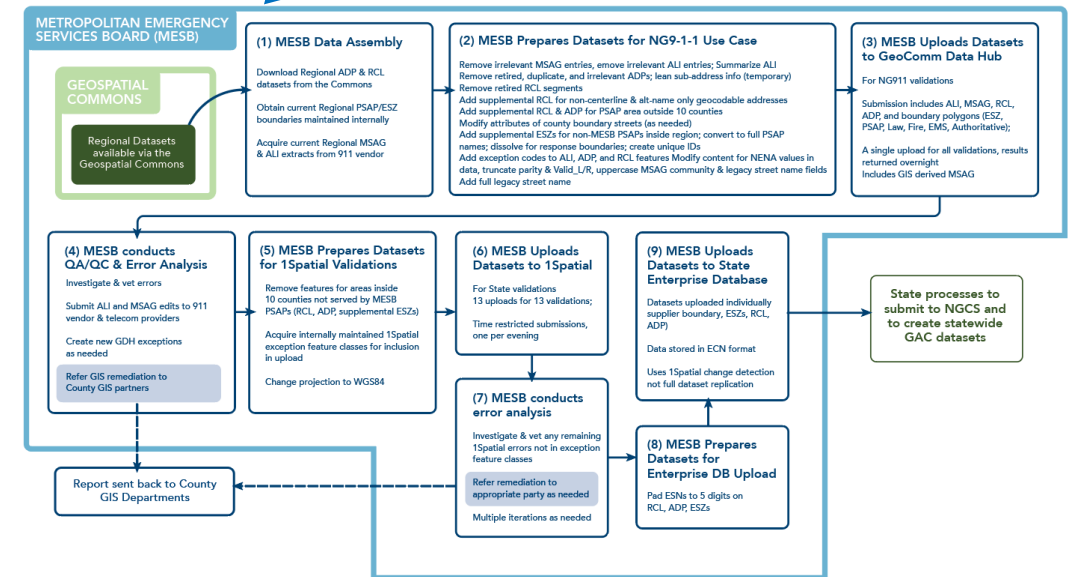
# MET COUNCIL PROCESS



# CITY/COUNTY PROCESS - ROAD CENTERLINE DATA



# MESB PROCESS



# Regional Datasets

## 4 – Identify Roadblocks

**What could impede continued production and availability of regional datasets?**

**Maintenance of MOA/Contract agreement**

**Prevent loss of knowledge (purpose, process, etc.)**

**Training, staff turnover, resources, etc.**



# Regional Datasets

## Four Priorities:

- 1 – Integrate our data into external systems
- 2 – Maintain and improve validation and standard adherence
- 3 – Documentation (processes and workflows)
- 4 – Identify roadblocks to long term sustainability



Agenda Item 4b

# LIDAR Update



MetroGIS™



# 4b - LIDAR Project Update

Preliminary data is downloadable from the National Map

<https://apps.nationalmap.gov/downloader/>

The screenshot shows the USGS National Map Downloader interface. The USGS logo is at the top left. The main navigation bar includes 'TNM Download (v2.0)', 'Help', 'Custom Views', 'Share Link', 'Contact Us', and 'topoBuilder'. Below this, there are tabs for 'Datasets', 'Products', and 'Cart'. A search bar is present with the text 'Find address or place'. The 'Advanced Search' section includes buttons for 'Search Products', 'Reset Map', 'Upload shapefile', and 'Upload KML'. The 'Map' section has checkboxes for 'US Topo' and 'Historical Topographic Maps'. The 'Data' section has checkboxes for 'Boundaries - National Boundary Dataset', 'Elevation Products (3DEP)', and 'Elevation Source Data (3DEP) - Lidar, IfSAR'. Under 'Elevation Source Data (3DEP) - Lidar, IfSAR', there are subcategories: 'Select All', 'DEM Source (OPR)', 'Ifsar Digital Surface Model (DSM)', 'Ifsar Orthorectified Radar Image (ORI)', and 'Lidar Point Cloud (LPC)'. The 'Lidar Point Cloud (LPC)' checkbox is checked. A map of the Minneapolis area is shown on the right, with a red dot indicating the location of Saint Paul. The map includes labels for various counties (Hennepin, Ramsey, Washington, Scott, Dakota) and cities (Minneapolis, Saint Paul, Oakdale, Burnsville, Apple Valley, Lakeville). The map also shows major roads (Interstates 94, 35W, 55, 694, 101, 13, 52, 35) and water bodies (Mississippi River, Crow River, White Bear Lake, Lake Saint Croix, Vermillion River, Minnesota River, Silver Creek, Bevens Creek, Calder Creek, Lower Prior Lake, Spring Lake, North Lake, Sturgeon Lake). The map includes a 'Show Map Index' button and a search bar. The zoom level is 10 and the scale is 577791. The coordinates are -93.877785, 44.986215.

**Elevation Source Data (3DEP)**

**Lidar Point Cloud (LPC)**

National Land Cover Database (NLCD) data can be downloaded at the MRLC website.



# Minnesota Lidar Hub

Search...

Learn about lidar and the need for a new lidar collection in Minnesota. This website provides resources, plans to acquire and support lidar, and current status information for the Minnesota Lidar Plan. The website is developed and maintained by the Geospatial Advisory Council 3D Geomatics (3DGeo) Data Acquisition Committee and facilitated and supported by the Minnesota Geospatial Information Office (MnGeo), an office of Minnesota IT Services (MNIT).

## Events / News

Email [lidar@state.mn.us](mailto:lidar@state.mn.us) for meeting invitation(s) when available. Please indicate which meeting(s) you would like to attend.

3D Geomatics Committee Recognized for team-managed, partner-based lidar acquisition at Geo Week. To learn more, check out this brief [one-page information sheet](#).

3DGeo's GIS/LIS presentation recording is now available for viewing: [Past - Present - Future: A 3D Geomatics Committee Update on Minnesota's Lidar Plan Presentation Recording](#).

## Featured Resources



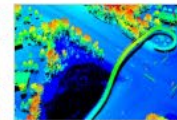
### Minnesota's Lidar Story

An introduction to lidar, how it is used in Minnesota, and the Minnesota Lidar Plan.



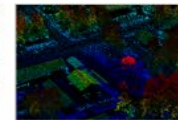
### Minnesota Lidar Plan (PDF)

This plan outlines the need for a new lidar collection in Minnesota, and the path to...



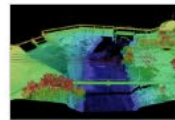
### Past - Present - Future: A 3D Geomatics Commit...

Minnesota Lidar Plan Panel Discussion at MN GIS/LIS 2021 Sean Vaughn, Gerry Sjerven,...



### Why 3DGeo Supports Quality Level 1

The Geospatial Advisory Council's 3DGeo Acquisition Workgroup explains its suppo...



### Lidar for County Government

How counties benefit from lidar and find returns on investments.



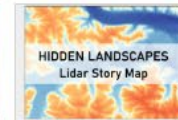
### Lidar Elevation Data for Minnesota: 2008-2012

Resources from the 2008-2012 Lidar Elevation Data for Minnesota project.



### MnTOPO

MnTOPO is a web application for viewing, printing and downloading high resolution...



### HIDDEN LANDSCAPES Lidar Story Map

### Hidden Landscapes Public

Hidden Landscapes tell the story of the 2020 Goodhue County high resolution Lidar...

<https://lidarhub-minnesota.hub.arcgis.com/>



MetroGIS™

Agenda Item 4c

# External Platform Publishing



# External Platform Publishing

Metro regional datasets made available to/integrated with/published in:

- **ESRI Community Basemap**
- **Google Maps**
- **Open Street Map**
- **HERE**
- **Others as they emerge**



MetroGIS™



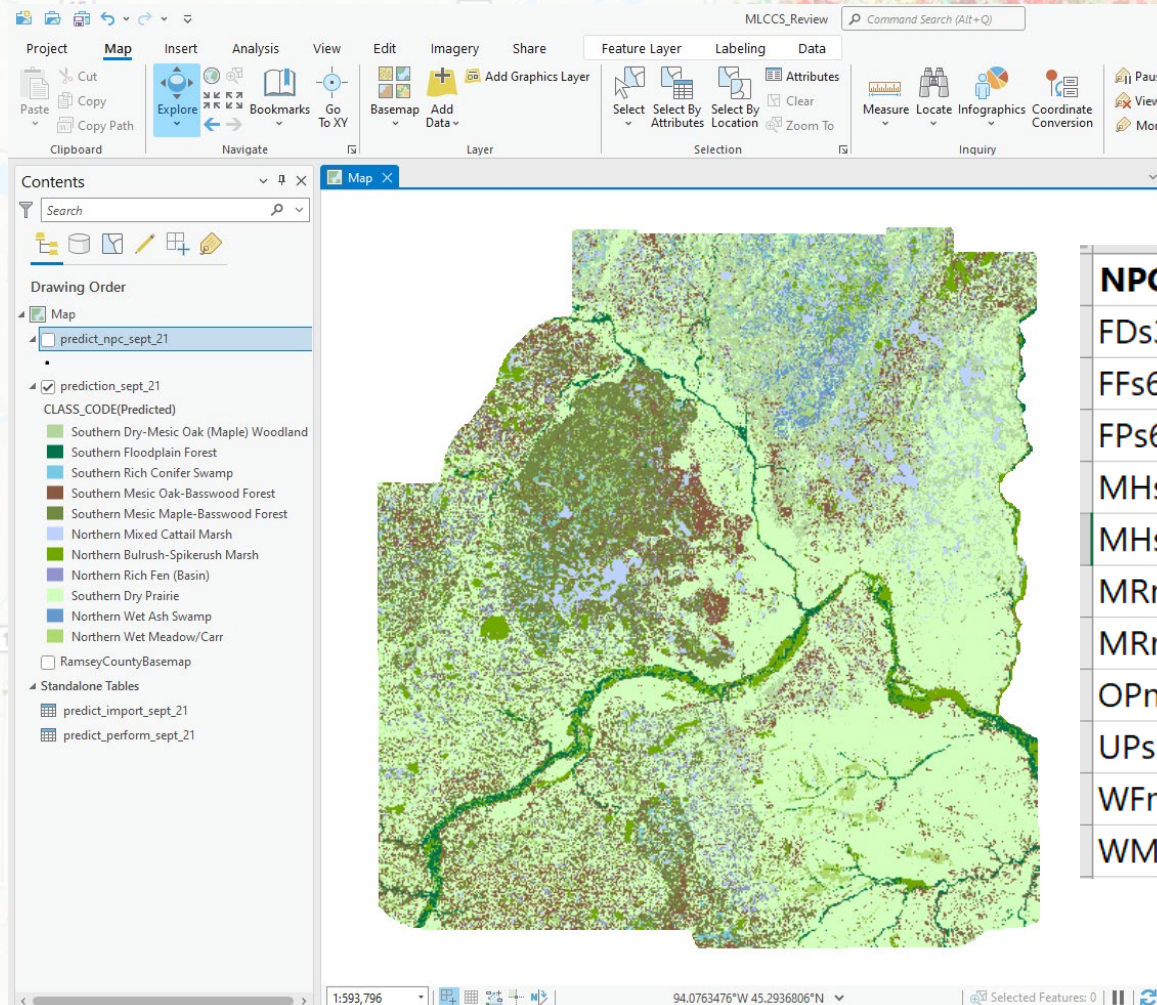
# Agenda Item 4d **MLCCS Project**



# MLCCS Project

## Minnesota Land Cover Classification System

### MetroGIS provided \$26,500 in 2023



<b>NPC class code</b>	<b>NPC Class</b>
FDs37	Southern Dry-Mesic Oak (Maple) Woodland
FFs68	Southern Floodplain Forest
FPs63	Southern Rich Conifer Swamp
MHs38	Southern Mesic Oak-Basswood Forest
MHs39	Southern Mesic Maple-Basswood Forest
MRn83	Northern Mixed Cattail Marsh
MRn93	Northern Bulrush-Spikerush Marsh
OPn92	Northern Rich Fen (Basin)
UPs13	Southern Dry Prairie
WFn55	Northern Wet Ash Swamp
WMn82	Northern Wet Meadow/Carr

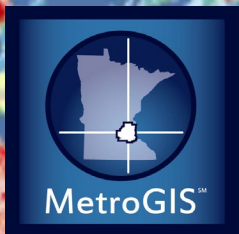


# MLCCS Project

## Minnesota Land Cover Classification System

### Training Layers used in the model

variable	Full name	Source
aspect_group	Aspect in four groups - north (315 to 45), east (45 to 135), south (135 to 225), west (225 to 315)	from the aspect_real layer
aspect_real	Aspect in real numbers	Processed from 30m DEM (Aspect SA tool in ArcGIS)
canopy_height	Canopy height, LiDAR derived	DNR Forestry
chili	Continuous heat-insolation load index	<a href="https://developers.google.com/earth-engine/datasets/catalog/CSP_ERGo_1_0_US_CHILI">https://developers.google.com/earth-engine/datasets/catalog/CSP_ERGo_1_0_US_CHILI</a>
curvature	curvature of raster surface	Processed from 30m DEM (Aspect SA tool in ArcGIS)
distRiver	Distance to nearest flowing water body	Calculated with the distance tool in ArcGIS 10.8 from the DNR river and stream centerline
geomorphic	Geomorphology of Minnesota - Geomorphic Association	University of Minn. Duluth, Minnesota Geological Survey, and MN DNR
glacial_phase	Geomorphology of Minnesota - Glacial Phase	University of Minn. Duluth, Minnesota Geological Survey, and MN DNR
landsurfacetemp_2022_low	Land Surface Temperature 2022, Twin Cities -	Metropolitan Council
NdwiDifffMayToSeptL8	Seasonal wetness: Normalized difference water index of May-Sept	
nlcd_2019	National Land Cover Dataset (NLCD) from 2019	<a href="https://www.usgs.gov/centers/eros/science/national-land-cover-database">https://www.usgs.gov/centers/eros/science/national-land-cover-database</a>
nwi_veg_int_0	National Wetlands Inventory (NWI), Simplified Plant Community Classification	<a href="https://www.dnr.state.mn.us/eco/wetlands/nwi_proj.html">https://www.dnr.state.mn.us/eco/wetlands/nwi_proj.html</a>
riparian_floodplain	FEMA Floodplain and Floodway combined with DNR streams intersecting flat areas	<a href="https://www.fema.gov/flood-maps">https://www.fema.gov/flood-maps</a>
sedimentary	Geomorphology of Minnesota - Sedimentary Association	University of Minn. Duluth, Minnesota Geological Survey, and MN DNR
slope_percent	landform slope, percent	Processed from 30m DEM (Aspect SA tool in ArcGIS)
soil_texture_simple	SSURGO soils - Surface Texture, simplified to 13 classes	Natural Resources Conservation Service (NRCS) - <a href="https://www.nrcs.usda.gov/resources/">https://www.nrcs.usda.gov/resources/</a>
soils_grigal_relief	Cummins Grigal Soils of Minnesota - DESC attribute	U of M, Dept. of Soil, Water and Climate
soils_grigal_texture	Cummins Grigal Soils of Minnesota - TEXT_1 attribute	U of M, Dept. of Soil, Water and Climate
soils_grigal	Cummins Grigal Soils of Minnesota - GEISSOIL_K attribute	U of M, Dept. of Soil, Water and Climate
soils_hydric	SSURGO soils - HydrC Rating attribute	Natural Resources Conservation Service (NRCS) - <a href="https://www.nrcs.usda.gov/resources/">https://www.nrcs.usda.gov/resources/</a>
soils_order	USDA STATSGO - Dominant Soil Orders	<a href="https://www.sciencebase.gov/catalog/item/5748b4cae4b07e28b664dda4">https://www.sciencebase.gov/catalog/item/5748b4cae4b07e28b664dda4</a>
soils_orgmatter	SSURGO soils - OrgMatter attribute	Natural Resources Conservation Service (NRCS) - <a href="https://www.nrcs.usda.gov/resources/">https://www.nrcs.usda.gov/resources/</a>
soils_slope_group	SSURGO soils - Slope, reclass to 5 groups	Natural Resources Conservation Service (NRCS) - <a href="https://www.nrcs.usda.gov/resources/">https://www.nrcs.usda.gov/resources/</a>
solar_area	Area Solar Radiation - watt hours per square meter	Processed from 30m DEM (Aspect SA tool in ArcGIS)
spring_ndvi	Normalized difference vegetation index for spring	Processed from Landsat 8 : <a href="https://developers.google.com/earth-engine/datasets/catalog/">https://developers.google.com/earth-engine/datasets/catalog/</a>
summer_ndvi	Normalized difference vegetation index for summer	Processed from Landsat 8 : <a href="https://developers.google.com/earth-engine/datasets/catalog/">https://developers.google.com/earth-engine/datasets/catalog/</a>
topo_landform	Geomorphology of Minnesota - Topographic Expression	University of Minn. Duluth, Minnesota Geological Survey, and MN DNR
tpi100m	Topographic position index at 100 m	Processed from dep3_10m (Focal Statistics SA tool in ArcGIS)
um_mlccs_2013	MLCCS and Impervious Surface by Landsat and Lidar: 2013	U of M, Remote Sensing and Geospatial Analysis Laboratory





Agenda Item 5

# Filling Vacant Committee Seats





## January 2024 – Reach Out

### Academic Seat:

**Macalester College**  
**University of Saint Thomas**  
**Saint Paul College**  
**Saint Mary's University of Minnesota**

### Utilities Seat:

**Connexus Energy**  
**Xcel Energy**  
**CenterPoint**

### Non-Profit:

**MN Compass**

### Federal Government:

**MNRRRA**  
**USACOE**  
**USGS**



Agenda Item 6  
**GAC Update (Mayer/Slaats)**





# Minnesota Geospatial Advisory Council

**MetroGIS Coordinating Committee Meeting**

**January 25, 2024**

# 2024-25 Advisory Council Members

- **City, Twin Cities metro**
  - Dennis Tumberg, City of Chanhassen
- **City, Greater Minnesota**
  - Vacant
- **County, Twin Cities metro**
  - Victoria Reinhardt, Ramsey County
- **County, Greater Minnesota**
  - Christy Christensen, McLeod County
- **Regional government, Twin Cities metro**
  - Tanya Mayer, Met Council
- **Regional government, Greater Minnesota**
  - Jill Amundson, West Central Initiative
- **State agencies**
  - Kari Geurts, DNR
  - Ben Timerson, MnDOT
- **Federal government**
  - Jeff Bloomquist, Risk Management Agency, USDA
  - Mitch Bergeson, US Geological Survey
- **Tribal government**
  - Ryan Bonney, Shakopee Mdewakanton Sioux Community
- **Non-profit organizations**
  - Jessica Fendos, LOGIS
- **Business**
  - Kendis Scharenbroich, Pro-West & Associates
  - Gerry Sjerven, Minnesota Power
- **Higher Education**
  - Len Kne, U-Spatial / UMN Twin Cities
  - Stacey Stark, U-Spatial / UMN Duluth
  - Shana Crosson, U-Spatial, Research Computing, UMN Twin Cities
- **MetroGIS**
  - David Brandt, Washington County
- **MN GIS/LIS Consortium**
  - Leanne Knott, City of Red Wing
- **Surveyor**
  - Pat Veraguth, Douglas County
- **At-large**
  - Cory Richter, Ramsey County
  - Heather Albrecht, Hennepin County
  - Britta Maddox, Anoka County
- **Chief Geospatial Information Officer (ex-officio)**
  - Alison Slaats, MnGeo

## Updates from MnGeo

- October 31 - Governor Walz, Jack Dangermond and Alison Slaats presented to state agency senior leadership about using GIS to support One Minnesota plan, and data-driven decision making
- Technology Modernization Fund (TMF)
  - MNIT has funds for modernization of technology
  - MnGeo has applied for TMF funds to update the Geospatial Commons. Goals of the work are to upgrade architecture and refresh website. Web service-based architecture would result in more Commons resources with services.



# Open/Opt-In Data Update

## Open/Opt-In Data Update

Maps on the following slides will show the following info:

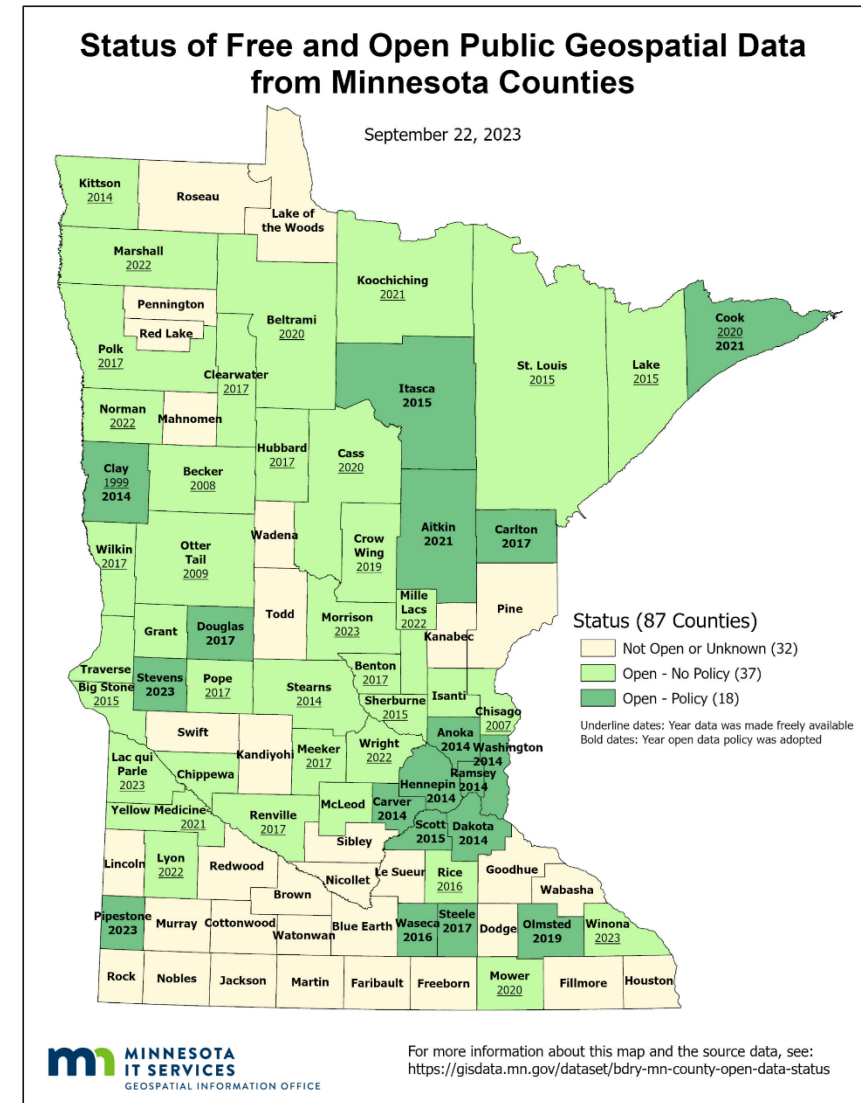
- **Open Data Counties:** Counties that share their data freely, on their own site and on the Geospatial Commons
- **Parcel Opt-In Counties:** Counties that have agreed to include their parcel data in the statewide GAC-standard parcel dataset on the Geospatial Commons
- **Road Centerline, Address Point and Emergency Service Zone Opt-In Counties:** Counties that have agreed to include their (NG911) data in the statewide GAC-standard datasets on the Geospatial Commons as soon as it is available
- **Recently published – 1<sup>st</sup> Generation Road Centerlines and Address Points:** Counties that have agreed to include their road centerline and address points data in the first public statewide GAC-standard road centerline and address points datasets on the Geospatial Commons



# Status of Free and Open Data Public Geospatial Data

Status	Number of Counties	Total
Open - Policy	18	55
Open - No Policy	37	
Not Open or Unknown	32	32

Additions since last update: Morrison & Winona



# Statewide Publicly Available Parcel Data

Published quarterly

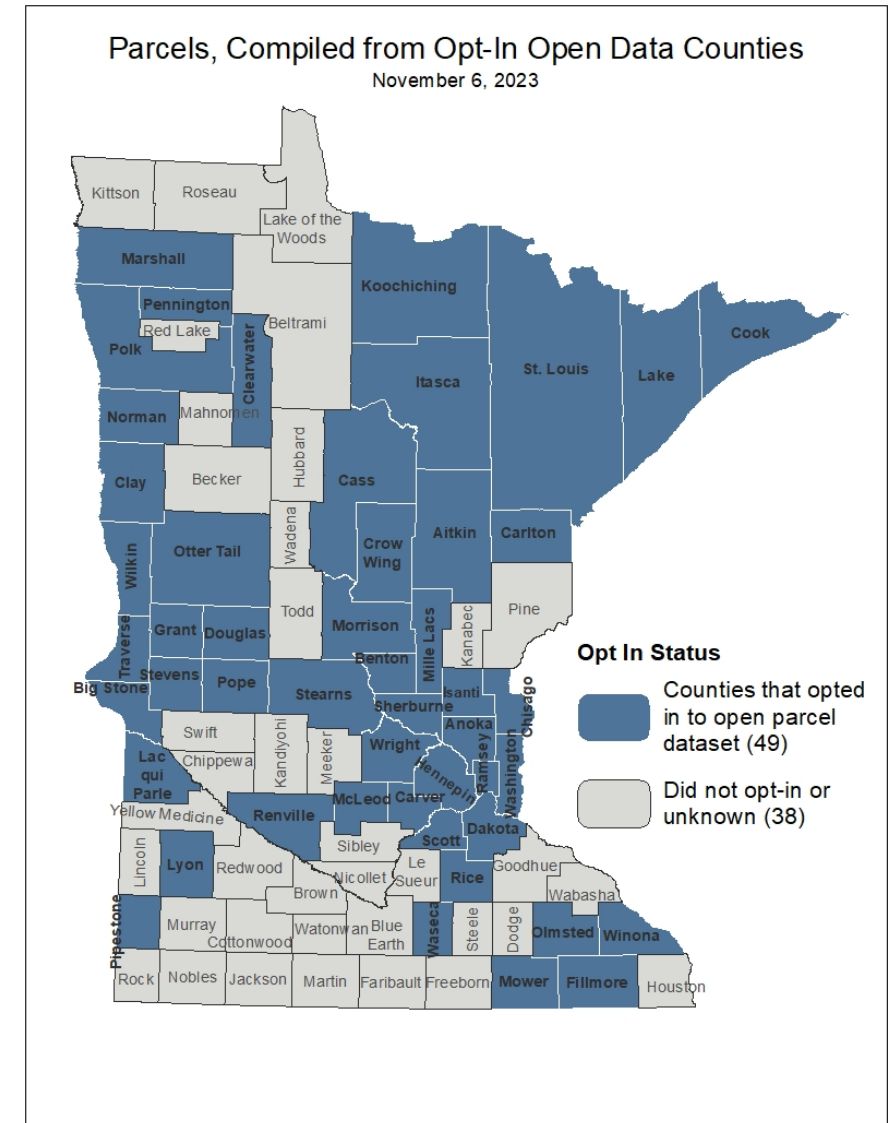
Most recent update, **November 6, 2023**

- New Counties: Cass, Lac qui Parle, McLeod, Morrison, Pipestone

Coming soon:

- Create a secure ArcGIS Online statewide feature layer for internal (government) use

<https://gisdata.mn.gov/dataset/plan-parcels-open>

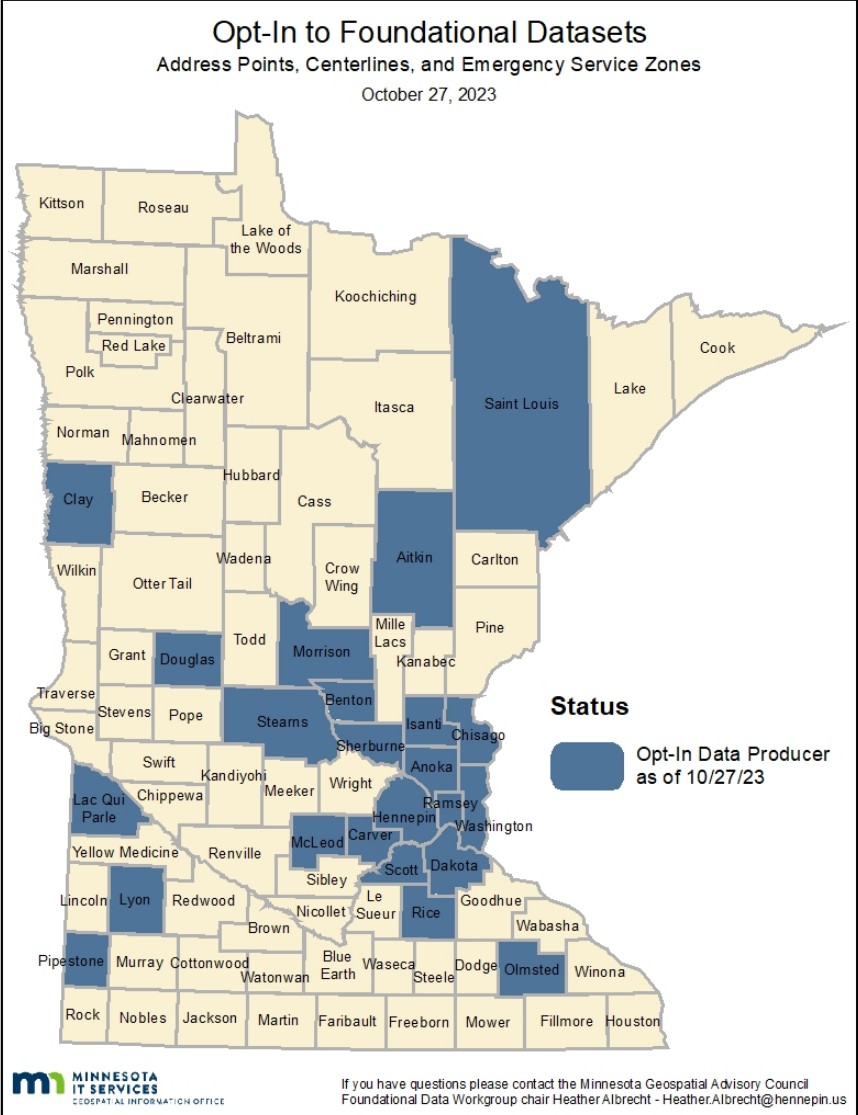




# Road Centerline, Address Points and Emergency Service Zones

## Opt-In to share RCL, ADP and EMZ's

- 21 Counties have opted in!
- Peer to Peer process modeled after PLRC parcel sharing efforts
- Work being done by **Open Data** sub-committee (Outreach Committee)
- Outreach volunteers needed!



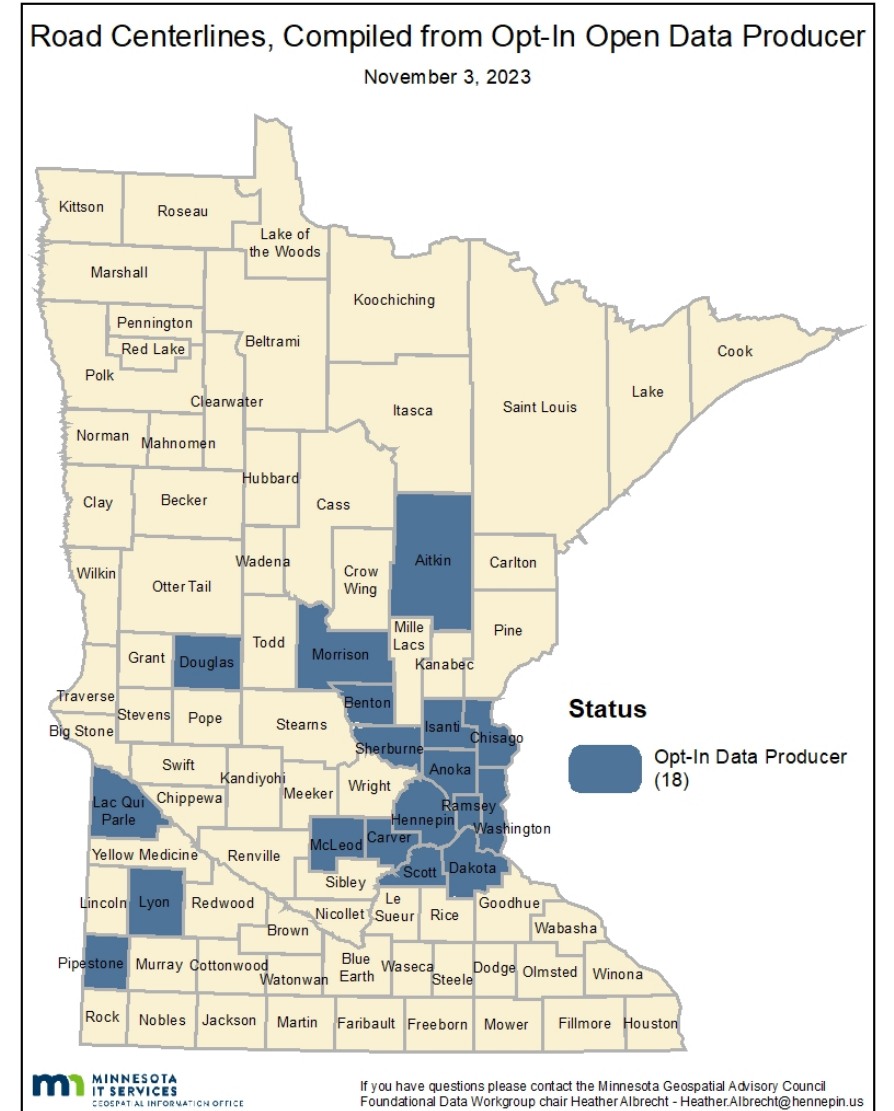
# Road Centerline Dataset Published!

## 1<sup>st</sup> Road Centerline dataset published!

- Compiled from Opt-In Open Data Counties November 30th (soft launch)
- <https://gisdata.mn.gov/dataset/trans-road-centerlines-open>

Coming soon:

- Broadcast announcement for road centerlines



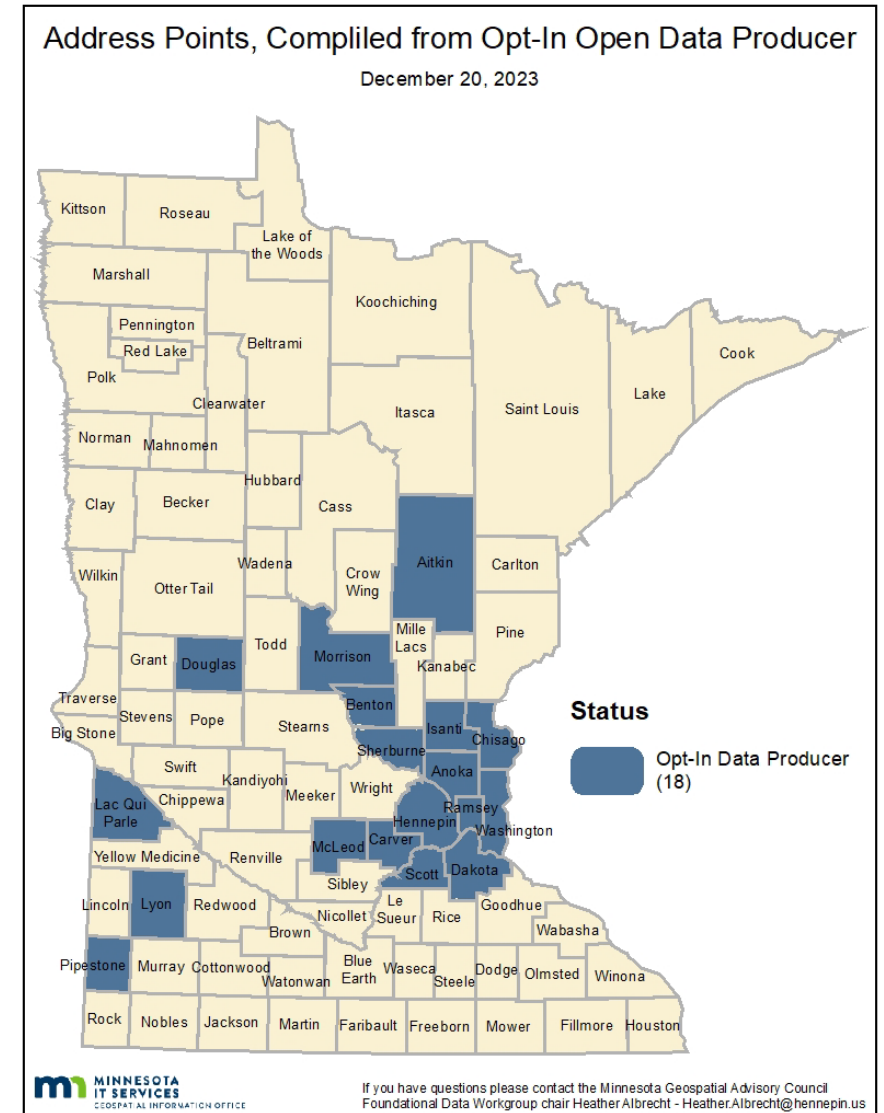
# Address Points Dataset Published!

## 1<sup>st</sup> Address Points dataset published!

- Compiled from Opt-In Open Data Counties December 20, 2023 (soft launch)
- <https://gisdata.mn.gov/dataset/loc-addresses-open>

Coming soon:

- Broadcast announcement for address points

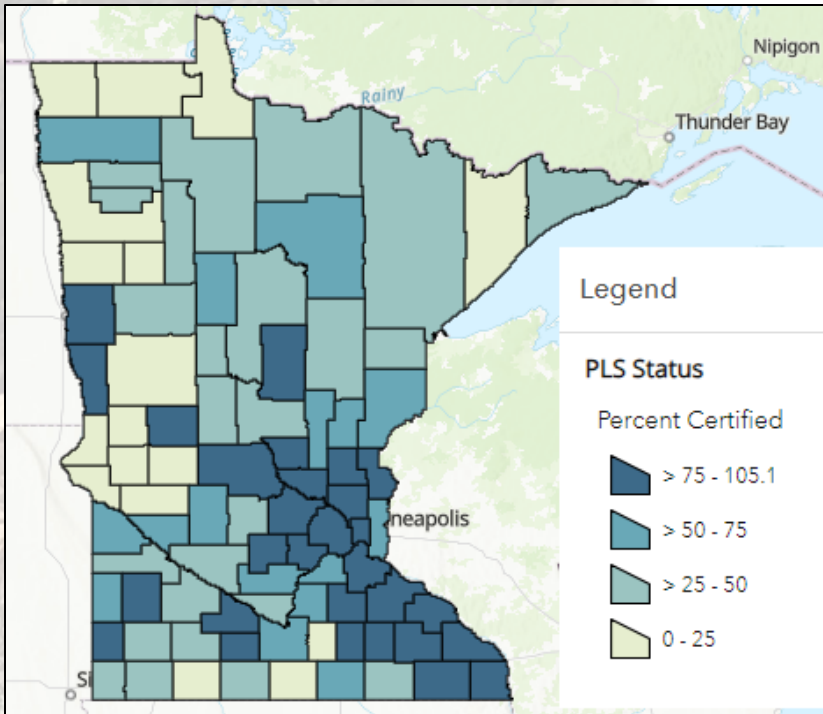


# PLSS Monument Grant Development



- MnGeo Survey Coordinator Onboarded October 25<sup>th</sup>
- Meetings with: Finance, Procurement, OGM, MNIT Legislative Director, General Counsel
- Office of Grants Management (OGM) Training
- Request for Proposal (RFP) converted to new OGM template
- PLSS Preservation Committee has met weekly since Nov. 6<sup>th</sup>
- Developed application exhibits & FAQs
- Grant overview presentation at MSPS Winter Meeting
- Outreach & discussions with counties & land surveyors
- Submitted RFP & application to MNIT General Counsel for review
- Research & review of Grant Management Solutions

# PLSS Monument Grant Next Steps



- Acquire & Develop Grant Management Solution. (6-8 weeks)
- Consider & Incorporate General Counsel comments.
- Outline & Finalize Financial & Procurement Grant Process'
- Outline Pre-award Risk Assessment Process
- Final reviews of RFP and application exhibits
- Implement & test grant management system
- Open application period end of January or beginning of February
- Award & execute first grant award contracts March-April 2024
- PLSS Legislation will be considered in the next legislative session.

# Annual Priority Projects Survey

## Summary of Survey Results

- **Foundational datasets**
  - **Parcels**
  - **Street Centerlines**
  - **Address Points**
- **Publication of open foundational datasets to commercial sources**
- **Lidar Data**
- **Hydro-DEMs**
- **Culvert Data Standard**
- **Re-monumentation of all Section Corners**
- **Updated and Aligned Boundary Data**
- **Underground Utilities Data Sharing Team**
- **...and more**



# Annual Priority Projects Survey

## Next Steps for the GAC

- Complete the preliminary rank and prioritization
- Assign to a Champion, Priority Owner and Committee
- Determine Committee or Workgroup to own Priority
- Present to the GAC in March to finalize list of priorities to focus on in 2024



# Next MN GAC Meeting

**March 20, 2024**

**10 am – Noon, online only**

[Minnesota Geospatial Advisory Council \(state.mn.us\)](https://www.mngeo.state.mn.us/councils/statewide/index.html)

<https://www.mngeo.state.mn.us/councils/statewide/index.html>





# Agenda Item 7

# Food Resources Mapping





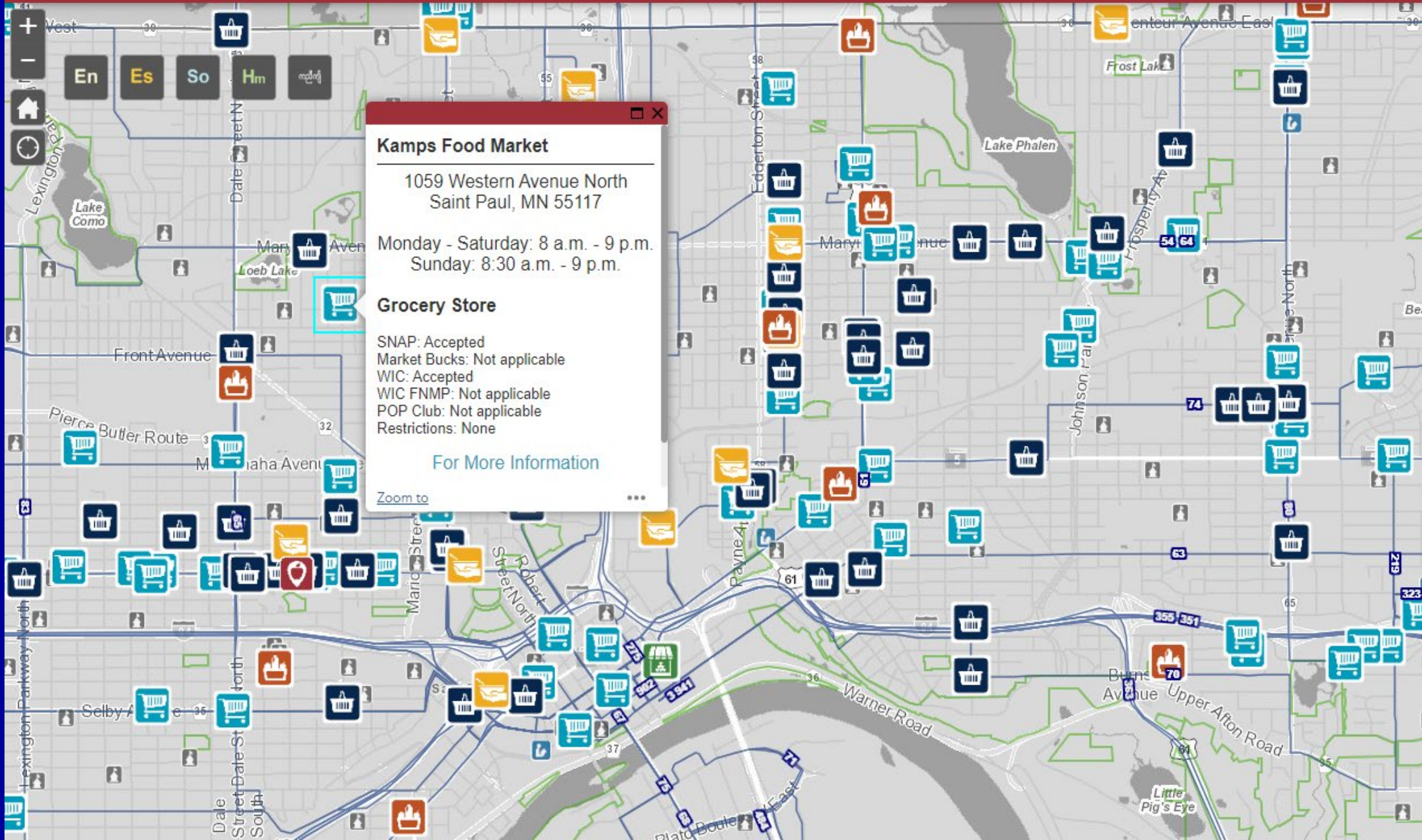
# **Food Resources Mapping**

**Virtual meeting on Tuesday, February 20, 2024**

**Led by Public Health/Food Security/Nutrition from  
Counties around the Metro Region**

**Explore potential for metro-wide food resources  
web mapping application**





**Kamps Food Market**

1059 Western Avenue North  
Saint Paul, MN 55117

Monday - Saturday: 8 a.m. - 9 p.m.  
Sunday: 8:30 a.m. - 9 p.m.

**Grocery Store**

SNAP: Accepted  
Market Bucks: Not applicable  
WIC: Accepted  
WIC FNMP: Not applicable  
POP Club: Not applicable  
Restrictions: None

[For More Information](#)

Zoom to



# Food Resources Mapping

- **Purpose and Need**
- **Data Schema - Must Haves vs. Nice-To-Haves**
- **Data Sources/Data Management**
- **Data Maintenance Responsibilities**
- **Options for a regional web map**





## Agenda Item 8: Lightning Round





**Agenda Item 9: Adjourn**